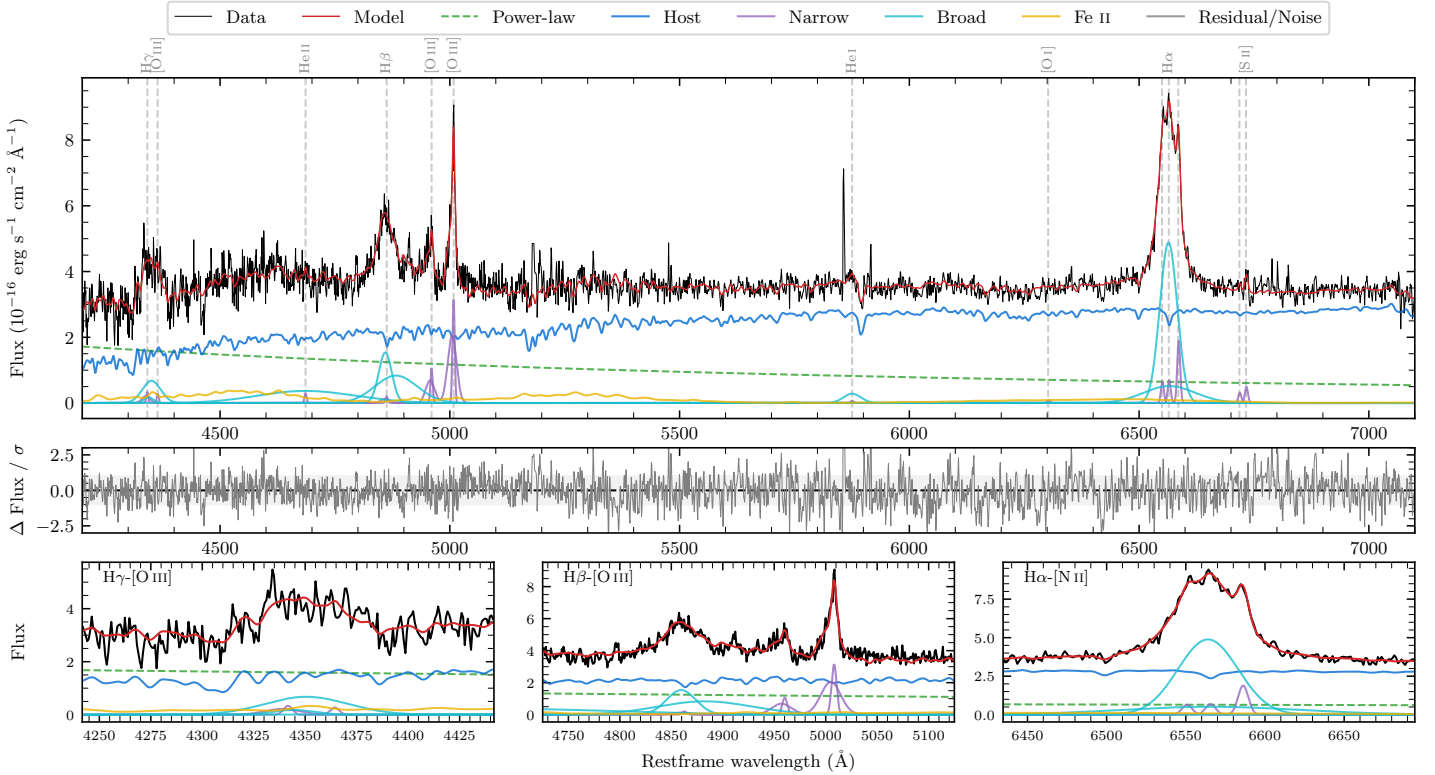
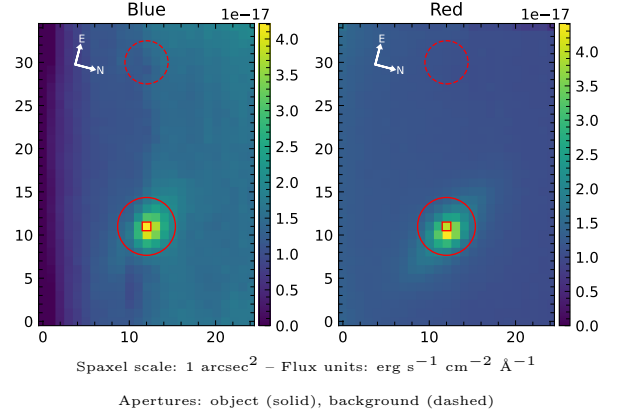


LEDA 971571

Spectrum ID	93335811_sp1	Spectrum type	Sy 1.2
Alt name	g1139285-105760	Quality flag	good
z	0.0758	AGN reference	6dFGS
RA, Dec	174.8685, -10.9666	MW $E(B - V)$	0.025
MJD	59668.62	Power law α_ν	0.20 ± 0.25
SNR/ \AA B/R	9.5/19.5	$\log L_{5100, \text{AGN}}$	42.91 ± 0.06
Obs airmass	1.17	$\log H\beta_{\text{Br}} / [\text{O III}]$	0.34 ± 0.03
SMSS ID	93335811	$\log M_{L5100} / M_\odot$	7.33 ± 0.08
Neighbour	None $< 15''$	$\log M_{\text{H}\alpha} / M_\odot$	6.97 ± 0.03
SMSS $\langle r_6'' \text{ap} \rangle$	17.06 ± 0.05	$\log M_{\text{H}\beta} / M_\odot$	7.44 ± 0.07
2MASS K_{ext}	13.37 ± 0.18	$\log M_{[\text{O III}]} / M_\odot$	7.42 ± 0.07



Emission Line Measurements

Line	$\log L$ (erg s^{-1})	FWHM (km s^{-1})	σ (km s^{-1})	EW (\AA)
H γ Narrow	39.98 ± 0.27	505 ± 73	501 ± 29	4.29 ± 1.40
Hγ Broad	40.78 ± 0.08	2867 ± 355	1100 ± 69	25.89 ± 2.24
[O III] 4364	39.34 ± 0.41	347 ± 64	146 ± 26	0.98 ± 0.70
He II Narrow	39.41 ± 0.33	347 ± 64	146 ± 26	1.37 ± 0.71
He II Broad	41.17 ± 0.05	15864 ± 76	6737 ± 31	77.87 ± 5.49
H β Narrow	39.81 ± 0.38	505 ± 73	501 ± 29	3.71 ± 1.52
Hβ Broad	41.36 ± 0.02	2808 ± 216	1801 ± 61	131.42 ± 3.65
[O III] 5007	41.02 ± 0.02	505 ± 73	502 ± 29	63.55 ± 1.79
He I Narrow	38.89 ± 0.44	347 ± 64	146 ± 26	0.67 ± 0.56
He I Broad	40.31 ± 0.07	2278 ± 93	967 ± 39	17.72 ± 1.64
[O I] 6300	39.00 ± 0.36	347 ± 64	146 ± 26	1.01 ± 0.64
H α Narrow	39.92 ± 0.09	347 ± 64	146 ± 26	9.32 ± 0.86
Hα Broad	41.66 ± 0.01	2170 ± 66	957 ± 32	508.82 ± 3.77
[N II] 6585	40.36 ± 0.03	347 ± 64	146 ± 26	25.81 ± 0.87
[S II] 6718	39.59 ± 0.14	347 ± 64	146 ± 26	4.59 ± 0.97
[S II] 6732	39.79 ± 0.12	347 ± 64	146 ± 26	7.23 ± 1.11

Emission Summary

H α broad SNR	14.85
H β broad SNR	6.26
H γ broad SNR	2.46
AGN frac	0.35
Host frac	0.65
$\log L_{5100, \text{Host}}$	43.18
Fe II/H β	0.63
Fe II/[O III]	1.38

Quality Flags

spurious_hab/hbb	0/0
15100	1
balmer	0
balmer_snr	1
hb_width	1
balmer_width	0