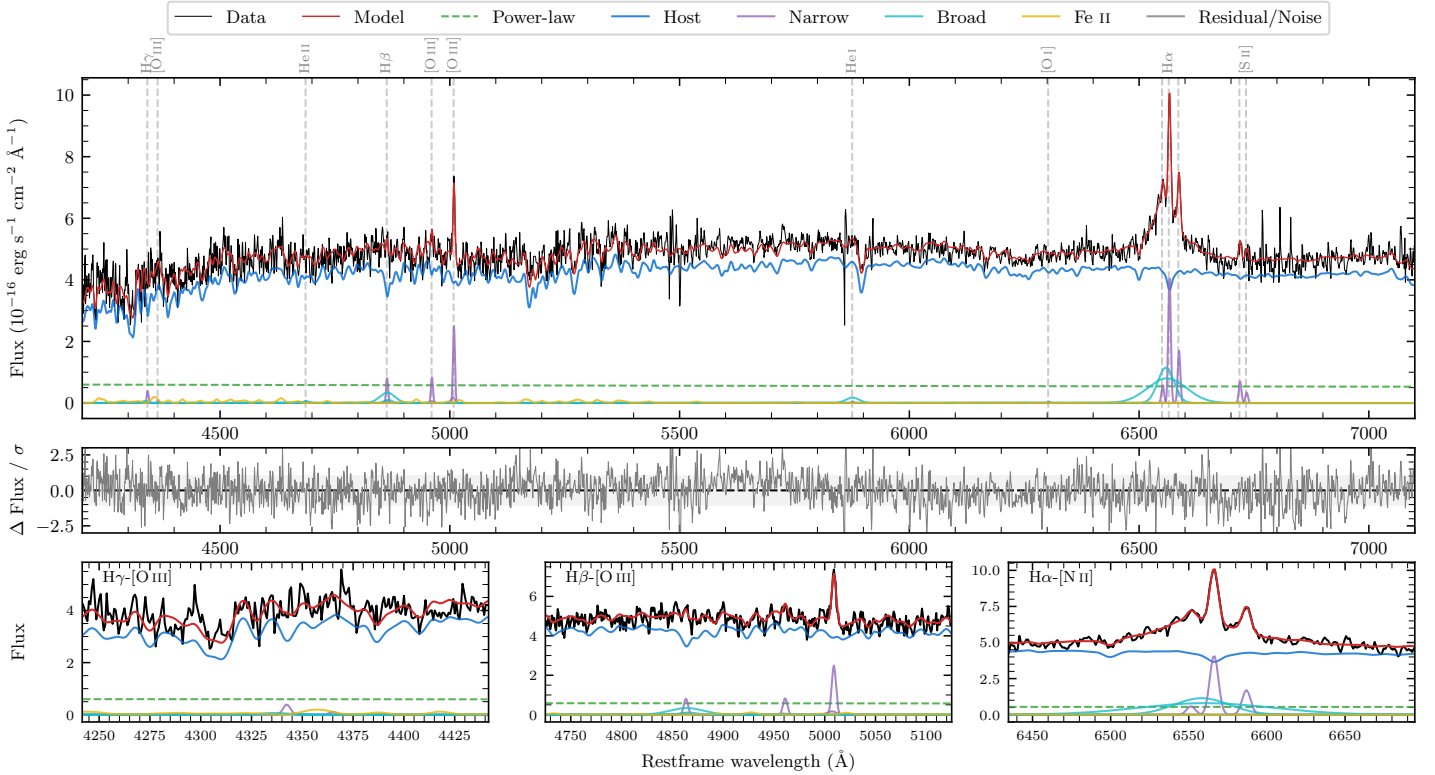
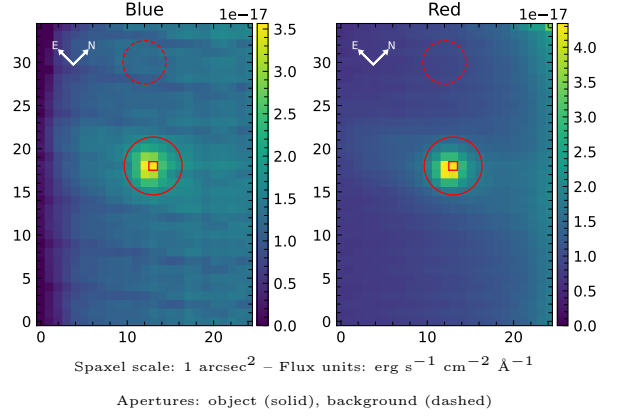


LEDA 969161

Spectrum ID	93149907_sp1	Spectrum type	Sy 1.5
Alt name	g1129212-111005	Quality flag	good
z	0.0754	AGN reference	6dFGS
RA, Dec	172.3382, -11.1680	MW $E(B - V)$	0.036
MJD	60383.57	Power law α_ν	-1.77 ± 0.17
SNR/ \AA B/R	14.3/21.3	$\log L_{5100, \text{AGN}}$	42.61 ± 0.08
Obs airmass	1.07	$\log H\beta_{\text{Br}}/[\text{O III}]$	0.04 ± 0.11
SMSS ID	93149907	$\log M_{L5100}/M_\odot$	6.92 ± 0.13
Neighbour	None $< 15''$	$\log M_{H\alpha}/M_\odot$	6.89 ± 0.05
SMSS $\langle r_6 \rangle_{\text{ap}}$	17.20 ± 0.12	$\log M_{H\beta}/M_\odot$	6.73 ± 0.14
2MASS K_{ext}	12.62 ± 0.13	$\log M_{[\text{O III}]} / M_\odot$	6.81 ± 0.13



Emission Line Measurements

Line	$\log L$ (erg s ⁻¹)	FWHM (km s ⁻¹)	σ (km s ⁻¹)	EW (Å)
H γ Narrow	39.50 ± 0.29	308 ± 63	157 ± 34	3.68 ± 2.08
Hγ Broad	—	—	—	—
[O III] 4364	—	—	—	—
He II Narrow	—	—	—	—
He II Broad	—	—	—	—
H β Narrow	39.87 ± 0.14	308 ± 63	157 ± 34	8.88 ± 1.71
Hβ Broad	40.40 ± 0.11	2026 ± 292	817 ± 46	30.22 ± 3.68
[O III] 5007	40.36 ± 0.04	308 ± 63	157 ± 34	28.22 ± 1.83
He I Narrow	—	—	—	—
He I Broad	39.98 ± 0.17	1738 ± 63	738 ± 25	12.31 ± 2.82
[O I] 6300	—	—	—	—
H α Narrow	40.63 ± 0.02	298 ± 63	126 ± 25	56.53 ± 1.19
Hα Broad	41.31 ± 0.02	2543 ± 120	1242 ± 37	270.31 ± 4.76
[N II] 6585	40.25 ± 0.04	298 ± 63	126 ± 25	23.53 ± 1.14
[S II] 6718	39.87 ± 0.09	298 ± 63	126 ± 25	9.99 ± 1.17
[S II] 6732	39.56 ± 0.25	298 ± 63	126 ± 25	4.84 ± 1.49

Emission Summary

H α broad SNR	5.76
H β broad SNR	1.44
H γ broad SNR	0.44
AGN frac	0.12
Host frac	0.88
$\log L_{5100, \text{Host}}$	43.46
Fe II/H β	1.14
Fe II/[O III]	1.23

Quality Flags

spurious_hab/hbb	0/0
15100	2
balmer	1
balmer_snr	2
hb_width	0
balmer_width	2