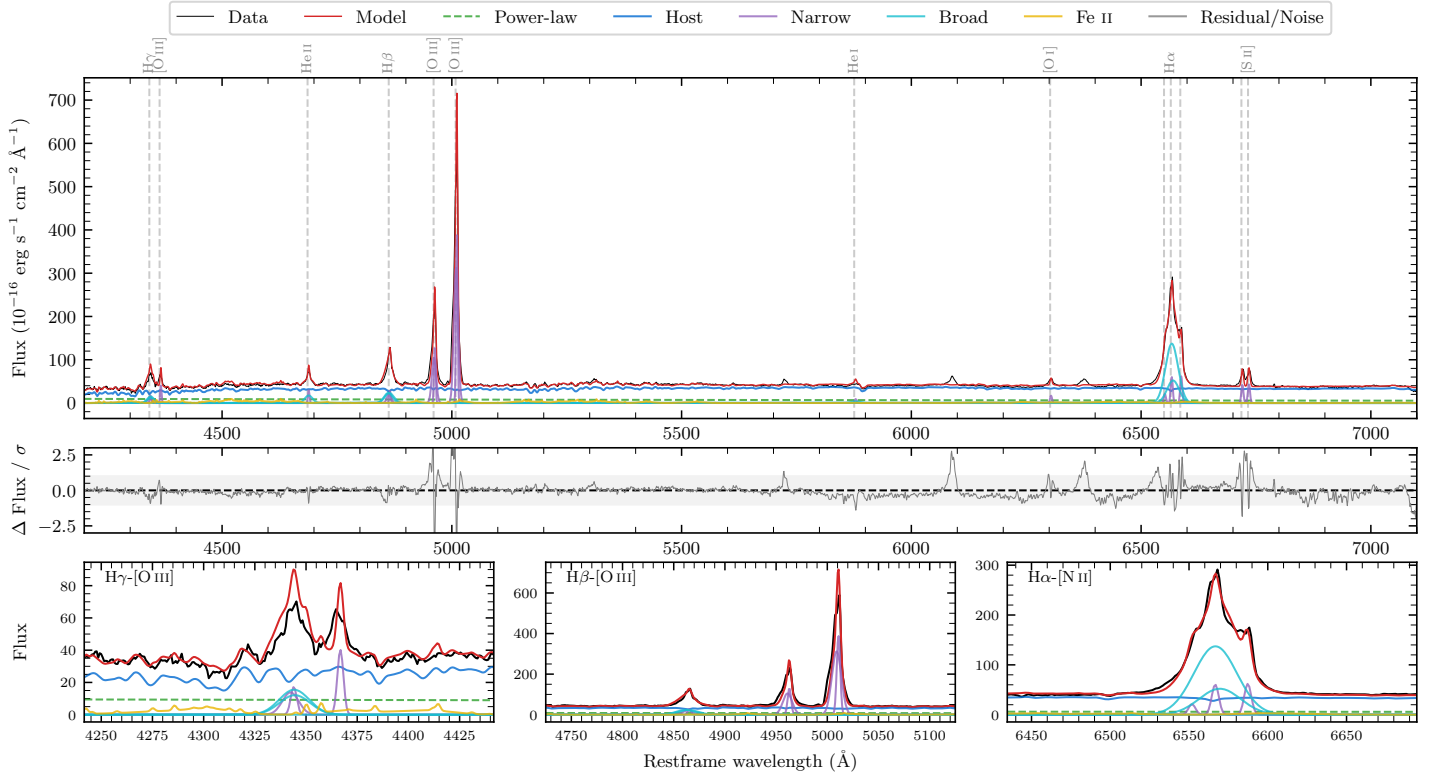
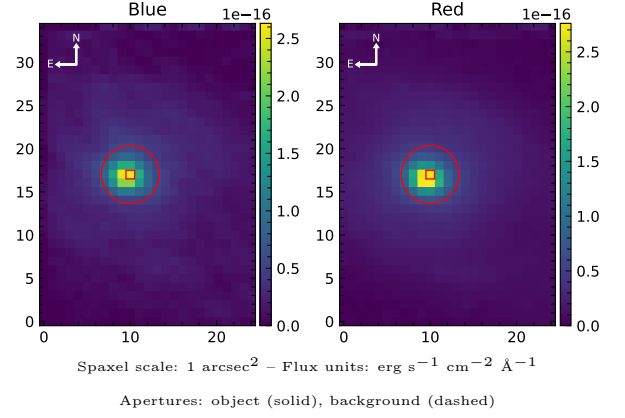


3XMM J011127.5–380500

Spectrum ID	9264736_sp1	Spectrum type	Sy 1.8
Alt name	NGC424	Quality flag	good
z	0.0120	AGN reference	S7
RA, Dec	17.8646, -38.0835	MW $E(B - V)$	0.013
MJD	60650.59	Power law α_ν	-0.91 ± 0.47
SNR/ \AA B/R	3.2/6.1	$\log L_{5100, \text{AGN}}$	42.09 ± 0.19
Obs airmass	1.53	$\log H\beta_{\text{Br}}/[\text{O III}]$	-0.65 ± 0.13
SMSS ID	9264736	$\log M_{L5100}/M_\odot$	6.38 ± 0.10
Neighbour	6.3", 2015330919	$\log M_{\text{H}\alpha}/M_\odot$	6.42 ± 0.06
SMSS $\langle r_6''_{\text{ap}} \rangle$	14.68 ± 0.07	$\log M_{\text{H}\beta}/M_\odot$	6.48 ± 0.08
2MASS K_{ext}	9.13 ± 0.02	$\log M_{[\text{O III}]} / M_\odot$	6.91 ± 0.06



Emission Line Measurements

Line	$\log L$ (erg s^{-1})	FWHM (km s^{-1})	σ (km s^{-1})	EW (\AA)
H γ Narrow	39.76 ± 0.29	368 ± 151	248 ± 76	22.25 ± 6.62
Hγ Broad	40.25 ± 0.18	1201 ± 65	422 ± 25	56.16 ± 8.75
[O III] 4364	39.67 ± 0.24	243 ± 125	102 ± 53	16.56 ± 3.96
He II Narrow	39.55 ± 0.25	243 ± 125	102 ± 53	14.16 ± 3.29
He II Broad	40.06 ± 0.16	1247 ± 84	529 ± 35	43.43 ± 7.18
H β Narrow	39.98 ± 0.24	368 ± 151	248 ± 76	45.13 ± 6.02
Hβ Broad	40.57 ± 0.10	1402 ± 71	523 ± 34	136.83 ± 8.23
[O III] 5007	41.22 ± 0.08	368 ± 151	248 ± 76	677.89 ± 8.61
He I Narrow	39.16 ± 0.30	243 ± 125	102 ± 53	7.17 ± 2.86
He I Broad	39.50 ± 0.31	1238 ± 85	525 ± 35	15.24 ± 6.23
[O I] 6300	39.48 ± 0.22	243 ± 125	102 ± 53	15.12 ± 2.80
H α Narrow	39.99 ± 0.29	243 ± 125	102 ± 53	58.33 ± 5.24
Hα Broad	41.32 ± 0.02	1465 ± 80	542 ± 29	1107.79 ± 9.12
[N II] 6585	40.05 ± 0.19	243 ± 125	102 ± 53	60.11 ± 4.26
[S II] 6718	39.91 ± 0.19	243 ± 125	102 ± 53	42.48 ± 2.95
[S II] 6732	39.88 ± 0.20	243 ± 125	102 ± 53	43.73 ± 2.92

Emission Summary

H α broad SNR	14.10
H β broad SNR	3.54
H γ broad SNR	2.19
AGN frac	0.20
Host frac	0.80
$\log L_{5100, \text{Host}}$	42.69
Fe II/H β	1.13
Fe II/[O III]	0.24

Quality Flags

spurious_hab/hbb	0/0
15100	2
balmer	0
balmer_snr	1
hb_width	0
balmer_width	1