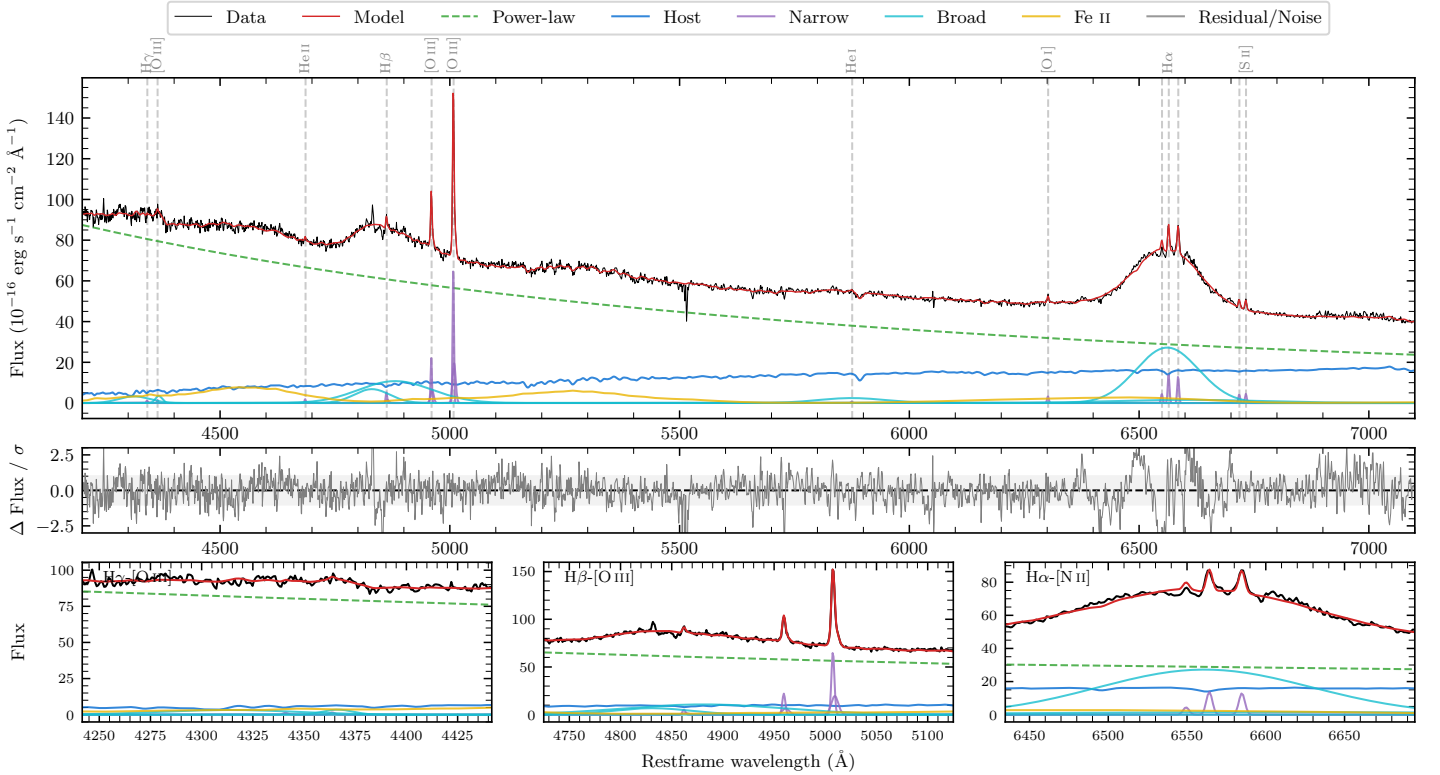
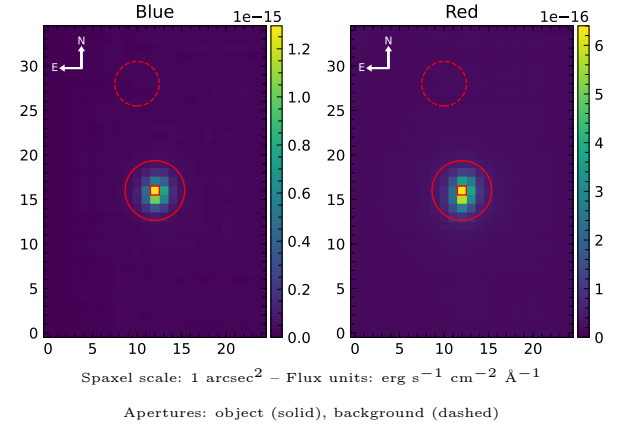


Z 9-7

Spectrum ID	92589160_sp1	Spectrum type	Sy 1.0
Alt name	g1021402-032714	Quality flag	good
z	0.0407	AGN reference	6dFGS
RA, Dec	155.4177, -3.4538	MW $E(B-V)$	0.039
MJD	60059.42	Power law α_ν	0.49 ± 0.01
SNR/ \AA B/R	48.0/51.1	$\log L_{5100, \text{AGN}}$	44.03 ± 0.01
Obs airmass	1.13	$\log H\beta_{\text{Br}}/[\text{O III}]$	0.84 ± 0.01
SMSS ID	92589160	$\log M_{L5100}/M_\odot$	8.91 ± 0.02
Neighbour	9.1", 2151855939	$\log M_{\text{H}\alpha}/M_\odot$	8.46 ± 0.02
SMSS $\langle r_6'' \text{ap} \rangle$	14.74 ± 0.20	$\log M_{\text{H}\beta}/M_\odot$	8.85 ± 0.02
2MASS K_{ext}	11.43 ± 0.08	$\log M_{[\text{O III}]} / M_\odot$	8.61 ± 0.02



Emission Line Measurements

Line	$\log L$ (erg s ⁻¹)	FWHM (km s ⁻¹)	σ (km s ⁻¹)	EW (Å)
H γ Narrow	39.44 ± 0.34	243 ± 63	156 ± 25	0.09 ± 0.06
Hγ Broad	41.14 ± 0.05	—	2248 ± 33	4.33 ± 0.22
[O III] 4364	39.30 ± 0.40	210 ± 63	87 ± 25	0.06 ± 0.04
He II Narrow	39.43 ± 0.30	210 ± 63	87 ± 25	0.10 ± 0.04
He II Broad	39.62 ± 0.39	1351 ± 63	573 ± 25	0.16 ± 0.11
H β Narrow	40.12 ± 0.08	243 ± 63	156 ± 25	0.55 ± 0.07
Hβ Broad	42.06 ± 0.01	9944 ± 173	3964 ± 28	48.34 ± 0.36
[O III] 5007	41.22 ± 0.01	243 ± 63	156 ± 25	7.52 ± 0.08
He I Narrow	39.08 ± 0.38	210 ± 63	87 ± 25	0.08 ± 0.05
He I Broad	41.26 ± 0.03	8743 ± 63	3713 ± 25	12.20 ± 0.38
[O I] 6300	39.78 ± 0.09	210 ± 63	87 ± 25	0.49 ± 0.06
H α Narrow	40.43 ± 0.03	210 ± 63	87 ± 25	2.38 ± 0.09
Hα Broad	42.33 ± 0.01	7525 ± 71	3014 ± 71	191.00 ± 0.62
[N II] 6585	40.40 ± 0.03	210 ± 63	87 ± 25	2.28 ± 0.08
[S II] 6718	39.92 ± 0.07	210 ± 63	87 ± 25	0.78 ± 0.08
[S II] 6732	39.95 ± 0.07	210 ± 63	87 ± 25	0.85 ± 0.07

Emission Summary

H α broad SNR	18.16
H β broad SNR	10.15
H γ broad SNR	2.81
AGN frac	0.85
Host frac	0.15
$\log L_{5100, \text{Host}}$	43.29
Fe II/H β	0.70
Fe II/[O III]	4.81

Quality Flags

spurious_hab/hbb	0/0
15100	2
balmer	0
balmer_snr	1
hb_width	0
balmer_width	0