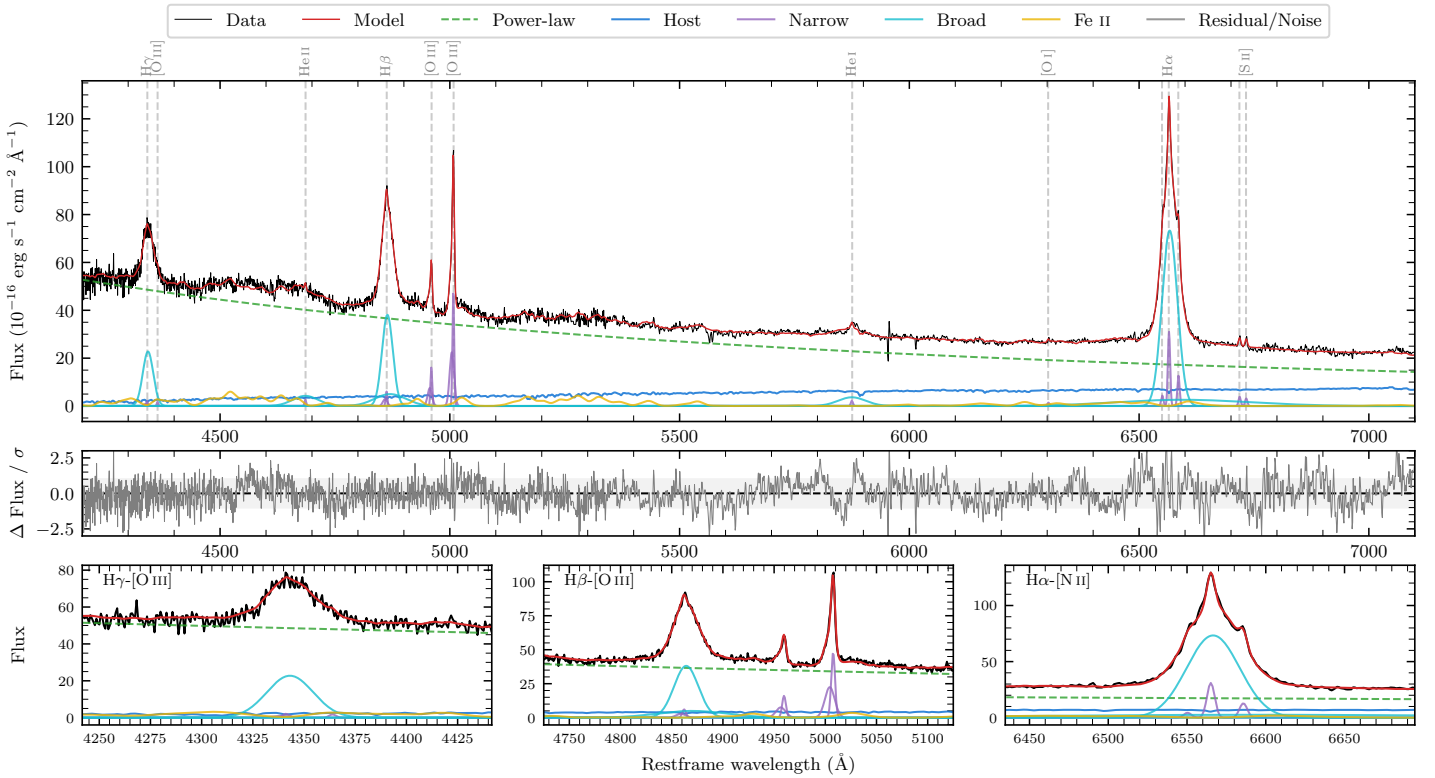
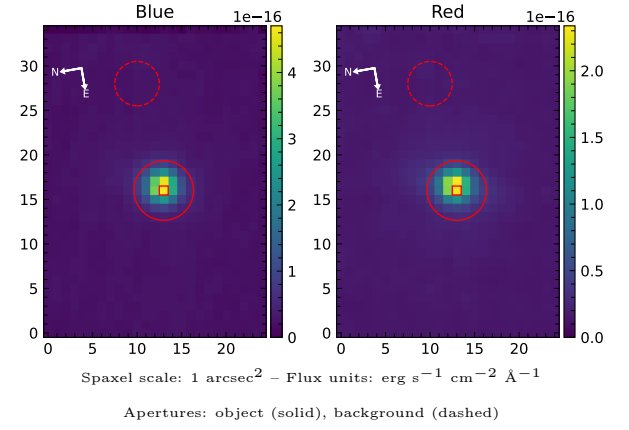


# QSO B1011–040

Spectrum ID	92574481_sp1	Spectrum type	Sy 1.2
Alt name	g1014207–041841	Quality flag	good
$z$	0.0583	AGN reference	6dFGS
RA, Dec	153.5861, –4.3112	MW $E(B - V)$	0.032
MJD	60266.72	Power law $\alpha_\nu$	$0.49 \pm 0.01$
SNR/ $\text{\AA}$ B/R	22.9/29.2	$\log L_{5100, \text{AGN}}$	$44.13 \pm 0.01$
Obs airmass	1.66	$\log H\beta_{\text{Br}}/[\text{O III}]$	$0.49 \pm 0.01$
SMSS ID	92574481	$\log M_{L5100}/M_\odot$	$7.49 \pm 0.02$
Neighbour	None $< 15''$	$\log M_{\text{H}\alpha}/M_\odot$	$7.37 \pm 0.04$
SMSS $\langle r_6''_{\text{ap}} \rangle$	$15.12 \pm 0.03$	$\log M_{\text{H}\beta}/M_\odot$	$7.42 \pm 0.02$
2MASS $K_{\text{ext}}$	$11.70 \pm 0.07$	$\log M_{[\text{O III}]} / M_\odot$	$7.35 \pm 0.02$



## Emission Line Measurements

Line	$\log L$ (erg s <sup>-1</sup> )	FWHM (km s <sup>-1</sup> )	$\sigma$ (km s <sup>-1</sup> )	EW (Å)
H $\gamma$ Narrow	$40.21 \pm 0.30$	$342 \pm 63$	$246 \pm 26$	$0.41 \pm 0.17$
<b>H<math>\gamma</math> Broad</b>	<b><math>41.77 \pm 0.03</math></b>	<b><math>1844 \pm 74</math></b>	<b><math>766 \pm 297</math></b>	<b><math>14.68 \pm 0.78</math></b>
[O III] 4364	$39.80 \pm 0.35$	$267 \pm 63$	$112 \pm 25$	$0.16 \pm 0.10$
He II Narrow	$40.01 \pm 0.22$	$267 \pm 63$	$112 \pm 25$	$0.31 \pm 0.10$
<b>He II Broad</b>	<b><math>41.41 \pm 0.04</math></b>	<b><math>4196 \pm 142</math></b>	<b><math>1782 \pm 60</math></b>	<b><math>7.83 \pm 0.41</math></b>
H $\beta$ Narrow	$40.73 \pm 0.10$	$342 \pm 63$	$246 \pm 26$	$1.77 \pm 0.18$
<b>H<math>\beta</math> Broad</b>	<b><math>42.13 \pm 0.01</math></b>	<b><math>1844 \pm 41</math></b>	<b><math>824 \pm 38</math></b>	<b><math>45.05 \pm 0.46</math></b>
[O III] 5007	$41.63 \pm 0.01$	$342 \pm 63$	$246 \pm 26$	$15.37 \pm 0.19$
He I Narrow	$40.03 \pm 0.12$	$267 \pm 63$	$112 \pm 25$	$0.57 \pm 0.10$
<b>He I Broad</b>	<b><math>41.37 \pm 0.02</math></b>	<b><math>3603 \pm 124</math></b>	<b><math>1530 \pm 52</math></b>	<b><math>12.74 \pm 0.39</math></b>
[O I] 6300	$39.87 \pm 0.15$	$267 \pm 63$	$112 \pm 25$	$0.47 \pm 0.10$
H $\alpha$ Narrow	$41.22 \pm 0.02$	$267 \pm 63$	$112 \pm 25$	$11.62 \pm 0.21$
<b>H<math>\alpha</math> Broad</b>	<b><math>42.54 \pm 0.01</math></b>	<b><math>1852 \pm 63</math></b>	<b><math>1131 \pm 31</math></b>	<b><math>247.79 \pm 1.00</math></b>
[N II] 6585	$40.84 \pm 0.03$	$267 \pm 63$	$112 \pm 25$	$4.87 \pm 0.18$
[S II] 6718	$40.33 \pm 0.06$	$267 \pm 63$	$112 \pm 25$	$1.58 \pm 0.14$
[S II] 6732	$40.24 \pm 0.07$	$267 \pm 63$	$112 \pm 25$	$1.30 \pm 0.13$

## Emission Summary

H $\alpha$ broad SNR	41.04
H $\beta$ broad SNR	23.29
H $\gamma$ broad SNR	12.40
AGN frac	0.89
Host frac	0.11
$\log L_{5100, \text{Host}}$	43.22
Fe II/H $\beta$	0.60
Fe II/[O III]	1.90

## Quality Flags

spurious_hab/hbb	0/0
15100	2
balmer	0
balmer_snr	0
hb_width	0
balmer_width	1