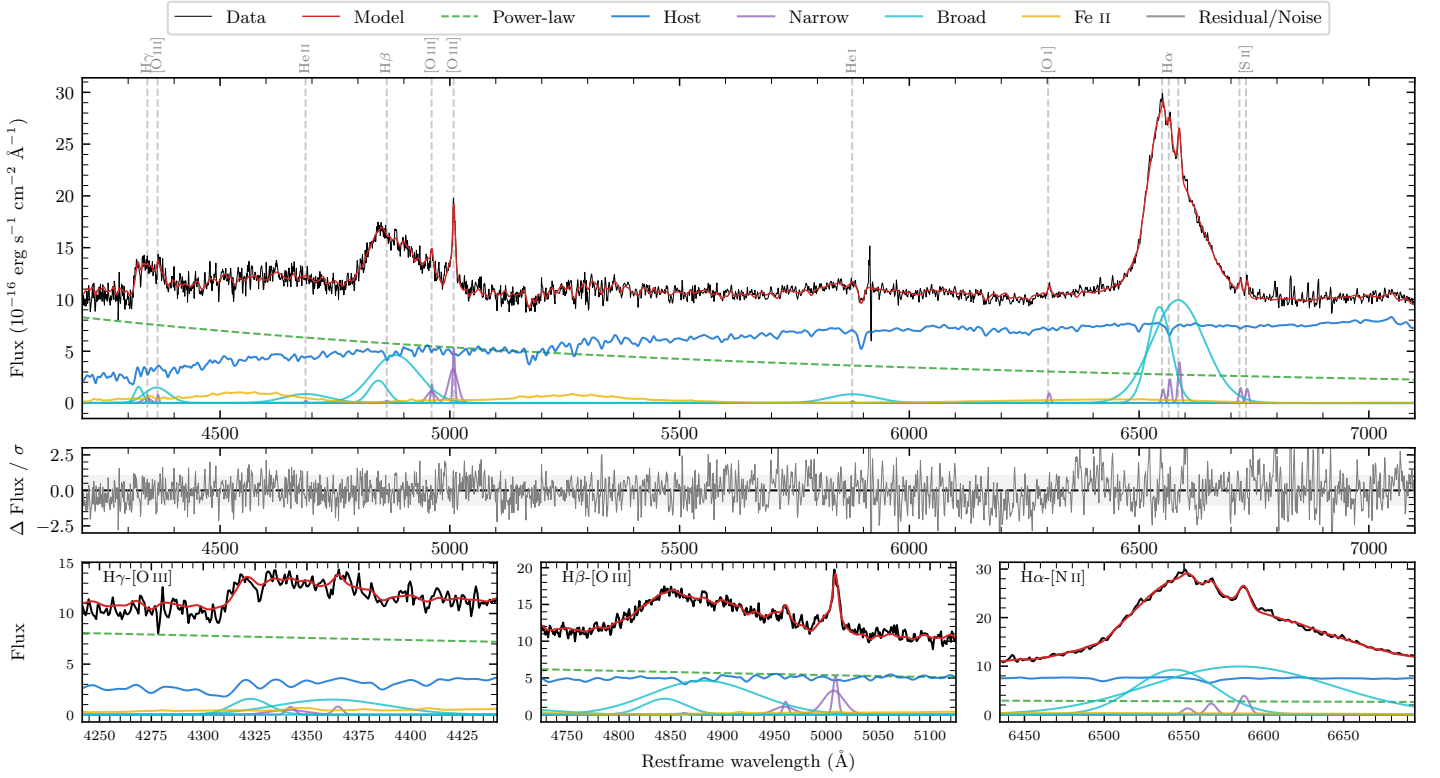
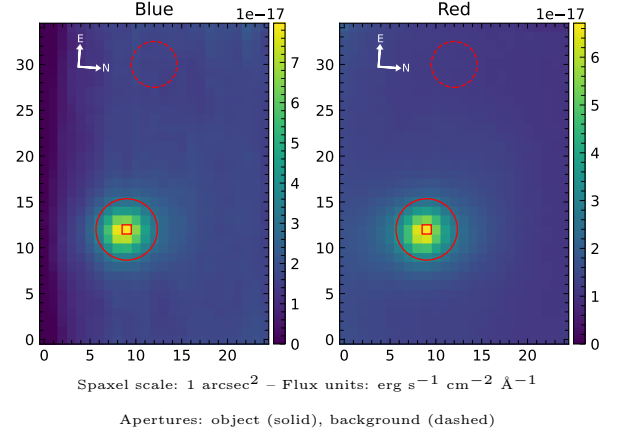


# LEDA 1015385

Spectrum ID	92543972_sp1	Spectrum type	Sy 1.0
Alt name	g1100183-073855	Quality flag	good
$z$	0.0655	AGN reference	6dFGS
RA, Dec	165.0763, -7.6487	MW $E(B - V)$	0.033
MJD	59350.44	Power law $\alpha_\nu$	$0.46 \pm 0.03$
SNR/ $\text{\AA}$ B/R	17.4/34.5	$\log L_{5100, \text{AGN}}$	$43.43 \pm 0.01$
Obs airmass	1.14	$\log H\beta_{\text{Br}}/[\text{O III}]$	$0.79 \pm 0.02$
SMSS ID	92543972	$\log M_{L5100}/M_\odot$	$8.34 \pm 0.02$
Neighbour	None $< 15''$	$\log M_{\text{H}\alpha}/M_\odot$	$8.07 \pm 0.02$
SMSS $\langle r_6''_{\text{ap}} \rangle$	$16.10 \pm 0.08$	$\log M_{\text{H}\beta}/M_\odot$	$8.46 \pm 0.02$
2MASS $K_{\text{ext}}$	$12.58 \pm 0.16$	$\log M_{[\text{O III}]} / M_\odot$	$8.24 \pm 0.03$



## Emission Line Measurements

Line	$\log L$ (erg s <sup>-1</sup> )	FWHM (km s <sup>-1</sup> )	$\sigma$ (km s <sup>-1</sup> )	EW (Å)
H $\gamma$ Narrow	$40.21 \pm 0.16$	$499 \pm 69$	$515 \pm 27$	$2.04 \pm 0.48$
<b>H<math>\gamma</math> Broad</b>	<b><math>41.17 \pm 0.04</math></b>	<b><math>4977 \pm 384</math></b>	<b><math>1778 \pm 30</math></b>	<b><math>19.00 \pm 0.87</math></b>
[O III] 4364	$39.68 \pm 0.28$	$348 \pm 64$	$147 \pm 25$	$0.61 \pm 0.24$
He II Narrow	$39.22 \pm 0.43$	$348 \pm 64$	$147 \pm 25$	$0.25 \pm 0.24$
<b>He II Broad</b>	<b><math>41.07 \pm 0.05</math></b>	<b><math>7323 \pm 112</math></b>	<b><math>3110 \pm 47</math></b>	<b><math>18.04 \pm 1.21</math></b>
H $\beta$ Narrow	$39.74 \pm 0.39$	$499 \pm 69$	$515 \pm 27$	$0.92 \pm 0.54$
<b>H<math>\beta</math> Broad</b>	<b><math>41.89 \pm 0.01</math></b>	<b><math>6930 \pm 156</math></b>	<b><math>2594 \pm 35</math></b>	<b><math>130.81 \pm 1.36</math></b>
[O III] 5007	$41.10 \pm 0.02$	$499 \pm 69$	$515 \pm 27$	$22.82 \pm 0.62$
He I Narrow	$39.16 \pm 0.35$	$348 \pm 64$	$147 \pm 25$	$0.39 \pm 0.23$
<b>He I Broad</b>	<b><math>41.08 \pm 0.03</math></b>	<b><math>6147 \pm 108</math></b>	<b><math>2610 \pm 45</math></b>	<b><math>32.19 \pm 1.10</math></b>
[O I] 6300	$39.91 \pm 0.07$	$348 \pm 64$	$147 \pm 25$	$2.58 \pm 0.28$
H $\alpha$ Narrow	$40.31 \pm 0.05$	$348 \pm 64$	$147 \pm 25$	$7.25 \pm 0.37$
<b>H<math>\alpha</math> Broad</b>	<b><math>42.35 \pm 0.01</math></b>	<b><math>4776 \pm 72</math></b>	<b><math>2042 \pm 25</math></b>	<b><math>783.08 \pm 1.59</math></b>
[N II] 6585	$40.55 \pm 0.03$	$348 \pm 64$	$147 \pm 25$	$12.44 \pm 0.38$
[S II] 6718	$40.13 \pm 0.05$	$348 \pm 64$	$147 \pm 25$	$4.96 \pm 0.35$
[S II] 6732	$40.11 \pm 0.05$	$348 \pm 64$	$147 \pm 25$	$4.78 \pm 0.35$

## Emission Summary

H $\alpha$ broad SNR	27.87
H $\beta$ broad SNR	9.57
H $\gamma$ broad SNR	3.37
AGN frac	0.50
Host frac	0.49
$\log L_{5100, \text{Host}}$	43.42
Fe II/H $\beta$	0.36
Fe II/[O III]	2.20

## Quality Flags

spurious_hab/hbb	0/0
15100	2
balmer	0
balmer_snr	0
hb_width	0
balmer_width	0