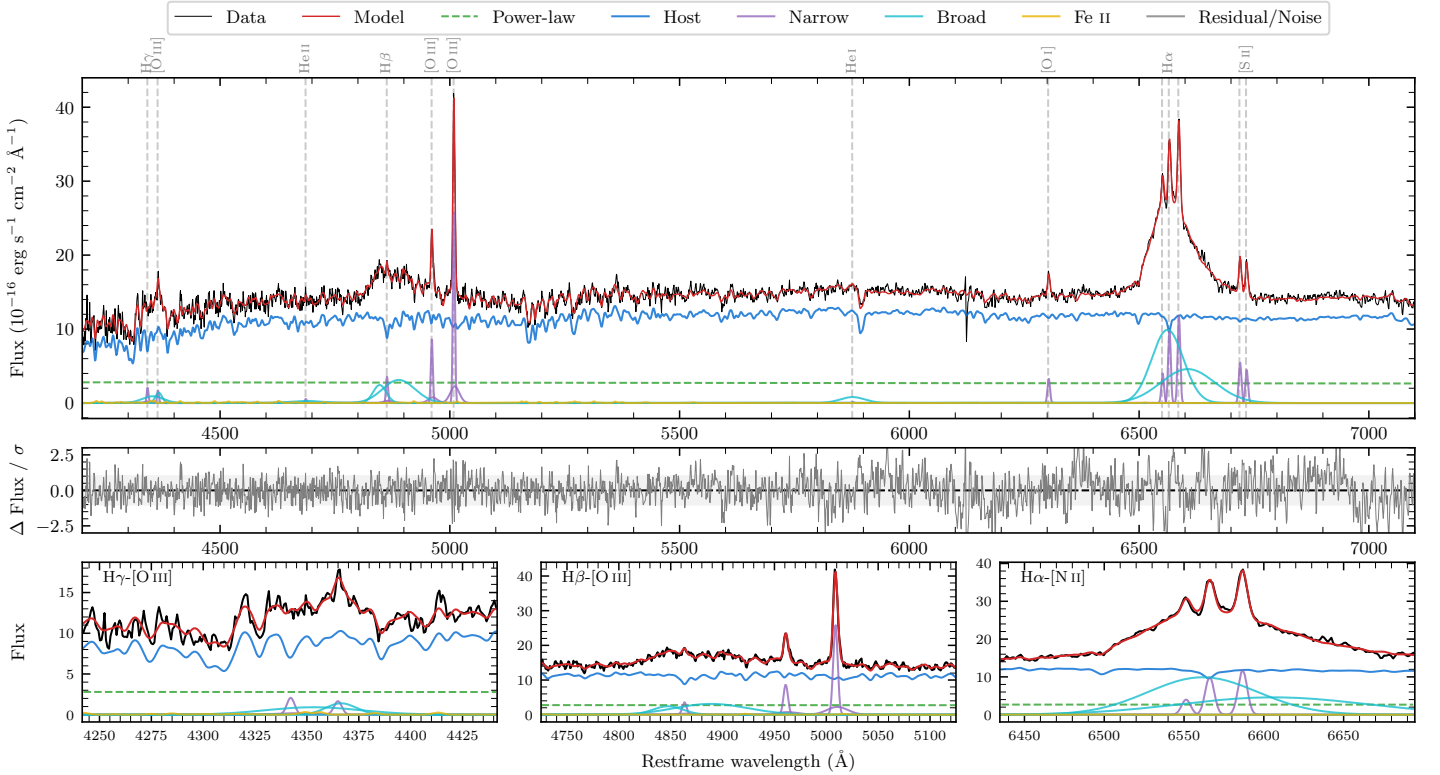
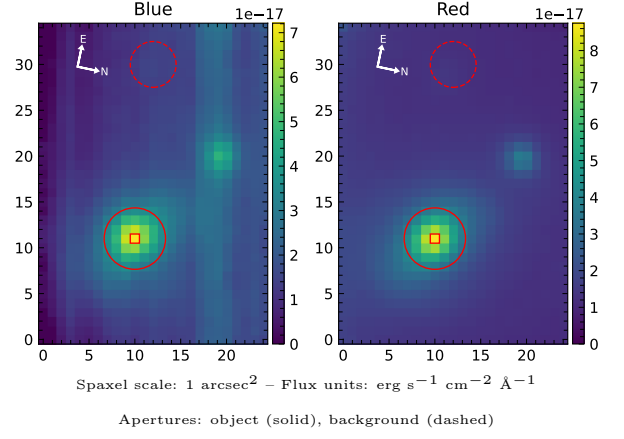


LEDA 155508

Spectrum ID	92349617_sp1	Spectrum type	Sy 1.5
Alt name	g1038209-100660	Quality flag	good
z	0.0290	AGN reference	6dFGS
RA, Dec	159.5869, -10.1168	MW $E(B - V)$	0.034
MJD	59732.39	Power law α_ν	-1.89 ± 0.10
SNR/ \AA B/R	17.4/39.9	$\log L_{5100, \text{AGN}}$	42.43 ± 0.03
Obs airmass	1.15	$\log H\beta_{\text{Br}}/[\text{O III}]$	0.27 ± 0.02
SMSS ID	92349617	$\log M_{L5100}/M_\odot$	7.72 ± 0.04
Neighbour	13.0", 92349616	$\log M_{\text{H}\alpha}/M_\odot$	7.49 ± 0.03
SMSS $\langle r_{6''}^{\text{ap}} \rangle$	15.93 ± 0.06	$\log M_{\text{H}\beta}/M_\odot$	7.81 ± 0.05
2MASS K_{ext}	11.52 ± 0.08	$\log M_{[\text{O III}]} / M_\odot$	7.80 ± 0.05



Emission Line Measurements

Line	$\log L$ (erg s ⁻¹)	FWHM (km s ⁻¹)	σ (km s ⁻¹)	EW (Å)
H γ Narrow	39.43 ± 0.17	324 ± 63	341 ± 29	5.06 ± 1.74
Hγ Broad	40.19 ± 0.09	1726 ± 541	1160 ± 116	28.79 ± 2.90
[O III] 4364	39.19 ± 0.24	305 ± 63	129 ± 25	2.89 ± 0.79
He II Narrow	38.75 ± 0.34	305 ± 63	129 ± 25	1.07 ± 0.64
He II Broad	39.70 ± 0.21	5173 ± 259	2197 ± 109	9.15 ± 2.62
H β Narrow	39.72 ± 0.06	324 ± 63	341 ± 29	9.87 ± 1.33
Hβ Broad	40.85 ± 0.02	5591 ± 185	1898 ± 33	135.50 ± 2.65
[O III] 5007	40.59 ± 0.01	324 ± 63	341 ± 29	73.68 ± 1.34
He I Narrow	–	–	–	–
He I Broad	40.04 ± 0.04	3211 ± 154	1363 ± 65	20.67 ± 1.18
[O I] 6300	39.64 ± 0.03	305 ± 63	129 ± 25	8.60 ± 0.37
H α Narrow	40.15 ± 0.01	305 ± 63	129 ± 25	27.40 ± 0.40
Hα Broad	41.48 ± 0.01	4492 ± 71	1854 ± 25	588.83 ± 1.77
[N II] 6585	40.22 ± 0.01	305 ± 63	129 ± 25	32.31 ± 0.41
[S II] 6718	39.89 ± 0.02	305 ± 63	129 ± 25	15.30 ± 0.41
[S II] 6732	39.81 ± 0.02	305 ± 63	129 ± 25	12.66 ± 0.39

Emission Summary

H α broad SNR	16.82
H β broad SNR	5.09
H γ broad SNR	2.73
AGN frac	0.20
Host frac	0.80
$\log L_{5100, \text{Host}}$	43.02
Fe II/H β	0.07
Fe II/[O III]	0.12

Quality Flags

spurious_hab/hbb	0/0
15100	1
balmer	0
balmer_snr	1
hb_width	0
balmer_width	0