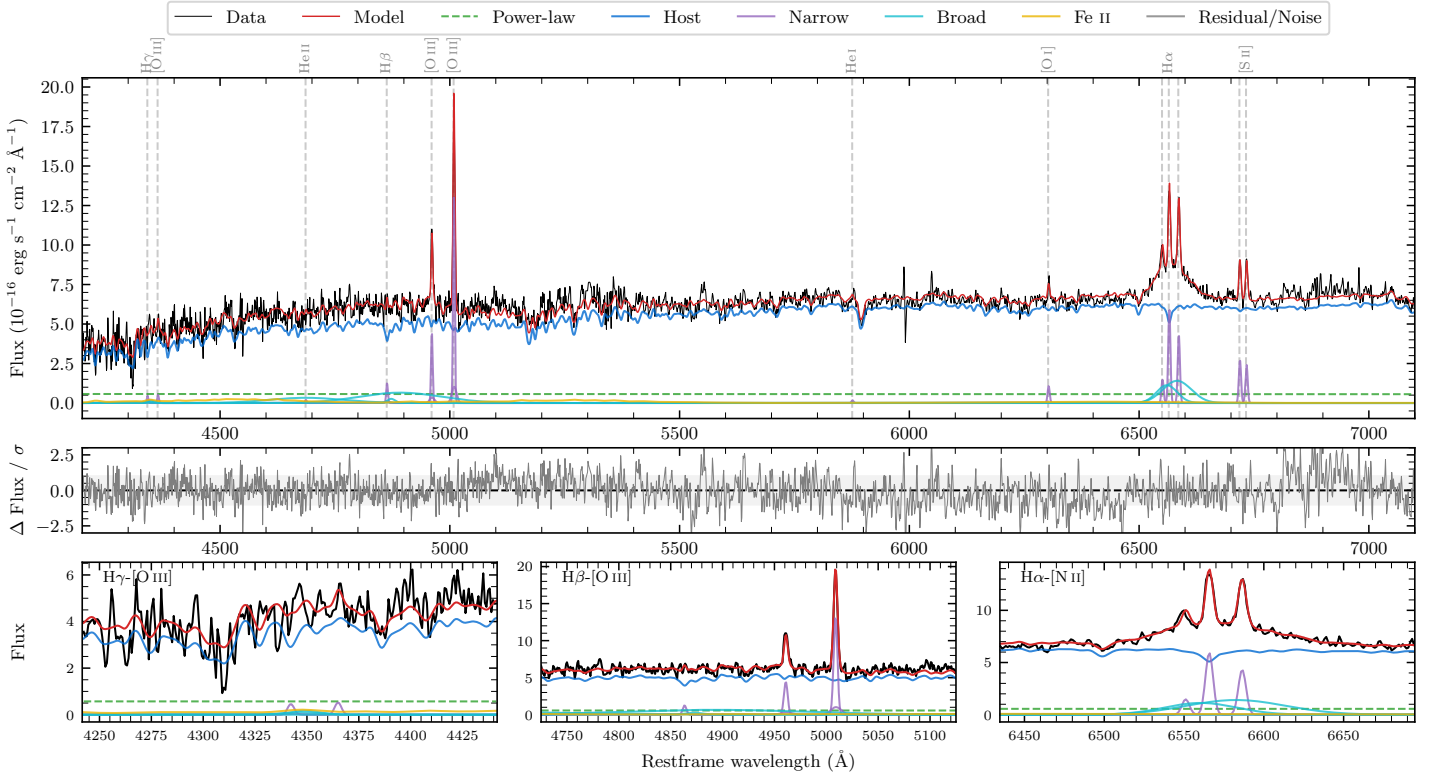
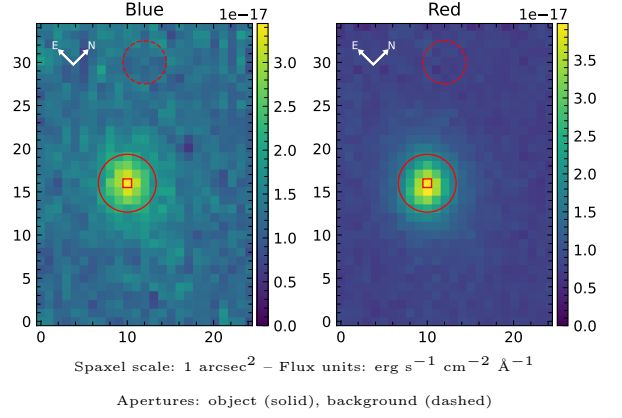


LEDA 968772

Spectrum ID	92169843_sp1	Spectrum type	Sy 1.5+
Alt name	g1037244-111156	Quality flag	good
z	0.0523	AGN reference	6dFGS
RA, Dec	159.3515, -11.1987	MW $E(B-V)$	0.046
MJD	61037.71	Power law α_ν	-1.96 ± 0.04
SNR/ \AA B/R	9.8/22.1	$\log L_{5100, \text{AGN}}$	42.27 ± 0.08
Obs airmass	1.10	$\log H\beta_{\text{Br}}/[\text{O III}]$	< -0.37
SMSS ID	92169843	$\log M_{L5100}/M_\odot$	—
Neighbour	None $< 15''$	$\log M_{H\alpha}/M_\odot$	6.94 ± 0.04
SMSS $\langle r_6'' \text{ ap} \rangle$	16.48 ± 0.02	$\log M_{H\beta}/M_\odot$	—
2MASS K_{ext}	12.72 ± 0.12	$\log M_{[\text{O III}]} / M_\odot$	—



Emission Line Measurements

Line	$\log L$ (erg s ⁻¹)	FWHM (km s ⁻¹)	σ (km s ⁻¹)	EW (Å)
H γ Narrow	39.18 ± 0.40	273 ± 63	162 ± 30	4.08 ± 3.97
Hγ Broad	—	—	—	—
[O III] 4364	39.15 ± 0.37	261 ± 62	109 ± 25	3.87 ± 2.59
He II Narrow	—	—	—	—
He II Broad	—	—	—	—
H β Narrow	39.66 ± 0.14	273 ± 63	162 ± 30	12.55 ± 3.31
Hβ Broad	< 40.33	—	—	—
[O III] 5007	40.70 ± 0.02	273 ± 63	162 ± 30	136.57 ± 3.56
He I Narrow	38.81 ± 0.39	261 ± 62	109 ± 25	1.79 ± 1.19
He I Broad	—	—	—	—
[O I] 6300	39.62 ± 0.08	261 ± 62	109 ± 25	11.49 ± 1.23
H α Narrow	40.38 ± 0.02	261 ± 62	109 ± 25	66.71 ± 1.54
Hα Broad	41.07 ± 0.02	3177 ± 86	1176 ± 25	325.12 ± 5.15
[N II] 6585	40.25 ± 0.03	261 ± 62	109 ± 25	48.66 ± 1.58
[S II] 6718	40.06 ± 0.03	261 ± 62	109 ± 25	31.44 ± 1.32
[S II] 6732	40.01 ± 0.03	261 ± 62	109 ± 25	27.99 ± 1.33

Emission Summary

H α broad SNR	4.05
H β broad SNR	0.46
H γ broad SNR	0.00
AGN frac	0.10
Host frac	0.90
$\log L_{5100, \text{Host}}$	43.21
Fe II/H β	—
Fe II/[O III]	—

Quality Flags

spurious_hab/hbb	0/1
15100	2
balmer	2
balmer_snr	2
hb_width	2
balmer_width	2