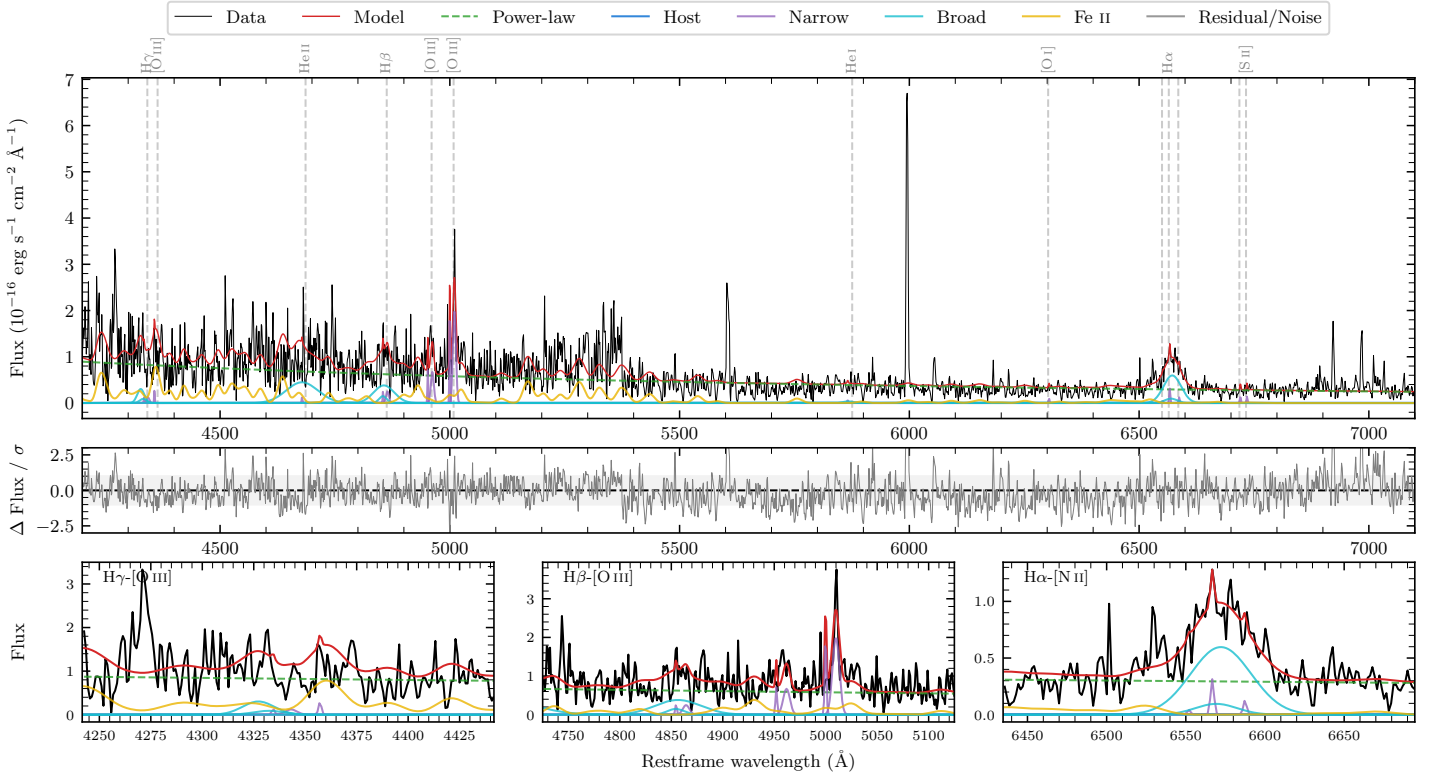
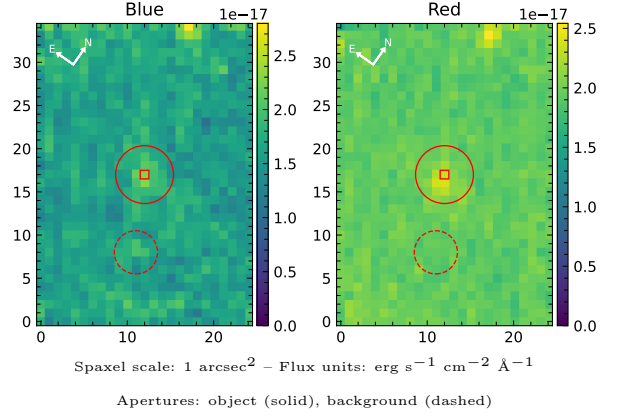


# LEDA 965758

Spectrum ID	92169269_sp1	Spectrum type	Bad
Alt name	g1037038-112625	Quality flag	bad_all
$z$	0.0517	AGN reference	6dFGS
RA, Dec	159.2657, -11.4401	MW $E(B-V)$	0.040
MJD	60079.38	Power law $\alpha_\nu$	$0.49 \pm 0.01$
SNR/ $\text{\AA}$ B/R	1.4/1.9	$\log L_{5100, \text{AGN}}$	$42.25 \pm 0.01$
Obs airmass	1.06	$\log H\beta_{\text{Br}}/[\text{O III}]$	$0.07 \pm 0.14$
SMSS ID	92169269	$\log M_{L5100}/M_\odot$	$6.94 \pm 0.21$
Neighbour	None $< 15''$	$\log M_{\text{H}\alpha}/M_\odot$	$6.06 \pm 0.08$
SMSS $\langle r_6''_{\text{ap}} \rangle$	$16.38 \pm 0.27$	$\log M_{\text{H}\beta}/M_\odot$	$6.82 \pm 0.22$
2MASS $K_{\text{ext}}$	$12.28 \pm 0.07$	$\log M_{[\text{O III}]} / M_\odot$	$6.88 \pm 0.21$



## Emission Line Measurements

Line	$\log L$ (erg s <sup>-1</sup> )	FWHM (km s <sup>-1</sup> )	$\sigma$ (km s <sup>-1</sup> )	EW (Å)
H $\gamma$ Narrow	–	–	–	–
<b>H<math>\gamma</math> Broad</b>	–	–	–	–
[O III] 4364	–	–	–	–
He II Narrow	–	–	–	–
<b>He II Broad</b>	<b><math>40.41 \pm 0.10</math></b>	<b><math>5182 \pm 62</math></b>	<b><math>2200 \pm 25</math></b>	<b><math>59.46 \pm 8.02</math></b>
H $\beta$ Narrow	$39.23 \pm 0.39$	–	$301 \pm 25$	$4.29 \pm 2.30$
<b>H<math>\beta</math> Broad</b>	<b><math>40.22 \pm 0.13</math></b>	<b><math>2484 \pm 599</math></b>	<b><math>1071 \pm 57</math></b>	<b><math>40.95 \pm 6.69</math></b>
[O III] 5007	$40.14 \pm 0.05$	–	$301 \pm 25$	$38.20 \pm 2.63$
He I Narrow	–	–	–	–
<b>He I Broad</b>	<b><math>38.80 \pm 0.50</math></b>	<b><math>1234 \pm 62</math></b>	<b><math>523 \pm 25</math></b>	<b><math>2.57 \pm 2.13</math></b>
[O I] 6300	$38.23 \pm 0.48$	$124 \pm 62$	$50 \pm 25$	$0.82 \pm 0.70$
H $\alpha$ Narrow	$38.76 \pm 0.24$	$124 \pm 62$	$50 \pm 25$	$3.09 \pm 0.89$
<b>H<math>\alpha</math> Broad</b>	<b><math>40.32 \pm 0.03</math></b>	<b><math>1949 \pm 104</math></b>	<b><math>710 \pm 26</math></b>	<b><math>113.65 \pm 4.45</math></b>
[N II] 6585	$38.36 \pm 0.46$	$124 \pm 62$	$50 \pm 25$	$1.25 \pm 0.97$
[S II] 6718	$38.44 \pm 0.36$	$124 \pm 62$	$50 \pm 25$	$1.58 \pm 0.78$
[S II] 6732	$38.41 \pm 0.41$	$124 \pm 62$	$50 \pm 25$	$1.49 \pm 0.93$

## Emission Summary

H $\alpha$ broad SNR	1.60
H $\beta$ broad SNR	1.28
H $\gamma$ broad SNR	0.99
AGN frac	0.99
Host frac	0.00
$\log L_{5100, \text{Host}}$	39.74
Fe II/H $\beta$	3.67
Fe II/[O III]	4.24

## Quality Flags

spurious_hab/hbb	0/0
15100	2
balmer	1
balmer_snr	2
hb_width	0
balmer_width	0