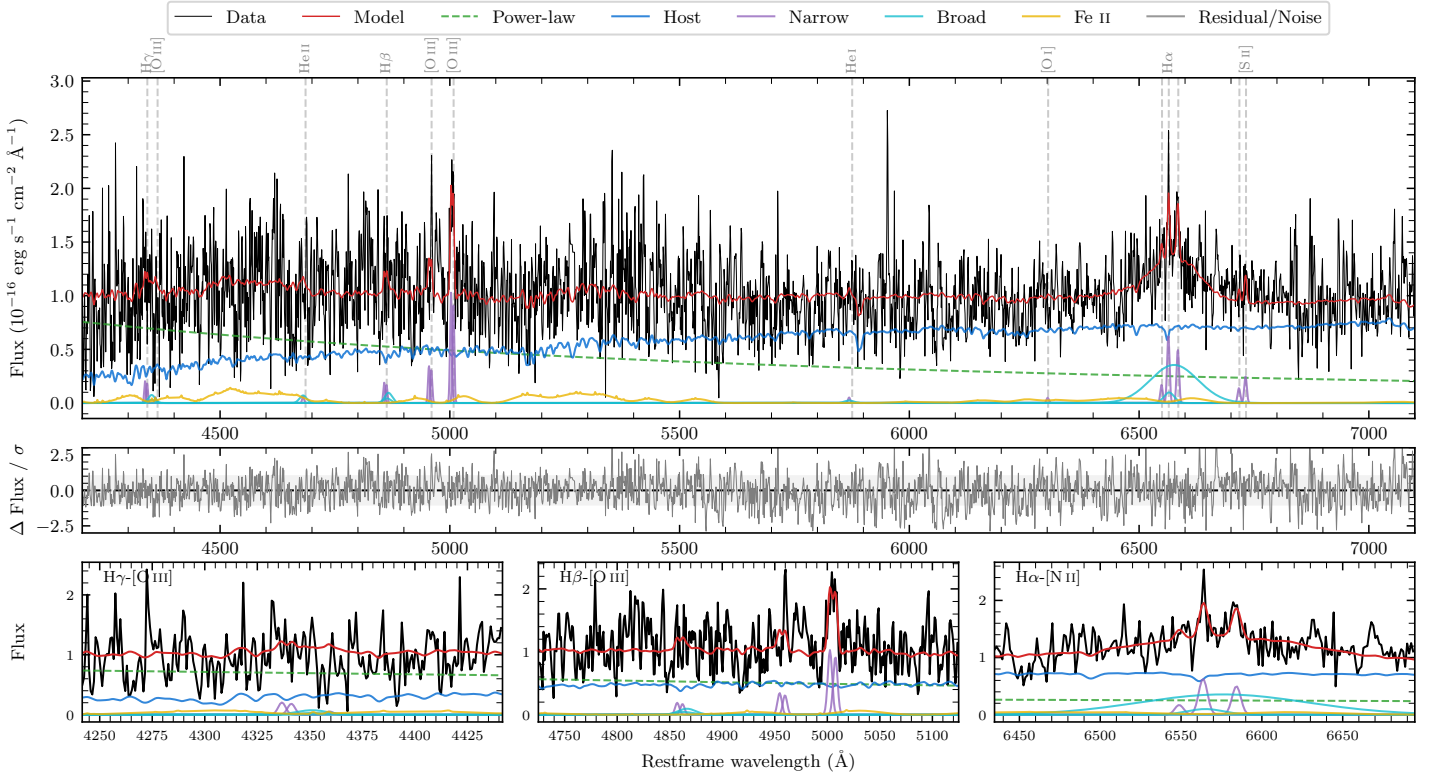
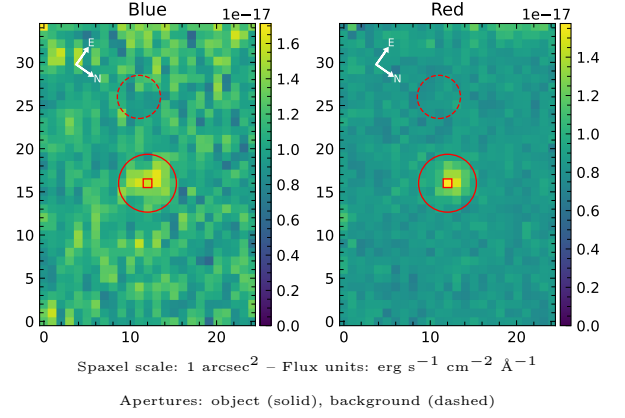


# LEDA 584901

Spectrum ID	9205743_sp1	Spectrum type	Bad
Alt name	g0143185-403416	Quality flag	bad_all
$z$	0.0588	AGN reference	6dFGS
RA, Dec	25.8272, -40.5712	MW $E(B-V)$	0.012
MJD	60944.64	Power law $\alpha_\nu$	$0.48 \pm 0.02$
SNR/ $\text{\AA}$ B/R	2.5/4.3	$\log L_{5100, \text{AGN}}$	$42.30 \pm 0.06$
Obs airmass	1.01	$\log H\beta_{\text{Br}}/[\text{O III}]$	—
SMSS ID	9205743	$\log M_{L5100}/M_\odot$	—
Neighbour	5.5", 1012850116	$\log M_{\text{H}\alpha}/M_\odot$	$6.99 \pm 0.16$
SMSS $\langle r_6^{\text{ap}} \rangle$	$16.53 \pm 0.05$	$\log M_{\text{H}\beta}/M_\odot$	—
2MASS $K_{\text{ext}}$	$12.91 \pm 0.11$	$\log M_{[\text{O III}]} / M_\odot$	—



## Emission Line Measurements

Line	$\log L$ ( $\text{erg s}^{-1}$ )	FWHM ( $\text{km s}^{-1}$ )	$\sigma$ ( $\text{km s}^{-1}$ )	EW ( $\text{\AA}$ )
H $\gamma$ Narrow	$39.18 \pm 0.35$	$583 \pm 63$	$198 \pm 25$	$2.63 \pm 1.68$
<b>H<math>\gamma</math> Broad</b>	—	—	—	—
[O III] 4364	—	—	—	—
He II Narrow	—	—	—	—
<b>He II Broad</b>	—	—	—	—
H $\beta$ Narrow	$39.20 \pm 0.34$	$583 \pm 63$	$198 \pm 25$	$3.63 \pm 1.77$
<b>H<math>\beta</math> Broad</b>	—	—	—	—
[O III] 5007	$39.95 \pm 0.06$	$583 \pm 63$	$198 \pm 25$	$21.82 \pm 1.96$
He I Narrow	—	—	—	—
<b>He I Broad</b>	—	—	—	—
[O I] 6300	—	—	—	—
H $\alpha$ Narrow	$39.57 \pm 0.12$	$294 \pm 62$	$123 \pm 25$	$18.09 \pm 2.65$
<b>H<math>\alpha</math> Broad</b>	<b><math>40.64 \pm 0.06</math></b>	<b><math>4552 \pm 800</math></b>	<b><math>1952 \pm 46</math></b>	<b><math>208.14 \pm 11.12</math></b>
[N II] 6585	$39.48 \pm 0.12$	$294 \pm 62$	$123 \pm 25$	$14.50 \pm 2.72$
[S II] 6718	$38.93 \pm 0.36$	$294 \pm 62$	$123 \pm 25$	$4.33 \pm 2.38$
[S II] 6732	$39.18 \pm 0.18$	$294 \pm 62$	$123 \pm 25$	$7.79 \pm 2.37$

## Emission Summary

H $\alpha$ broad SNR	1.18
H $\beta$ broad SNR	0.43
H $\gamma$ broad SNR	0.00
AGN frac	0.49
Host frac	0.51
$\log L_{5100, \text{Host}}$	42.31
Fe II/H $\beta$	—
Fe II/[O III]	2.38

## Quality Flags

spurious_hab/hbb	0/0
15100	2
balmer	2
balmer_snr	2
hb_width	2
balmer_width	2