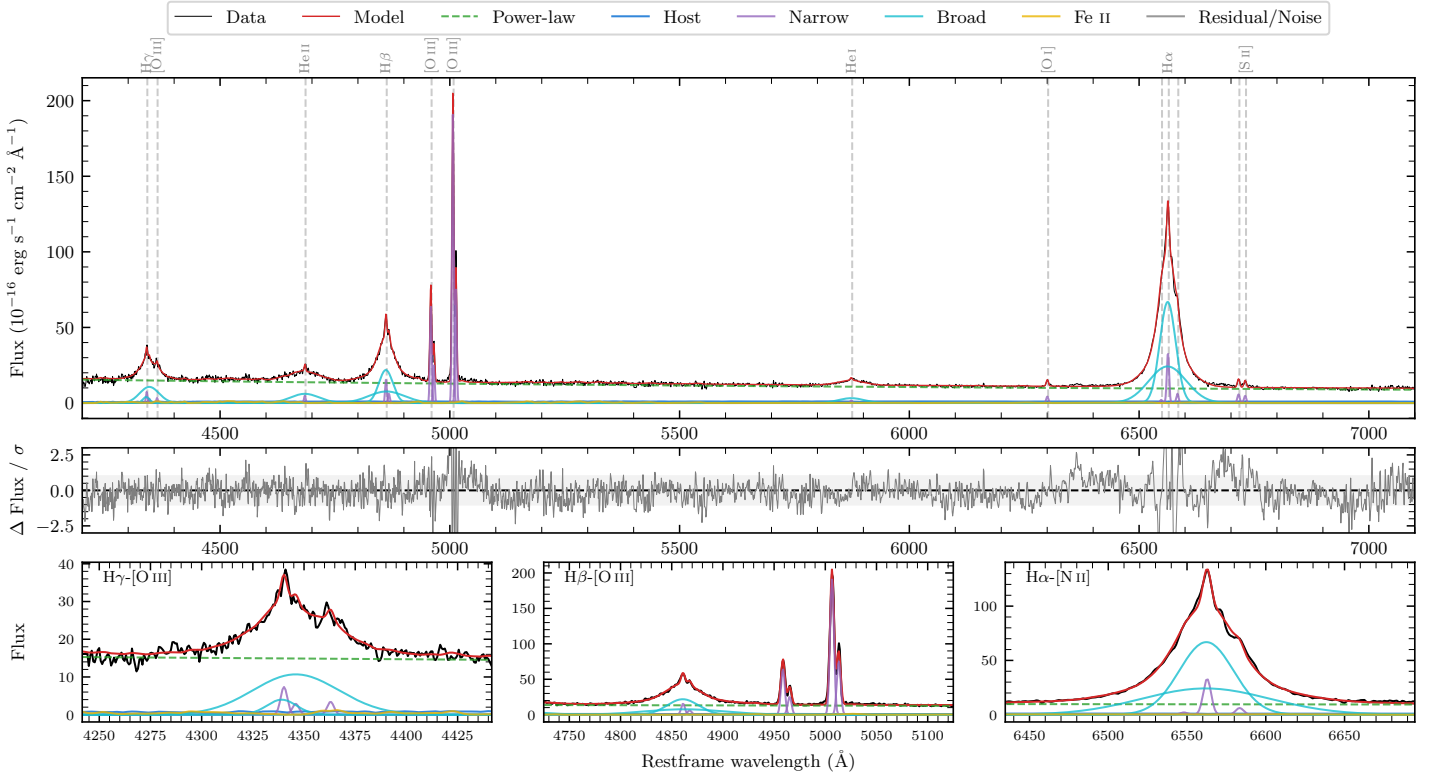
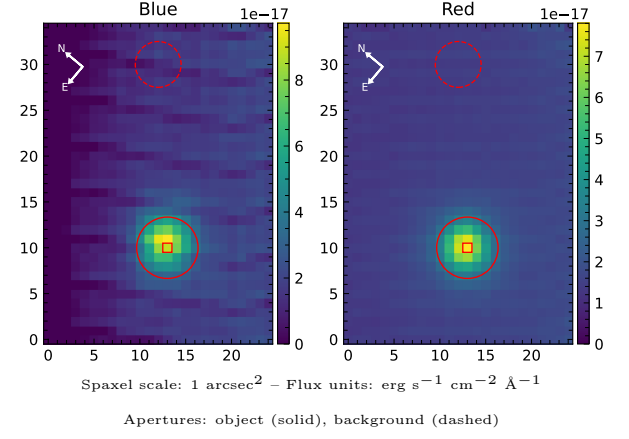


ATO J176.4186–18.4541

Spectrum ID	91966198_sp1	Spectrum type	Sy 1.5
Alt name	g1145405–182715	Quality flag	good
z	0.0325	AGN reference	6dFGS
RA, Dec	176.4187, –18.4542	MW $E(B - V)$	0.033
MJD	60384.74	Power law α_ν	-0.93 ± 0.05
SNR/ \AA B/R	11.0/13.2	$\log L_{5100, \text{AGN}}$	43.20 ± 0.01
Obs airmass	1.52	$\log H\beta_{\text{Br}}/[\text{O III}]$	0.10 ± 0.01
SMSS ID	91966198	$\log M_{L5100}/M_\odot$	7.41 ± 0.03
Neighbour	13.6", 91966199	$\log M_{\text{H}\alpha}/M_\odot$	7.27 ± 0.03
SMSS $\langle r_6''_{\text{ap}} \rangle$	nan \pm nan	$\log M_{\text{H}\beta}/M_\odot$	7.50 ± 0.03
2MASS K_{ext}	11.37 ± 0.08	$\log M_{[\text{O III}]} / M_\odot$	7.61 ± 0.02



Emission Line Measurements

Line	$\log L$ (erg s ⁻¹)	FWHM (km s ⁻¹)	σ (km s ⁻¹)	EW (Å)
H γ Narrow	40.04 ± 0.11	276 ± 62	211 ± 25	2.94 ± 0.29
Hγ Broad	41.21 ± 0.02	2764 ± 257	1159 ± 41	43.98 ± 0.85
[O III] 4364	39.56 ± 0.17	269 ± 62	114 ± 25	0.99 ± 0.23
He II Narrow	39.74 ± 0.09	269 ± 62	114 ± 25	1.62 ± 0.21
He II Broad	41.08 ± 0.02	4670 ± 128	1983 ± 54	35.62 ± 0.86
H β Narrow	40.41 ± 0.04	276 ± 62	211 ± 25	7.85 ± 0.29
Hβ Broad	41.61 ± 0.01	2647 ± 62	1280 ± 41	123.27 ± 1.01
[O III] 5007	41.51 ± 0.01	276 ± 62	211 ± 25	102.31 ± 0.34
He I Narrow	39.39 ± 0.15	269 ± 62	114 ± 25	0.92 ± 0.19
He I Broad	40.76 ± 0.03	3324 ± 119	1412 ± 50	21.37 ± 0.69
[O I] 6300	39.82 ± 0.05	269 ± 62	114 ± 25	2.66 ± 0.21
H α Narrow	40.72 ± 0.01	269 ± 62	114 ± 25	22.22 ± 0.35
Hα Broad	42.14 ± 0.01	2199 ± 64	1027 ± 25	578.08 ± 1.02
[N II] 6585	40.00 ± 0.05	269 ± 62	114 ± 25	4.18 ± 0.32
[S II] 6718	39.97 ± 0.03	269 ± 62	114 ± 25	4.03 ± 0.23
[S II] 6732	39.89 ± 0.04	269 ± 62	114 ± 25	3.38 ± 0.23

Emission Summary

H α broad SNR	63.94
H β broad SNR	20.60
H γ broad SNR	9.98
AGN frac	0.93
Host frac	0.07
$\log L_{5100, \text{Host}}$	42.06
Fe II/H β	0.13
Fe II/[O III]	0.17

Quality Flags

spurious_hab/hbb	0/0
15100	0
balmer	0
balmer_snr	0
hb_width	0
balmer_width	0