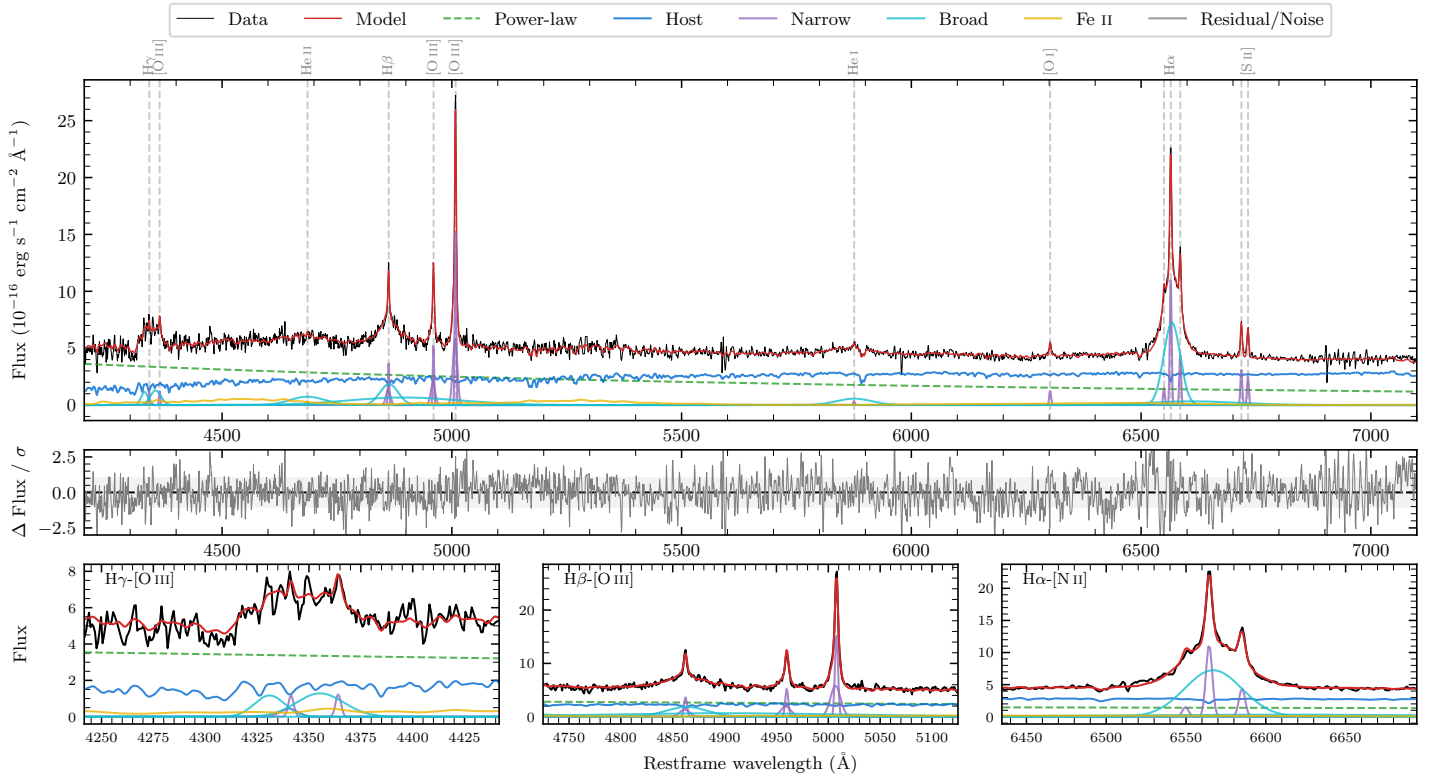
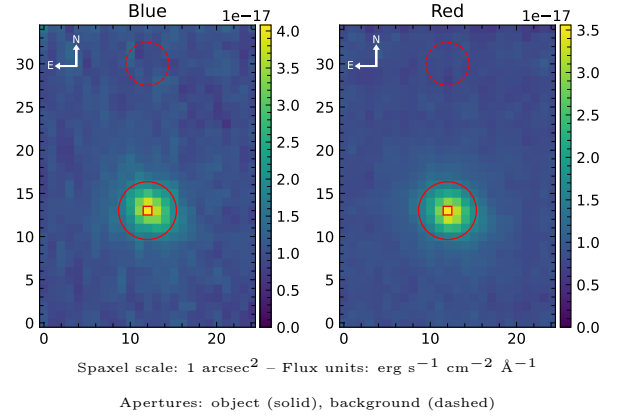


LEDA 73791

Spectrum ID	9171635_sp1	Spectrum type	Sy 1.5
Alt name	g0111512-404544	Quality flag	good
z	0.0543	AGN reference	6dFGS
RA, Dec	17.9632, -40.7620	MW $E(B - V)$	0.012
MJD	60178.72	Power law α_ν	0.13 ± 0.16
SNR/ \AA B/R	13.7/21.7	$\log L_{5100, \text{AGN}}$	42.93 ± 0.03
Obs airmass	1.01	$\log H\beta_{\text{Br}}/[\text{O III}]$	-0.15 ± 0.27
SMSS ID	9171635	$\log M_{L5100}/M_\odot$	7.36 ± 0.03
Neighbour	None $< 15''$	$\log M_{H\alpha}/M_\odot$	6.79 ± 0.04
SMSS $\langle r_6 \rangle_{\text{ap}}$	16.77 ± 0.09	$\log M_{H\beta}/M_\odot$	7.22 ± 0.14
2MASS K_{ext}	13.35 ± 0.18	$\log M_{[\text{O III}]} / M_\odot$	7.42 ± 0.04



Emission Line Measurements

Line	$\log L$ (erg s $^{-1}$)	FWHM (km s $^{-1}$)	σ (km s $^{-1}$)	EW (Angstroms)
H γ Narrow	39.80 ± 0.11	266 ± 63	226 ± 26	2.64 ± 0.44
Hγ Broad	40.64 ± 0.04	3088 ± 122	1004 ± 32	18.25 ± 0.78
[O III] 4364	39.48 ± 0.14	212 ± 63	89 ± 25	1.28 ± 0.24
He II Narrow	38.94 ± 0.34	212 ± 63	89 ± 25	0.43 ± 0.25
He II Broad	—	—	—	—
H β Narrow	40.34 ± 0.03	266 ± 63	226 ± 26	11.59 ± 0.49
Hβ Broad	$40.83^{+0.51}_{-0.03}$	2859 ± 75	1072 ± 34	36.40 ± 1.05
[O III] 5007	40.98 ± 0.01	266 ± 63	226 ± 26	54.82 ± 0.55
He I Narrow	39.07 ± 0.16	212 ± 63	89 ± 25	0.95 ± 0.22
He I Broad	40.61 ± 0.03	4608 ± 130	1957 ± 55	32.46 ± 1.21
[O I] 6300	39.65 ± 0.04	212 ± 63	89 ± 25	4.15 ± 0.26
H α Narrow	40.61 ± 0.01	212 ± 63	89 ± 25	41.67 ± 0.46
Hα Broad	41.48 ± 0.01	1983 ± 64	980 ± 38	310.33 ± 2.59
[N II] 6585	40.20 ± 0.02	212 ± 63	89 ± 25	16.36 ± 0.41
[S II] 6718	40.06 ± 0.02	212 ± 63	89 ± 25	12.30 ± 0.33
[S II] 6732	39.98 ± 0.02	212 ± 63	89 ± 25	10.21 ± 0.45

Emission Summary

H α broad SNR	19.90
H β broad SNR	4.88
H γ broad SNR	3.70
AGN frac	0.53
Host frac	0.47
$\log L_{5100, \text{Host}}$	42.88
Fe II/H β	—
Fe II/[O III]	—

Quality Flags

spurious_hab/hbb	0/1
15100	0
balmer	0
balmer_snr	0
hb_width	0
balmer_width	0