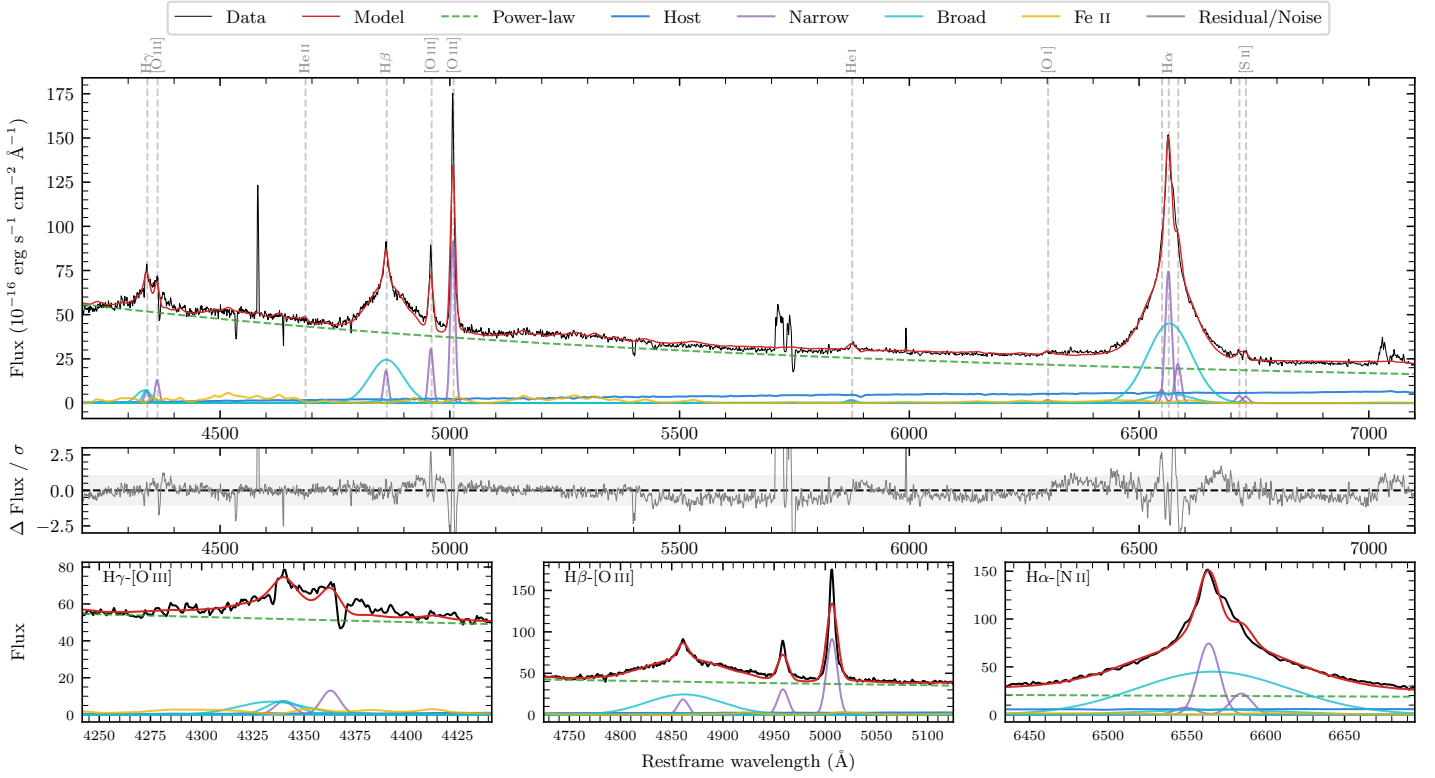
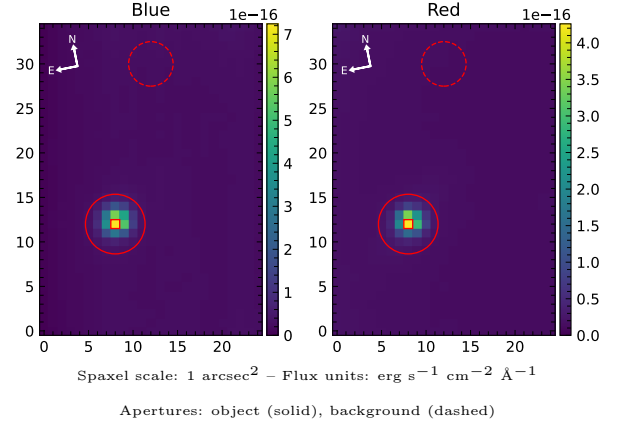


# HE 1106–2321

Spectrum ID	91321153_sp1	Spectrum type	Sy 1.5
Alt name	g1108530–233811	Quality flag	good
$z$	0.0819	AGN reference	6dFGS
RA, Dec	167.2206, –23.6365	MW $E(B - V)$	0.087
MJD	59280.49	Power law $\alpha_\nu$	$0.34 \pm 0.10$
SNR/Å B/R	9.1/11.1	$\log L_{5100, \text{AGN}}$	$44.48 \pm 0.01$
Obs airmass	1.19	$\log H\beta_{\text{Br}}/[\text{O III}]$	$0.29 \pm 0.02$
SMSS ID	91321153	$\log M_{L5100}/M_\odot$	$8.55 \pm 0.03$
Neighbour	None $< 15''$	$\log M_{\text{H}\alpha}/M_\odot$	$8.57 \pm 0.05$
SMSS $\langle r_6 \rangle_{\text{ap}}$	$14.36 \pm 0.12$	$\log M_{\text{H}\beta}/M_\odot$	$8.56 \pm 0.03$
2MASS $K_{\text{ext}}$	$11.83 \pm 0.05$	$\log M_{[\text{O III}]} / M_\odot$	$8.61 \pm 0.04$



## Emission Line Measurements

Line	$\log L$ (erg s $^{-1}$ )	FWHM (km s $^{-1}$ )	$\sigma$ (km s $^{-1}$ )	EW (Å)
H $\gamma$ Narrow	$41.20 \pm 0.29$	$740 \pm 74$	$314 \pm 30$	$1.76 \pm 0.43$
<b>H<math>\gamma</math> Broad</b>	<b><math>41.91 \pm 0.09</math></b>	<b><math>1920 \pm 459</math></b>	<b><math>781 \pm 87</math></b>	<b><math>9.09 \pm 0.83</math></b>
[O III] 4364	$41.43 \pm 0.11$	$738 \pm 74$	$313 \pm 30$	$3.15 \pm 0.45$
He II Narrow	$40.60 \pm 0.44$	$738 \pm 74$	$313 \pm 30$	$0.56 \pm 0.41$
<b>He II Broad</b>	<b><math>40.71 \pm 0.42</math></b>	<b><math>1188 \pm 64</math></b>	<b><math>504 \pm 26</math></b>	<b><math>0.69 \pm 0.52</math></b>
H $\beta$ Narrow	$41.65 \pm 0.08$	$740 \pm 74$	$314 \pm 30$	$6.53 \pm 0.51$
<b>H<math>\beta</math> Broad</b>	<b><math>42.64 \pm 0.02</math></b>	<b><math>5257 \pm 188</math></b>	<b><math>1955 \pm 60</math></b>	<b><math>64.63 \pm 1.35</math></b>
[O III] 5007	$42.35 \pm 0.01$	$740 \pm 74$	$314 \pm 30$	$35.69 \pm 0.59$
He I Narrow	$40.62 \pm 0.38$	$738 \pm 74$	$313 \pm 30$	$0.98 \pm 0.38$
<b>He I Broad</b>	<b><math>40.97 \pm 0.28</math></b>	<b><math>1227 \pm 100</math></b>	<b><math>521 \pm 41</math></b>	<b><math>1.99 \pm 0.50</math></b>
[O I] 6300	$40.73 \pm 0.20$	$738 \pm 74$	$313 \pm 30$	$1.51 \pm 0.44$
H $\alpha$ Narrow	$42.36 \pm 0.02$	$738 \pm 74$	$313 \pm 30$	$70.46 \pm 0.72$
<b>H<math>\alpha</math> Broad</b>	<b><math>43.04 \pm 0.01</math></b>	<b><math>5194 \pm 141</math></b>	<b><math>1920 \pm 58</math></b>	<b><math>334.22 \pm 1.69</math></b>
[N II] 6585	$41.83 \pm 0.05$	$738 \pm 74$	$313 \pm 30$	$21.12 \pm 0.70$
[S II] 6718	$41.10 \pm 0.12$	$738 \pm 74$	$313 \pm 30$	$4.09 \pm 0.68$
[S II] 6732	$41.05 \pm 0.14$	$738 \pm 74$	$313 \pm 30$	$3.68 \pm 0.65$

## Emission Summary

H $\alpha$ broad SNR	10.61
H $\beta$ broad SNR	5.56
H $\gamma$ broad SNR	2.98
AGN frac	0.93
Host frac	0.07
$\log L_{5100, \text{Host}}$	43.32
Fe II/H $\beta$	0.41
Fe II/[O III]	0.80

## Quality Flags

spurious_hab/hbb	0/0
15100	0
balmer	0
balmer_snr	1
hb_width	0
balmer_width	0