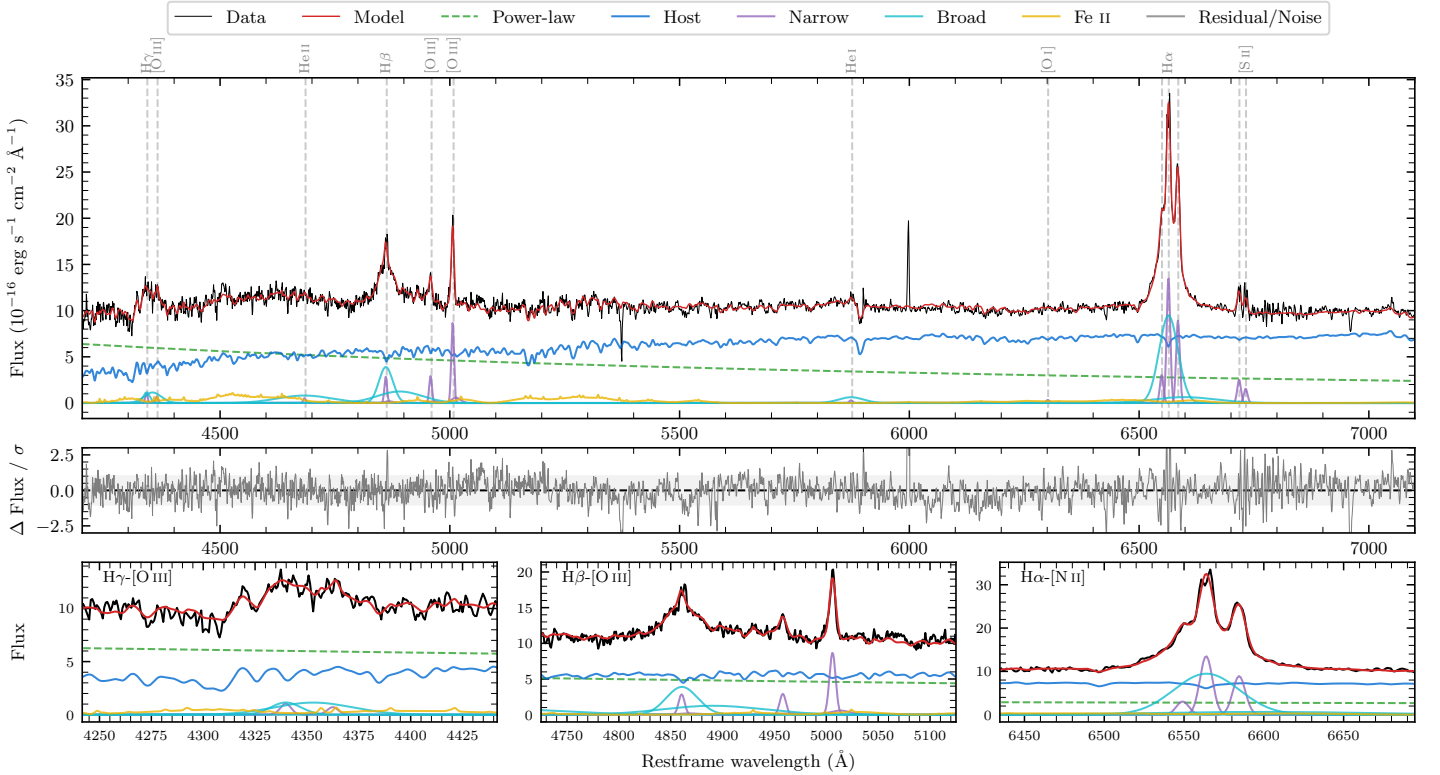
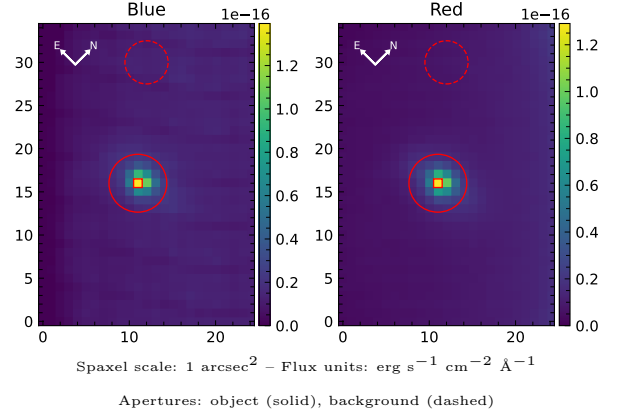


# LEDA 929778

Spectrum ID	91196205_sp1	Spectrum type	Sy 1.2
Alt name	g1046171-140228	Quality flag	good
$z$	0.0677	AGN reference	6dFGS
RA, Dec	161.5713, -14.0410	MW $E(B-V)$	0.052
MJD	60352.64	Power law $\alpha_\nu$	$-0.13 \pm 0.22$
SNR/ $\text{\AA}$ B/R	16.7/23.2	$\log L_{5100, \text{AGN}}$	$43.41 \pm 0.05$
Obs airmass	1.05	$\log H\beta_{\text{Br}}/[\text{O III}]$	$0.58 \pm 0.03$
SMSS ID	91196205	$\log M_{L5100}/M_\odot$	$7.48 \pm 0.05$
Neighbour	None $< 15''$	$\log M_{\text{H}\alpha}/M_\odot$	$7.14 \pm 0.03$
SMSS $\langle r_6'' \text{ap} \rangle$	$16.21 \pm 0.06$	$\log M_{\text{H}\beta}/M_\odot$	$7.46 \pm 0.05$
2MASS $K_{\text{ext}}$	$12.38 \pm 0.11$	$\log M_{[\text{O III}]} / M_\odot$	$7.34 \pm 0.05$



## Emission Line Measurements

Line	$\log L$ ( $\text{erg s}^{-1}$ )	FWHM ( $\text{km s}^{-1}$ )	$\sigma$ ( $\text{km s}^{-1}$ )	EW ( $\text{\AA}$ )
H $\gamma$ Narrow	$40.00 \pm 0.28$	$439 \pm 63$	$347 \pm 49$	$1.48 \pm 0.62$
<b>H<math>\gamma</math> Broad</b>	<b><math>40.95 \pm 0.06</math></b>	<b><math>2172 \pm 612</math></b>	<b><math>951 \pm 71</math></b>	<b><math>13.30 \pm 0.90</math></b>
[O III] 4364	$39.74 \pm 0.31$	$423 \pm 63$	$179 \pm 25$	$0.82 \pm 0.43$
He II Narrow	$39.66 \pm 0.26$	$423 \pm 63$	$179 \pm 25$	$0.77 \pm 0.34$
<b>He II Broad</b>	<b><math>41.16 \pm 0.05</math></b>	<b><math>8935 \pm 267</math></b>	<b><math>3794 \pm 113</math></b>	<b><math>24.80 \pm 1.58</math></b>
H $\beta$ Narrow	$40.49 \pm 0.08$	$439 \pm 63$	$347 \pm 48$	$5.59 \pm 0.63$
<b>H<math>\beta</math> Broad</b>	<b><math>41.56 \pm 0.02</math></b>	<b><math>2606 \pm 118</math></b>	<b><math>1641 \pm 58</math></b>	<b><math>66.18 \pm 1.49</math></b>
[O III] 5007	$40.98 \pm 0.03$	$439 \pm 63$	$347 \pm 48$	$18.55 \pm 0.68$
He I Narrow	$39.50 \pm 0.31$	$423 \pm 63$	$179 \pm 25$	$0.83 \pm 0.38$
<b>He I Broad</b>	<b><math>40.71 \pm 0.07</math></b>	<b><math>3229 \pm 183</math></b>	<b><math>1371 \pm 77</math></b>	<b><math>13.29 \pm 1.14</math></b>
[O I] 6300	$39.58 \pm 0.23$	$423 \pm 63$	$179 \pm 25$	$1.14 \pm 0.41$
H $\alpha$ Narrow	$41.20 \pm 0.02$	$423 \pm 63$	$179 \pm 25$	$51.25 \pm 0.63$
<b>H<math>\alpha</math> Broad</b>	<b><math>41.86 \pm 0.01</math></b>	<b><math>2290 \pm 71</math></b>	<b><math>1019 \pm 49</math></b>	<b><math>229.56 \pm 2.32</math></b>
[N II] 6585	$41.03 \pm 0.02$	$423 \pm 63$	$179 \pm 25$	$34.09 \pm 0.61$
[S II] 6718	$40.48 \pm 0.04$	$423 \pm 63$	$179 \pm 25$	$10.12 \pm 0.62$
[S II] 6732	$40.28 \pm 0.07$	$423 \pm 63$	$179 \pm 25$	$6.34 \pm 0.65$

## Emission Summary

H $\alpha$ broad SNR	15.31
H $\beta$ broad SNR	7.53
H $\gamma$ broad SNR	3.17
AGN frac	0.45
Host frac	0.55
$\log L_{5100, \text{Host}}$	43.49
Fe II/H $\beta$	0.61
Fe II/[O III]	2.30

## Quality Flags

spurious_hab/hbb	0/0
15100	1
balmer	0
balmer_snr	0
hb_width	1
balmer_width	0