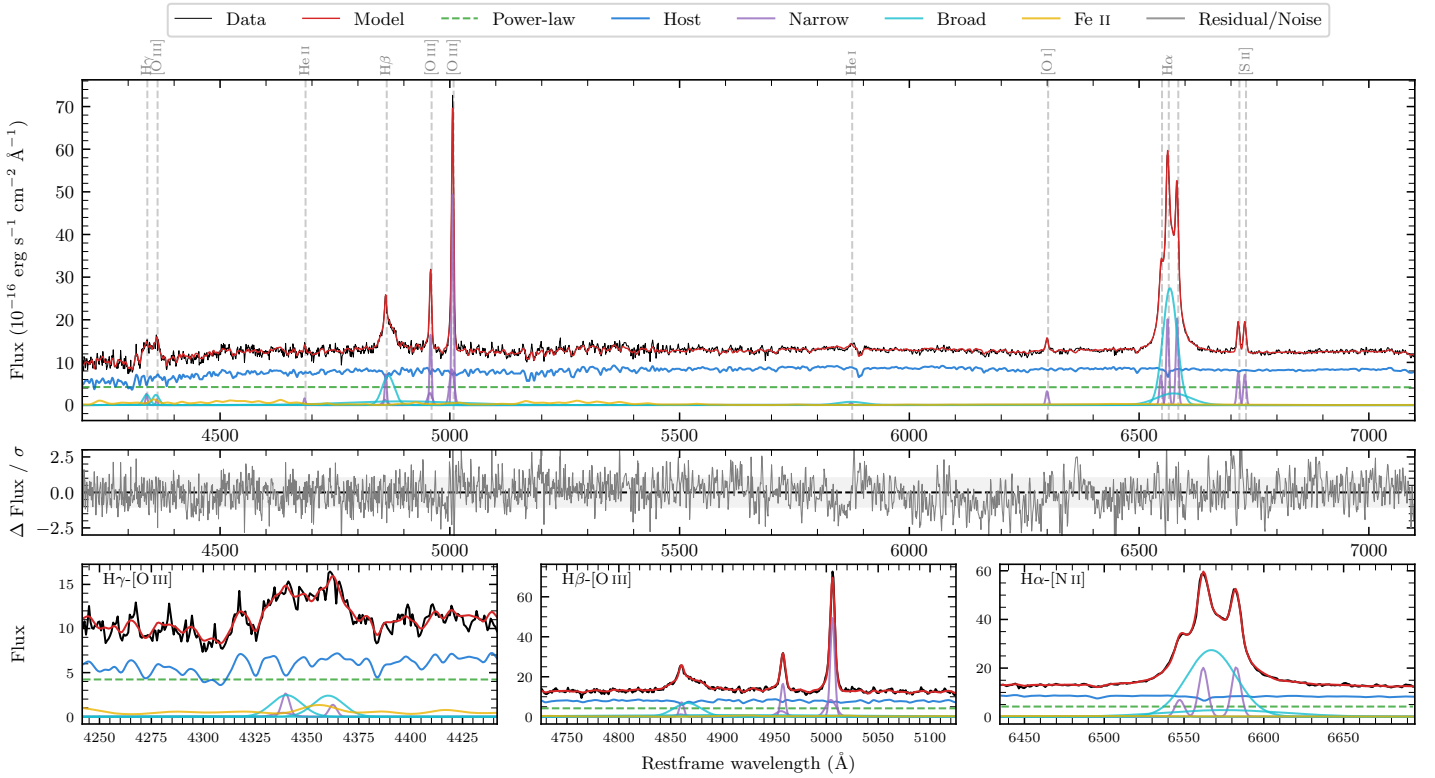
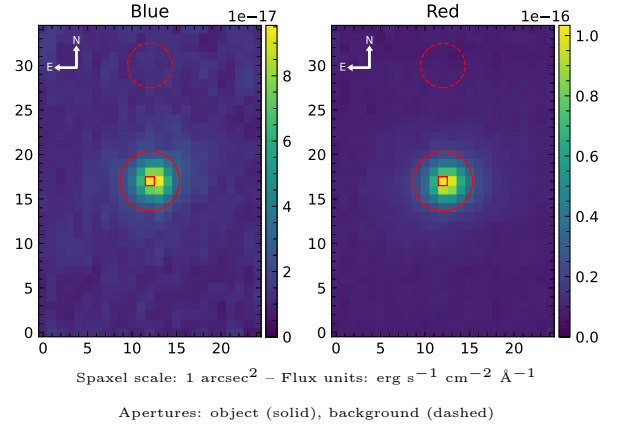


AM 0038–372

Spectrum ID	9103187_sp1	Spectrum type	Sy 1.5
Alt name	g0040392–371317	Quality flag	good
z	0.0355	AGN reference	6dFGS
RA, Dec	10.1632, –37.2213	MW $E(B - V)$	0.014
MJD	60224.54	Power law α_ν	-1.98 ± 0.02
SNR/ \AA B/R	18.2/35.9	$\log L_{5100, \text{AGN}}$	42.81 ± 0.01
Obs airmass	1.02	$\log H\beta_{\text{Br}}/[\text{O III}]$	-0.22 ± 0.18
SMSS ID	9103187	$\log M_{L5100}/M_\odot$	6.96 ± 0.03
Neighbour	None $< 15''$	$\log M_{\text{H}\alpha}/M_\odot$	6.76 ± 0.03
SMSS $\langle r_6''_{\text{ap}} \rangle$	15.51 ± 0.06	$\log M_{\text{H}\beta}/M_\odot$	6.88 ± 0.10
2MASS K_{ext}	11.82 ± 0.06	$\log M_{[\text{O III}]} / M_\odot$	7.11 ± 0.03



Emission Line Measurements

Line	$\log L$ (erg s^{-1})	FWHM (km s^{-1})	σ (km s^{-1})	EW (\AA)
H γ Narrow	39.73 ± 0.12	337 ± 63	199 ± 26	4.28 ± 0.63
Hγ Broad	40.44 ± 0.05	2445 ± 109	765 ± 25	21.68 ± 0.97
[O III] 4364	39.30 ± 0.23	310 ± 63	130 ± 25	1.60 ± 0.43
He II Narrow	39.40 ± 0.14	310 ± 63	130 ± 25	1.99 ± 0.37
He II Broad	—	—	—	—
H β Narrow	40.22 ± 0.03	337 ± 63	199 ± 26	13.20 ± 0.52
Hβ Broad	$40.85^{+0.34}_{-0.02}$	1918 ± 37	694 ± 25	56.17 ± 0.92
[O III] 5007	41.06 ± 0.01	337 ± 63	199 ± 26	92.31 ± 0.58
He I Narrow	39.02 ± 0.21	310 ± 63	130 ± 25	0.83 ± 0.21
He I Broad	40.24 ± 0.04	3504 ± 78	1488 ± 32	13.82 ± 1.38
[O I] 6300	39.84 ± 0.03	310 ± 63	130 ± 25	5.53 ± 0.22
H α Narrow	40.65 ± 0.01	310 ± 63	130 ± 25	35.70 ± 0.33
Hα Broad	41.61 ± 0.01	1755 ± 63	728 ± 25	326.25 ± 0.90
[N II] 6585	40.66 ± 0.01	310 ± 63	130 ± 25	36.33 ± 0.32
[S II] 6718	40.23 ± 0.01	310 ± 63	130 ± 25	13.71 ± 0.25
[S II] 6732	40.21 ± 0.01	310 ± 63	130 ± 25	13.02 ± 0.25

Emission Summary

H α broad SNR	43.94
H β broad SNR	10.07
H γ broad SNR	4.00
AGN frac	0.36
Host frac	0.64
$\log L_{5100, \text{Host}}$	43.06
Fe II/H β	—
Fe II/[O III]	—

Quality Flags

spurious_hab/hbb	0/1
15100	1
balmer	0
balmer_snr	0
hb_width	0
balmer_width	0