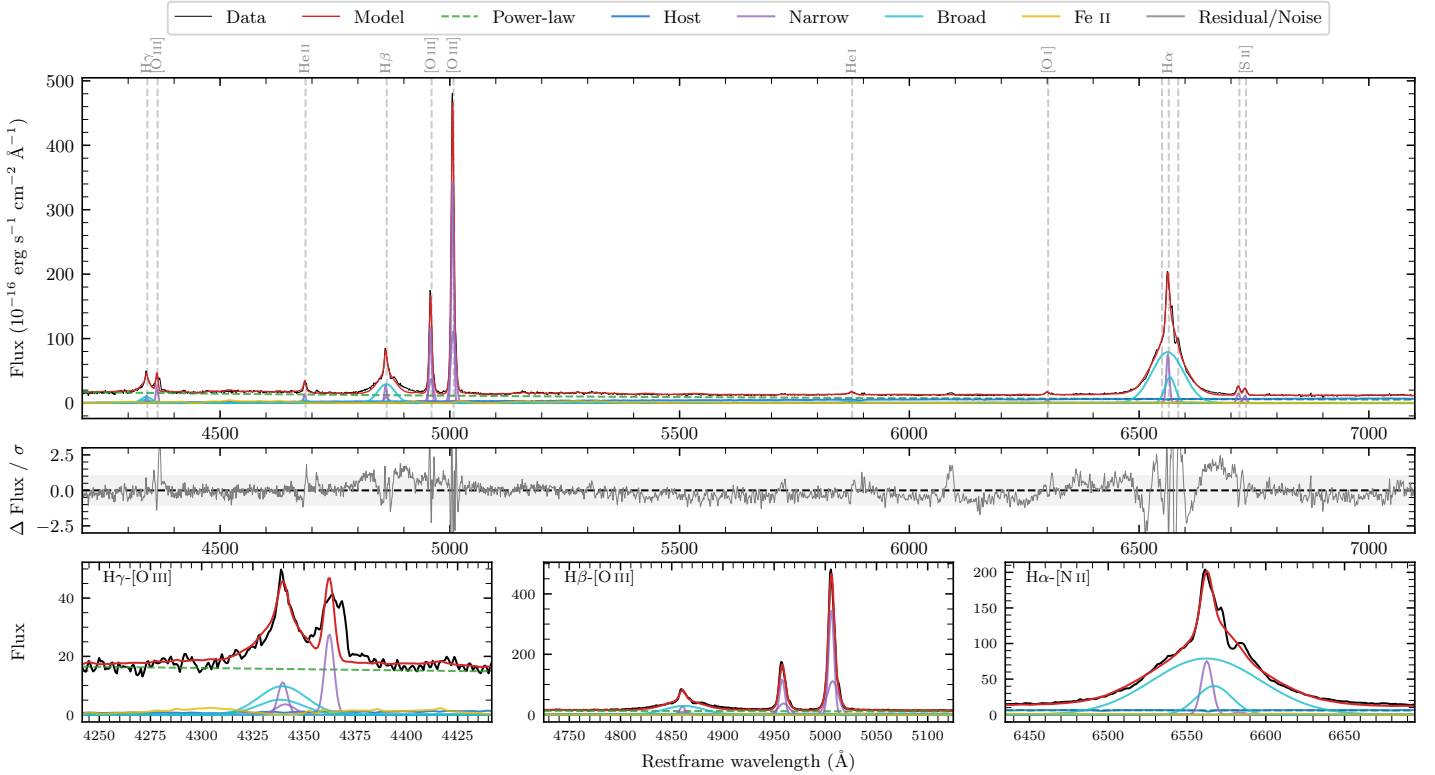
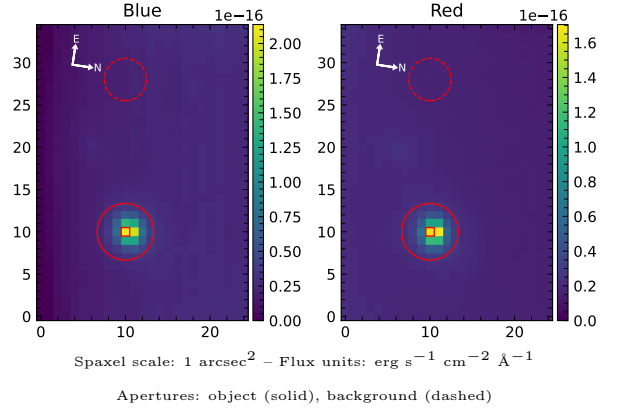


# CTS 89

Spectrum ID	90985522_sp2	Spectrum type	Sy 1.5
Alt name	g1014116-124043	Quality flag	good
$z$	0.0680	AGN reference	6dFGS
RA, Dec	153.5483, -12.6787	MW $E(B - V)$	0.060
MJD	59725.37	Power law $\alpha_\nu$	$0.27 \pm 0.17$
SNR/ $\text{\AA}$ B/R	4.7/7.8	$\log L_{5100, \text{AGN}}$	$43.80 \pm 0.02$
Obs airmass	1.08	$\log H\beta_{\text{Br}}/[\text{O III}]$	$-0.37 \pm 0.04$
SMSS ID	90985522	$\log M_{L5100}/M_\odot$	$7.69 \pm 0.13$
Neighbour	10.4", 90985524	$\log M_{\text{H}\alpha}/M_\odot$	$7.93 \pm 0.05$
SMSS $\langle r_6'' \text{ap} \rangle$	$16.40 \pm 0.03$	$\log M_{\text{H}\beta}/M_\odot$	$7.84 \pm 0.13$
2MASS $K_{\text{ext}}$	$12.28 \pm 0.06$	$\log M_{[\text{O III}]} / M_\odot$	$8.20 \pm 0.14$



## Emission Line Measurements

Line	$\log L$ ( $\text{erg s}^{-1}$ )	FWHM ( $\text{km s}^{-1}$ )	$\sigma$ ( $\text{km s}^{-1}$ )	EW ( $\text{\AA}$ )
H $\gamma$ Narrow	$41.11 \pm 0.11$	$432 \pm 64$	$244 \pm 28$	$7.19 \pm 0.95$
<b>H<math>\gamma</math> Broad</b>	<b><math>41.71 \pm 0.06</math></b>	<b><math>1858 \pm 126</math></b>	<b><math>678 \pm 42</math></b>	<b><math>29.05 \pm 1.56</math></b>
[O III] 4364	$41.30 \pm 0.06$	$376 \pm 70$	$159 \pm 28$	$11.04 \pm 0.70$
He II Narrow	$41.01 \pm 0.11$	$376 \pm 70$	$159 \pm 28$	$6.69 \pm 0.70$
<b>He II Broad</b>	<b><math>41.09 \pm 0.18</math></b>	<b><math>1342 \pm 127</math></b>	<b><math>569 \pm 53</math></b>	<b><math>7.96 \pm 1.27</math></b>
H $\beta$ Narrow	$41.54 \pm 0.08$	$432 \pm 64$	$244 \pm 28$	$26.36 \pm 1.12$
<b>H<math>\beta</math> Broad</b>	<b><math>42.29 \pm 0.04</math></b>	<b><math>2730 \pm 437</math></b>	<b><math>1008 \pm 177</math></b>	<b><math>128.69 \pm 2.08</math></b>
[O III] 5007	$42.66 \pm 0.01$	$432 \pm 64$	$244 \pm 28$	$357.75 \pm 1.50$
He I Narrow	$40.41 \pm 0.19$	$376 \pm 70$	$159 \pm 28$	$2.77 \pm 0.61$
<b>He I Broad</b>	<b><math>40.97 \pm 0.14</math></b>	<b><math>1815 \pm 237</math></b>	<b><math>770 \pm 100</math></b>	<b><math>10.23 \pm 1.49</math></b>
[O I] 6300	$40.68 \pm 0.09$	$376 \pm 70$	$159 \pm 28$	$6.01 \pm 0.67$
H $\alpha$ Narrow	$41.91 \pm 0.04$	$376 \pm 70$	$159 \pm 28$	$114.39 \pm 1.46$
<b>H<math>\alpha</math> Broad</b>	<b><math>42.98 \pm 0.01</math></b>	<b><math>2572 \pm 104</math></b>	<b><math>1235 \pm 26</math></b>	<b><math>1386.41 \pm 3.35</math></b>
[N II] 6585	$40.55 \pm 0.50$	$376 \pm 70$	$159 \pm 28$	$5.26 \pm 1.20$
[S II] 6718	$41.22 \pm 0.04$	$376 \pm 70$	$159 \pm 28$	$24.43 \pm 0.98$
[S II] 6732	$41.10 \pm 0.05$	$376 \pm 70$	$159 \pm 28$	$18.61 \pm 1.03$

## Emission Summary

H $\alpha$ broad SNR	34.60
H $\beta$ broad SNR	9.70
H $\gamma$ broad SNR	4.38
AGN frac	0.79
Host frac	0.20
$\log L_{5100, \text{Host}}$	43.20
Fe II/H $\beta$	0.44
Fe II/[O III]	0.17

## Quality Flags

spurious_hab/hbb	0/0
15100	0
balmer	0
balmer_snr	0
hb_width	0
balmer_width	0