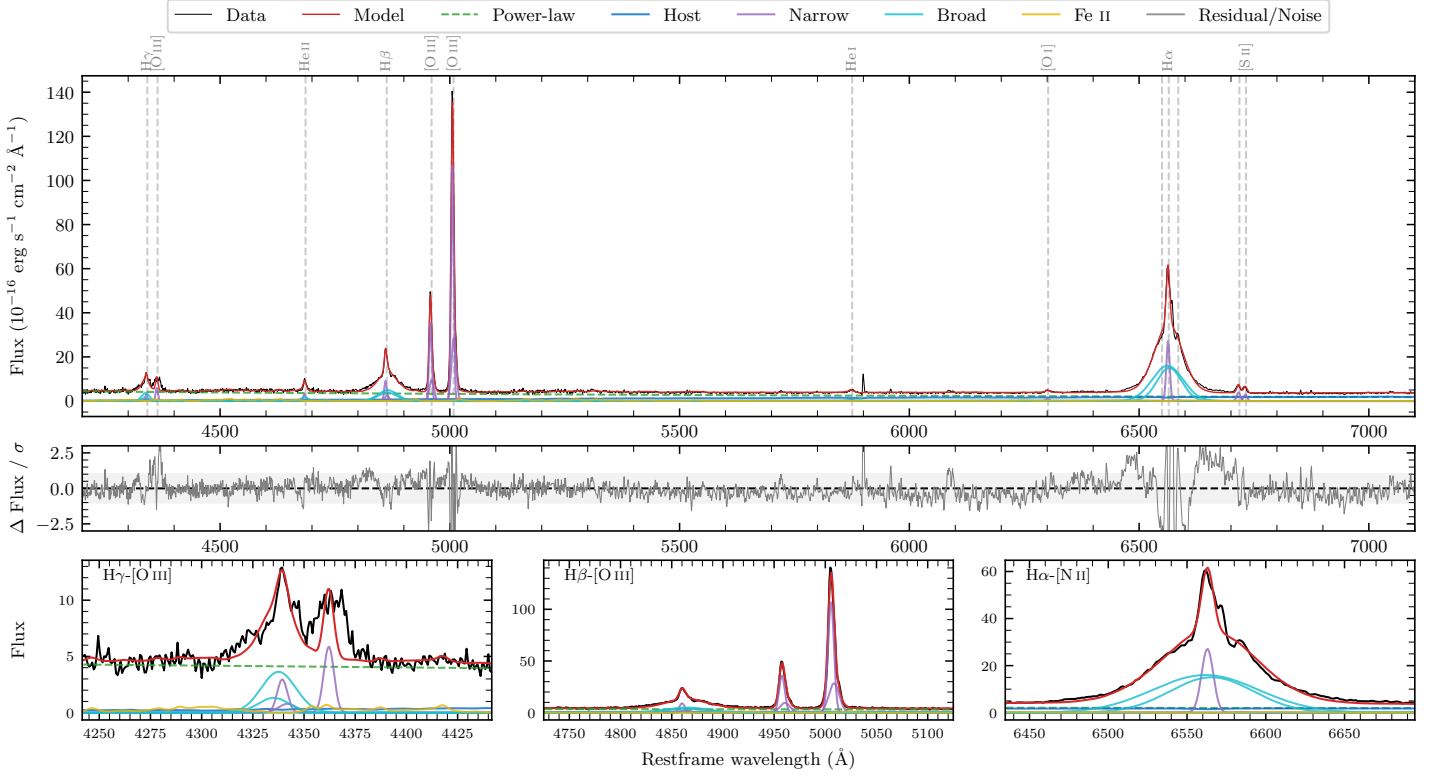
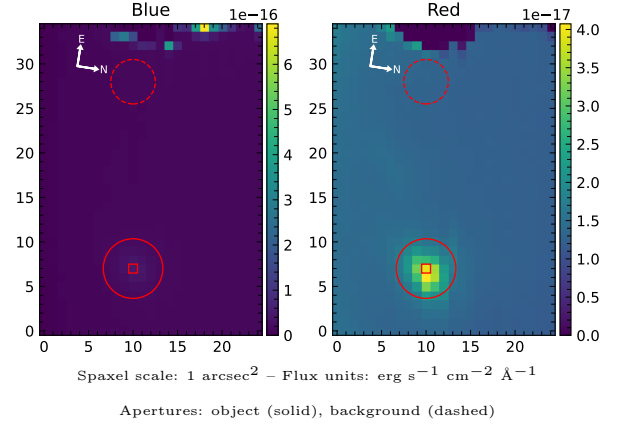


CTS 89

Spectrum ID	90985522_sp1	Spectrum type	Sy 1.5
Alt name	g1014116-124043	Quality flag	good
z	0.0680	AGN reference	6dFGS
RA, Dec	153.5483, -12.6787	MW $E(B - V)$	0.060
MJD	59672.52	Power law α_ν	-0.29 ± 0.46
SNR/ \AA B/R	4.4/7.2	$\log L_{5100, \text{AGN}}$	43.26 ± 0.05
Obs airmass	1.08	$\log H\beta_{\text{Br}}/[\text{O III}]$	-0.35 ± 0.04
SMSS ID	90985522	$\log M_{L5100}/M_\odot$	7.56 ± 0.07
Neighbour	10.4", 90985524	$\log M_{\text{H}\alpha}/M_\odot$	7.81 ± 0.07
SMSS $\langle r_{6'' \text{ap}} \rangle$	16.40 ± 0.03	$\log M_{\text{H}\beta}/M_\odot$	7.71 ± 0.07
2MASS K_{ext}	12.28 ± 0.06	$\log M_{[\text{O III}]} / M_\odot$	8.04 ± 0.06



Emission Line Measurements

Line	$\log L$ (erg s ⁻¹)	FWHM (km s ⁻¹)	σ (km s ⁻¹)	EW (Å)
H γ Narrow	40.50 ± 0.14	444 ± 65	236 ± 27	7.02 ± 1.02
Hγ Broad	41.12 ± 0.20	1353 ± 600	484 ± 197	26.44 ± 1.47
[O III] 4364	40.65 ± 0.18	402 ± 66	170 ± 27	9.58 ± 0.80
He II Narrow	40.40 ± 0.14	402 ± 66	170 ± 27	6.33 ± 0.79
He II Broad	40.64 ± 0.16	1191 ± 69	505 ± 28	10.26 ± 1.33
H β Narrow	41.03 ± 0.04	444 ± 65	236 ± 27	29.38 ± 1.13
Hβ Broad	41.77 ± 0.04	3091 ± 218	1119 ± 150	143.67 ± 2.32
[O III] 5007	42.12 ± 0.01	444 ± 65	236 ± 27	372.46 ± 1.36
He I Narrow	39.86 ± 0.26	402 ± 66	170 ± 27	2.70 ± 0.79
He I Broad	40.20 ± 0.23	1182 ± 68	502 ± 28	5.65 ± 1.47
[O I] 6300	40.09 ± 0.11	402 ± 66	170 ± 27	5.20 ± 0.71
H α Narrow	41.49 ± 0.05	402 ± 66	170 ± 27	134.05 ± 1.20
Hα Broad	42.46 ± 0.01	3245 ± 236	1212 ± 42	1238.74 ± 2.95
[N II] 6585	39.61 ± 0.41	402 ± 66	170 ± 27	1.83 ± 1.01
[S II] 6718	40.64 ± 0.04	402 ± 66	170 ± 27	20.34 ± 0.98
[S II] 6732	40.52 ± 0.05	402 ± 66	170 ± 27	15.57 ± 1.04

Emission Summary

H α broad SNR	29.41
H β broad SNR	8.41
H γ broad SNR	4.42
AGN frac	0.79
Host frac	0.21
$\log L_{5100, \text{Host}}$	42.68
Fe II/H β	0.31
Fe II/[O III]	0.13

Quality Flags

spurious_hab/hbb	0/0
15100	0
balmer	0
balmer_snr	0
hb_width	0
balmer_width	1