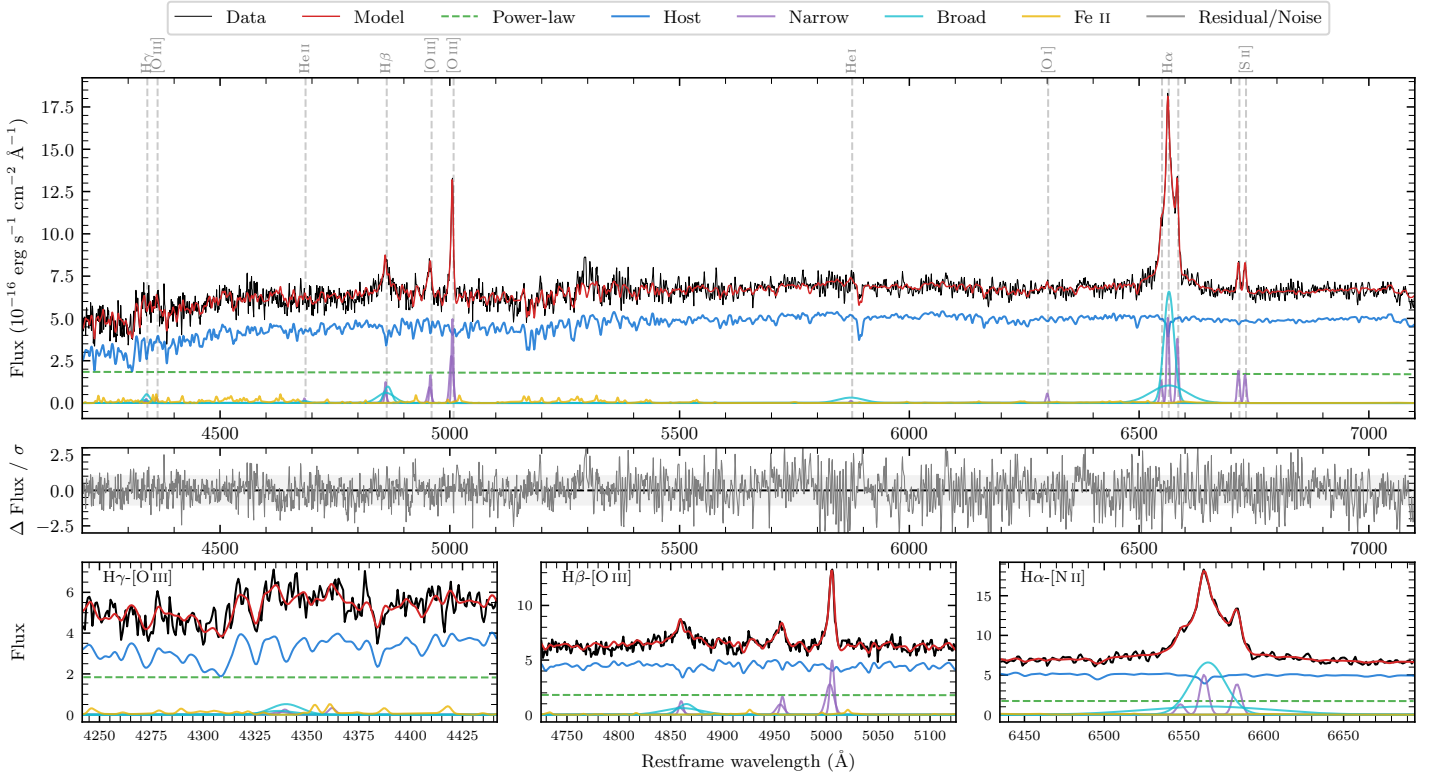
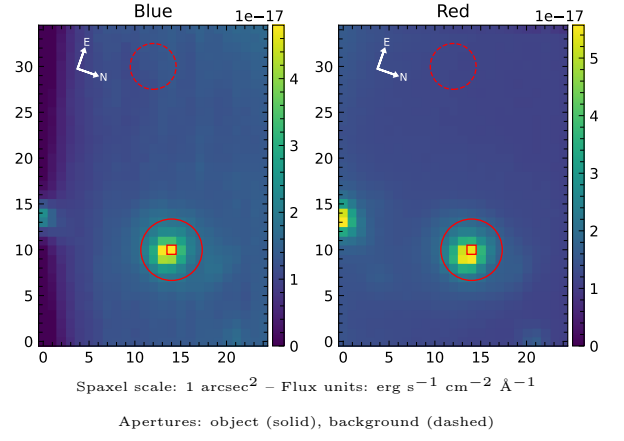


LEDA 901616

Spectrum ID	90948400_sp1	Spectrum type	Sy 1.5
Alt name	g1032141-160960	Quality flag	good
z	0.0523	AGN reference	6dFGS
RA, Dec	158.0589, -16.1666	MW $E(B - V)$	0.061
MJD	59671.54	Power law α_ν	-1.85 ± 0.11
SNR/ \AA B/R	12.9/27.4	$\log L_{5100, \text{AGN}}$	42.78 ± 0.06
Obs airmass	1.07	$\log H\beta_{\text{Br}}/[\text{O III}]$	-0.03 ± 0.06
SMSS ID	90948400	$\log M_{L5100}/M_\odot$	6.75 ± 0.12
Neighbour	12.1", 90948398	$\log M_{\text{H}\alpha}/M_\odot$	6.30 ± 0.05
SMSS $\langle r_{6'' \text{ap}} \rangle$	16.76 ± 0.07	$\log M_{\text{H}\beta}/M_\odot$	6.54 ± 0.13
2MASS K_{ext}	12.40 ± 0.11	$\log M_{[\text{O III}]} / M_\odot$	6.67 ± 0.12



Emission Line Measurements

Line	$\log L$ (erg s^{-1})	FWHM (km s^{-1})	σ (km s^{-1})	EW (\AA)
H γ Narrow	39.21 ± 0.44	363 ± 65	196 ± 26	1.32 ± 0.87
Hγ Broad	40.02 ± 0.15	1229 ± 75	459 ± 28	7.56 ± 1.39
[O III] 4364	39.00 ± 0.40	289 ± 63	120 ± 25	0.83 ± 0.63
He II Narrow	38.96 ± 0.41	289 ± 63	120 ± 25	0.76 ± 0.57
He II Broad	39.29 ± 0.42	1388 ± 64	589 ± 26	1.61 ± 1.25
H β Narrow	39.95 ± 0.09	363 ± 65	196 ± 26	7.42 ± 0.79
Hβ Broad	40.52 ± 0.06	1533 ± 192	718 ± 66	28.01 ± 1.76
[O III] 5007	40.56 ± 0.02	363 ± 65	196 ± 26	30.43 ± 0.80
He I Narrow	38.76 ± 0.38	289 ± 63	120 ± 25	0.49 ± 0.32
He I Broad	40.20 ± 0.07	3400 ± 64	1444 ± 26	13.66 ± 1.22
[O I] 6300	39.40 ± 0.11	289 ± 63	120 ± 25	2.18 ± 0.33
H α Narrow	40.37 ± 0.02	289 ± 63	120 ± 25	20.37 ± 0.43
Hα Broad	41.30 ± 0.01	1300 ± 63	688 ± 25	172.79 ± 1.49
[N II] 6585	40.25 ± 0.02	289 ± 63	120 ± 25	15.67 ± 0.48
[S II] 6718	39.96 ± 0.03	289 ± 63	120 ± 25	8.03 ± 0.36
[S II] 6732	39.90 ± 0.04	289 ± 63	120 ± 25	6.97 ± 0.38

Emission Summary

H α broad SNR	16.70
H β broad SNR	3.43
H γ broad SNR	1.71
AGN frac	0.30
Host frac	0.70
$\log L_{5100, \text{Host}}$	43.15
Fe II/H β	0.97
Fe II/[O III]	0.90

Quality Flags

spurious_hab/hbb	0/0
15100	1
balmer	0
balmer_snr	1
hb_width	0
balmer_width	0