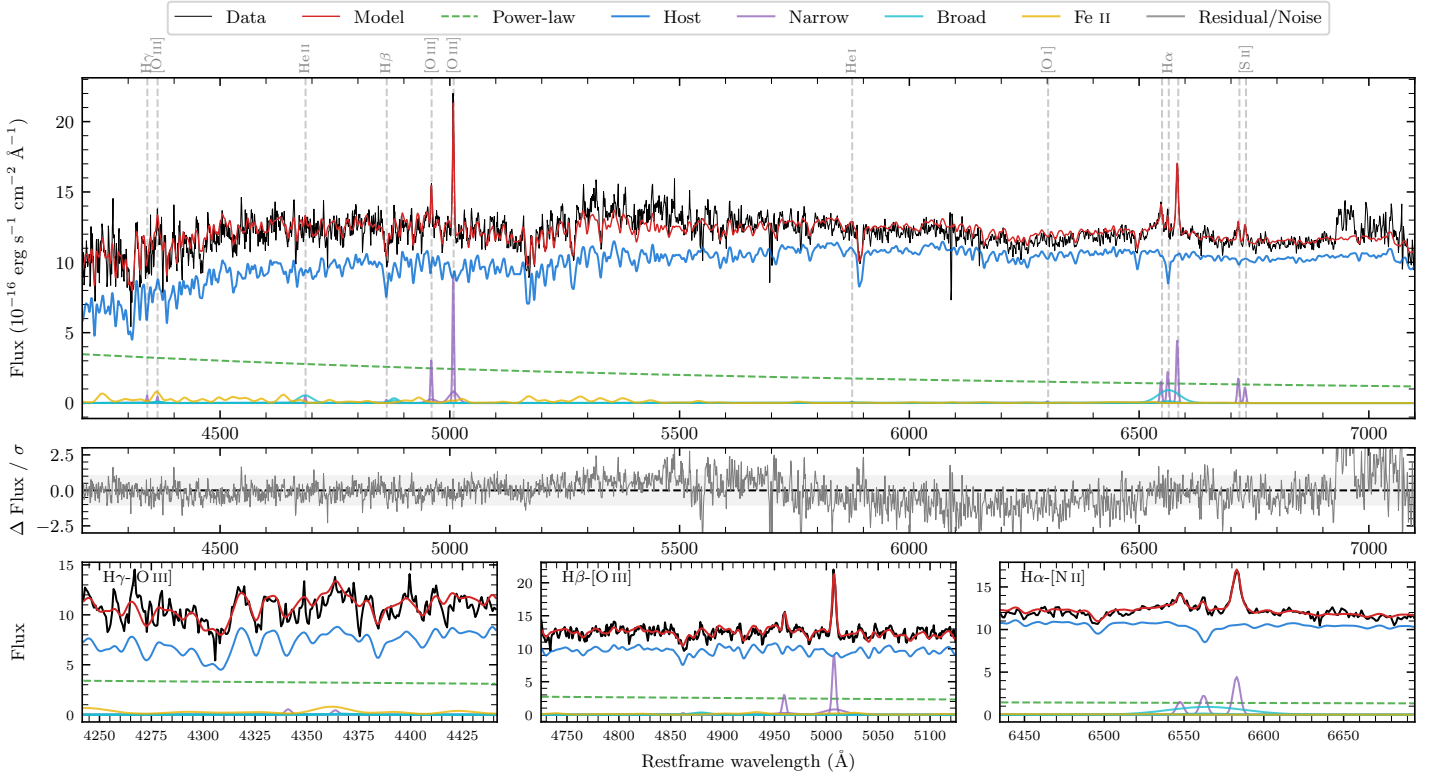
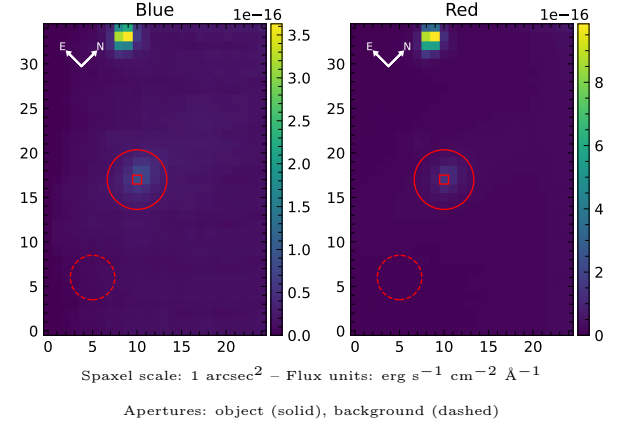


ESO 501-57

Spectrum ID	90657290_sp1	Spectrum type	Sy 1.5+
Alt name	g1037498-240952	Quality flag	good
z	0.0345	AGN reference	6dFGS
RA, Dec	159.4575, -24.1645	MW $E(B-V)$	0.058
MJD	60783.42	Power law α_ν	0.05 ± 0.13
SNR/ \AA B/R	10.7/27.7	$\log L_{5100, \text{AGN}}$	42.51 ± 0.03
Obs airmass	1.03	$\log H\beta_{\text{Br}}/[\text{O III}]$	< -0.07
SMSS ID	90657290	$\log M_{L5100}/M_\odot$	—
Neighbour	14.3", 2148589766	$\log M_{\text{H}\alpha}/M_\odot$	6.17 ± 0.10
SMSS $\langle r_{6''}^{\text{ap}} \rangle$	16.08 ± 0.02	$\log M_{\text{H}\beta}/M_\odot$	—
2MASS K_{ext}	11.89 ± 0.09	$\log M_{[\text{O III}]} / M_\odot$	—



Emission Line Measurements

Line	$\log L$ (erg s ⁻¹)	FWHM (km s ⁻¹)	σ (km s ⁻¹)	EW (Å)
H γ Narrow	—	—	—	—
Hγ Broad	—	—	—	—
[O III] 4364	—	—	—	—
He II Narrow	—	—	—	—
He II Broad	39.76 ± 0.25	2246 ± 62	954 ± 25	7.60 ± 2.53
H β Narrow	—	—	—	—
Hβ Broad	< 40.15	—	—	—
[O III] 5007	40.22 ± 0.06	260 ± 63	361 ± 60	25.20 ± 2.12
He I Narrow	—	—	—	—
He I Broad	—	—	—	—
[O I] 6300	—	—	—	—
H α Narrow	39.56 ± 0.07	243 ± 62	102 ± 25	9.45 ± 0.70
Hα Broad	40.23 ± 0.05	2362 ± 186	917 ± 31	43.99 ± 2.35
[N II] 6585	39.85 ± 0.03	243 ± 62	102 ± 25	18.78 ± 0.72
[S II] 6718	39.46 ± 0.07	243 ± 62	102 ± 25	7.82 ± 0.79
[S II] 6732	39.26 ± 0.11	243 ± 62	102 ± 25	5.05 ± 0.71

Emission Summary

H α broad SNR	1.02
H β broad SNR	0.61
H γ broad SNR	0.00
AGN frac	0.20
Host frac	0.80
$\log L_{5100, \text{Host}}$	43.11
Fe II/H β	—
Fe II/[O III]	1.55

Quality Flags

spurious_hab/hbb	0/0
15100	1
balmer	2
balmer_snr	2
hb_width	2
balmer_width	2