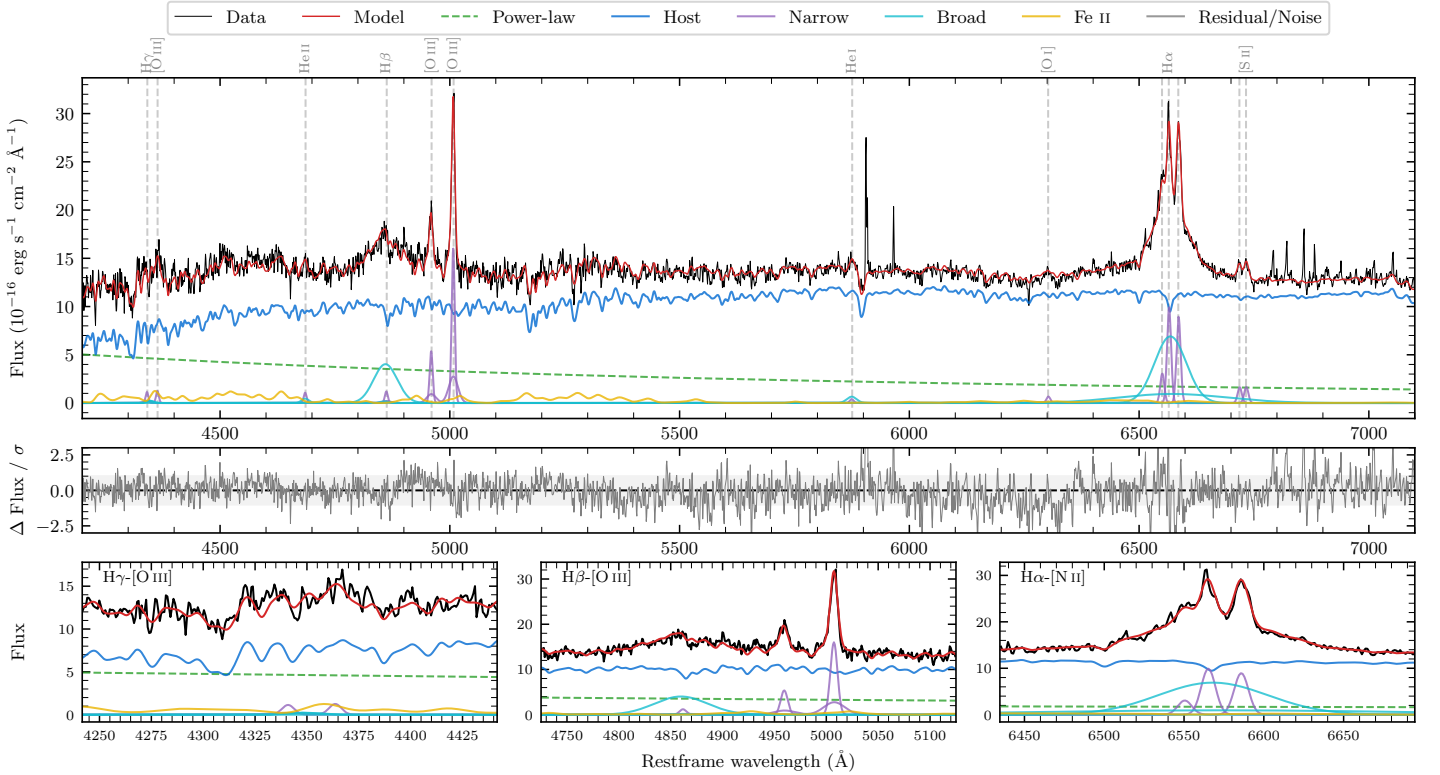
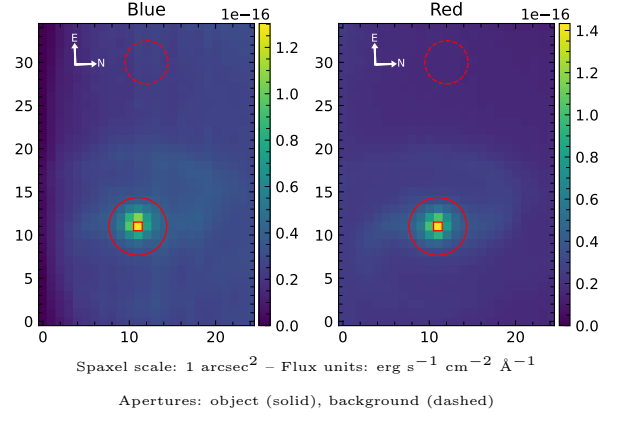


LEDA 154659

Spectrum ID	89958962_sp1	Spectrum type	Sy 1.5
Alt name	g1007504-090445	Quality flag	good
z	0.0667	AGN reference	6dFGS
RA, Dec	151.9602, -9.0791	MW $E(B - V)$	0.061
MJD	59725.36	Power law α_ν	0.43 ± 0.07
SNR/ \AA B/R	13.1/27.6	$\log L_{5100, \text{AGN}}$	43.24 ± 0.02
Obs airmass	1.10	$\log H\beta_{\text{Br}}/[\text{O III}]$	0.11 ± 0.03
SMSS ID	89958962	$\log M_{L5100}/M_\odot$	7.69 ± 0.04
Neighbour	9.0", 2147647696	$\log M_{H\alpha}/M_\odot$	7.72 ± 0.02
SMSS $\langle r_{6''}^{\text{ap}} \rangle$	16.58 ± 0.14	$\log M_{H\beta}/M_\odot$	7.72 ± 0.04
2MASS K_{ext}	11.66 ± 0.09	$\log M_{[\text{O III}]} / M_\odot$	7.81 ± 0.03



Emission Line Measurements

Line	$\log L$ (erg s^{-1})	FWHM (km s^{-1})	σ (km s^{-1})	EW (\AA)
H γ Narrow	40.17 ± 0.25	527 ± 64	385 ± 32	2.91 ± 1.25
Hγ Broad	—	—	—	—
[O III] 4364	40.03 ± 0.24	480 ± 63	203 ± 25	2.16 ± 0.75
He II Narrow	39.99 ± 0.28	480 ± 63	203 ± 25	2.36 ± 0.78
He II Broad	40.03 ± 0.39	1184 ± 63	502 ± 25	2.48 ± 1.23
H β Narrow	40.24 ± 0.21	527 ± 64	385 ± 32	4.52 ± 1.38
Hβ Broad	41.49 ± 0.03	3610 ± 125	1364 ± 27	79.52 ± 2.44
[O III] 5007	41.37 ± 0.02	527 ± 64	385 ± 32	66.78 ± 1.59
He I Narrow	39.67 ± 0.35	480 ± 63	203 ± 25	1.96 ± 0.70
He I Broad	40.30 ± 0.15	1280 ± 69	543 ± 28	8.39 ± 1.36
[O I] 6300	39.92 ± 0.14	480 ± 63	203 ± 25	4.08 ± 0.76
H α Narrow	41.10 ± 0.02	480 ± 63	203 ± 25	69.37 ± 1.07
Hα Broad	42.00 ± 0.01	4017 ± 78	2002 ± 62	549.18 ± 5.53
[N II] 6585	41.06 ± 0.02	480 ± 63	203 ± 25	63.37 ± 1.06
[S II] 6718	40.33 ± 0.06	480 ± 63	203 ± 25	12.48 ± 1.07
[S II] 6732	40.34 ± 0.06	480 ± 63	203 ± 25	12.73 ± 1.13

Emission Summary

H α broad SNR	8.00
H β broad SNR	4.36
H γ broad SNR	0.61
AGN frac	0.24
Host frac	0.76
$\log L_{5100, \text{Host}}$	43.74
Fe II/H β	0.89
Fe II/[O III]	1.13

Quality Flags

spurious_hab/hbb	0/0
15100	2
balmer	0
balmer_snr	2
hb_width	0
balmer_width	1