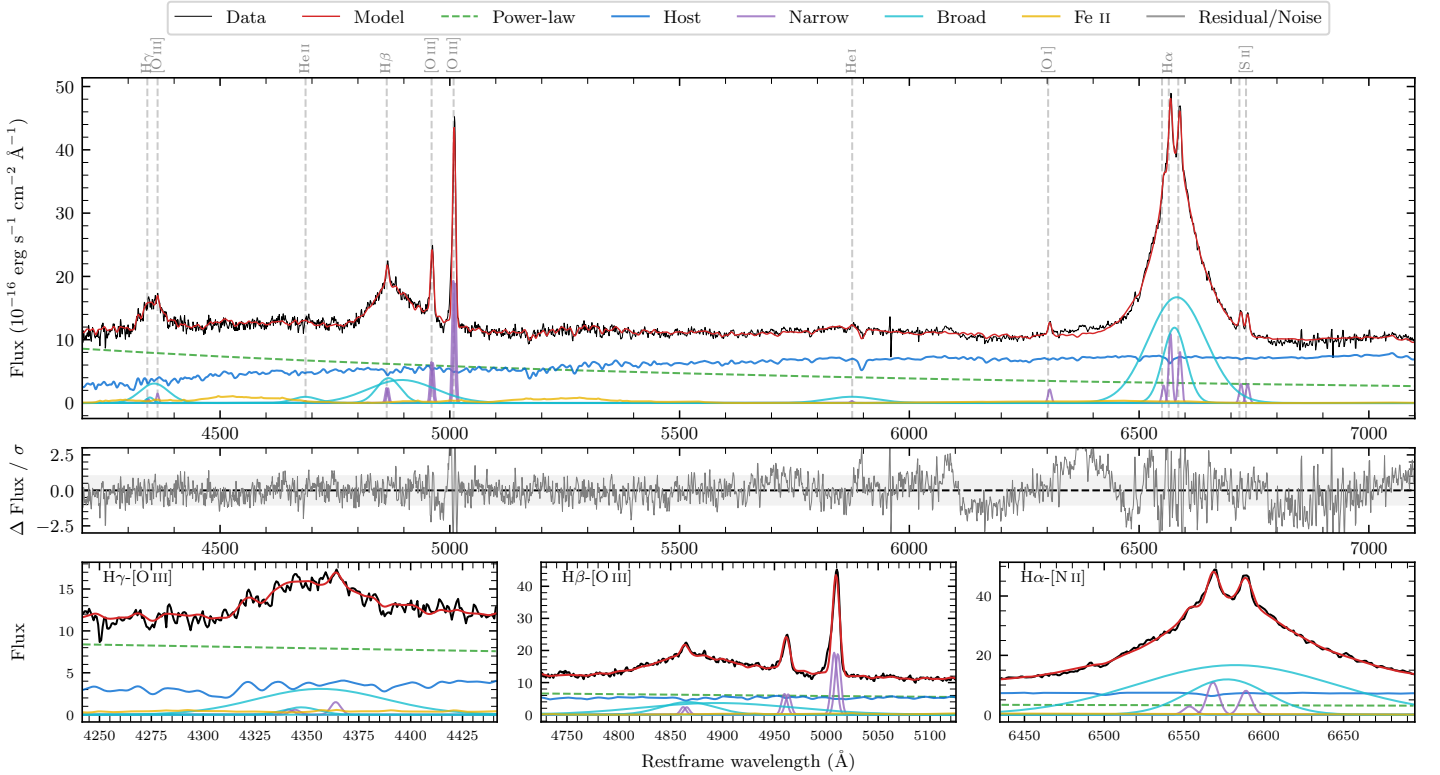
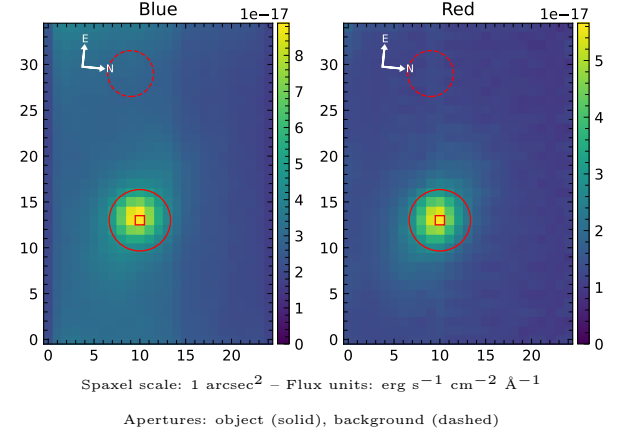


# 1RXS J100848.8–095442

Spectrum ID	89907492_sp1	Spectrum type	Sy 1.2
Alt name	g1008486–095451	Quality flag	good
$z$	0.0571	AGN reference	6dFGS
RA, Dec	152.2025, –9.9141	MW $E(B - V)$	0.058
MJD	59018.41	Power law $\alpha_\nu$	$0.22 \pm 0.15$
SNR/ $\text{\AA}$ B/R	15.2/28.5	$\log L_{5100, \text{AGN}}$	$43.35 \pm 0.02$
Obs airmass	1.65	$\log H\beta_{\text{Br}}/[\text{O III}]$	$0.53 \pm 0.01$
SMSS ID	89907492	$\log M_{L5100}/M_\odot$	$8.17 \pm 0.04$
Neighbour	None $< 15''$	$\log M_{\text{H}\alpha}/M_\odot$	$8.06 \pm 0.02$
SMSS $\langle r_6''_{\text{ap}} \rangle$	$15.60 \pm 0.17$	$\log M_{\text{H}\beta}/M_\odot$	$8.33 \pm 0.04$
2MASS $K_{\text{ext}}$	$11.88 \pm 0.07$	$\log M_{[\text{O III}]} / M_\odot$	$8.23 \pm 0.04$



## Emission Line Measurements

Line	$\log L$ (erg s <sup>-1</sup> )	FWHM (km s <sup>-1</sup> )	$\sigma$ (km s <sup>-1</sup> )	EW (Å)
H $\gamma$ Narrow	$39.79 \pm 0.28$	$495 \pm 63$	$200 \pm 25$	$0.98 \pm 0.32$
<b>H<math>\gamma</math> Broad</b>	<b><math>41.33 \pm 0.03</math></b>	<b><math>4220 \pm 525</math></b>	<b><math>1709 \pm 47</math></b>	<b><math>34.49 \pm 1.12</math></b>
[O III] 4364	$39.89 \pm 0.19$	$402 \pm 63$	$169 \pm 25$	$1.25 \pm 0.30$
He II Narrow	–	–	–	–
<b>He II Broad</b>	<b><math>40.76 \pm 0.08</math></b>	<b><math>4124 \pm 135</math></b>	<b><math>1751 \pm 57</math></b>	<b><math>10.55 \pm 1.18</math></b>
H $\beta$ Narrow	$40.43 \pm 0.06$	$495 \pm 63$	$200 \pm 25$	$5.55 \pm 0.37$
<b>H<math>\beta</math> Broad</b>	<b><math>41.88 \pm 0.01</math></b>	<b><math>5944 \pm 258</math></b>	<b><math>3108 \pm 44</math></b>	<b><math>159.66 \pm 1.93</math></b>
[O III] 5007	$41.35 \pm 0.01$	$495 \pm 63$	$200 \pm 25$	$49.40 \pm 0.40$
He I Narrow	$39.34 \pm 0.28$	$402 \pm 63$	$169 \pm 25$	$0.68 \pm 0.27$
<b>He I Broad</b>	<b><math>41.05 \pm 0.03</math></b>	<b><math>6484 \pm 102</math></b>	<b><math>2753 \pm 42</math></b>	<b><math>34.78 \pm 1.24</math></b>
[O I] 6300	$40.21 \pm 0.04$	$402 \pm 63$	$169 \pm 25$	$5.90 \pm 0.33$
H $\alpha$ Narrow	$40.93 \pm 0.02$	$402 \pm 63$	$169 \pm 25$	$33.95 \pm 0.53$
<b>H<math>\alpha</math> Broad</b>	<b><math>42.44 \pm 0.01</math></b>	<b><math>4403 \pm 75</math></b>	<b><math>2061 \pm 25</math></b>	<b><math>1124.35 \pm 1.89</math></b>
[N II] 6585	$40.80 \pm 0.02$	$402 \pm 63$	$169 \pm 25$	$25.38 \pm 0.54$
[S II] 6718	$40.38 \pm 0.03$	$402 \pm 63$	$169 \pm 25$	$10.07 \pm 0.40$
[S II] 6732	$40.38 \pm 0.03$	$402 \pm 63$	$169 \pm 25$	$10.10 \pm 0.40$

## Emission Summary

H $\alpha$ broad SNR	37.14
H $\beta$ broad SNR	9.56
H $\gamma$ broad SNR	5.02
AGN frac	0.51
Host frac	0.49
$\log L_{5100, \text{Host}}$	43.33
Fe II/H $\beta$	0.24
Fe II/[O III]	0.83

## Quality Flags

spurious_hab/hbb	0/0
15100	0
balmer	0
balmer_snr	0
hb_width	1
balmer_width	0