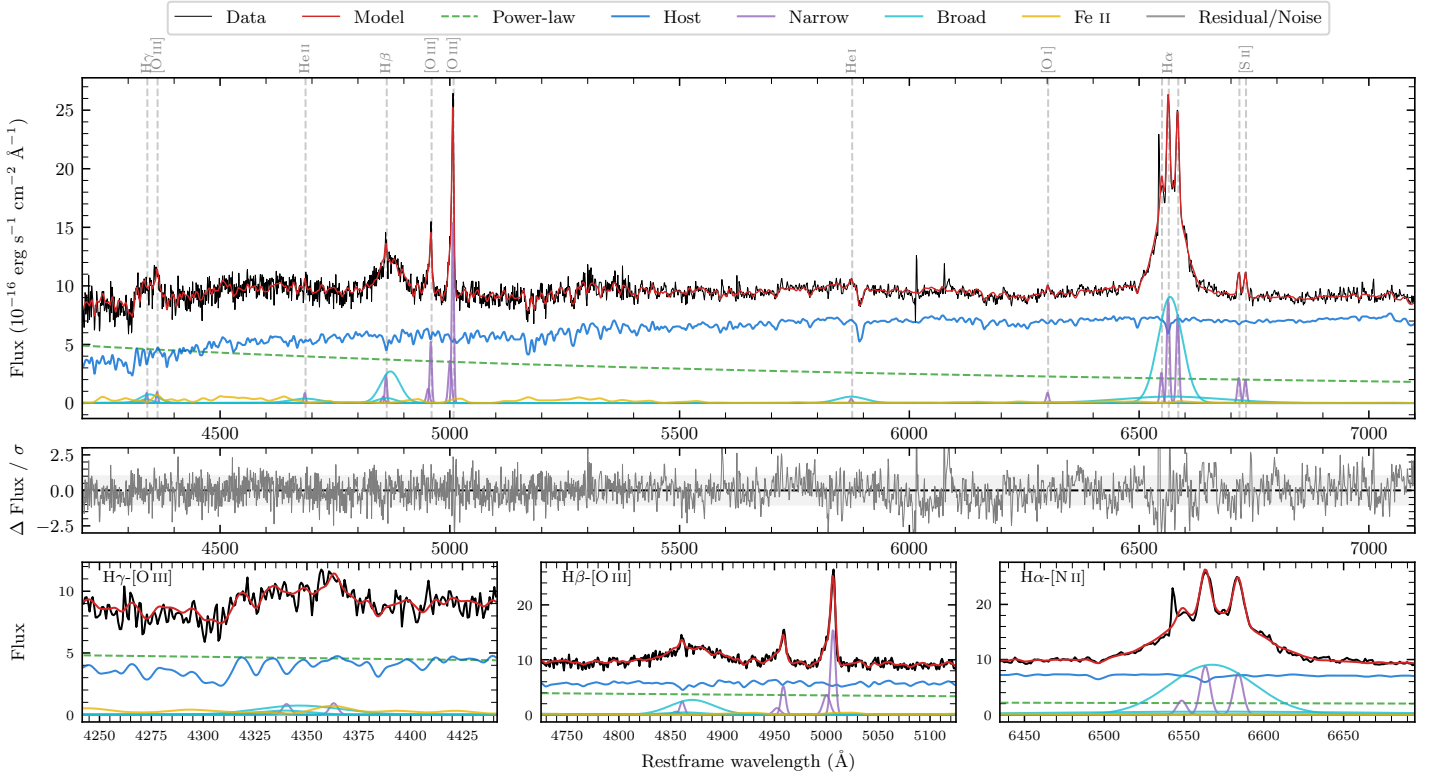
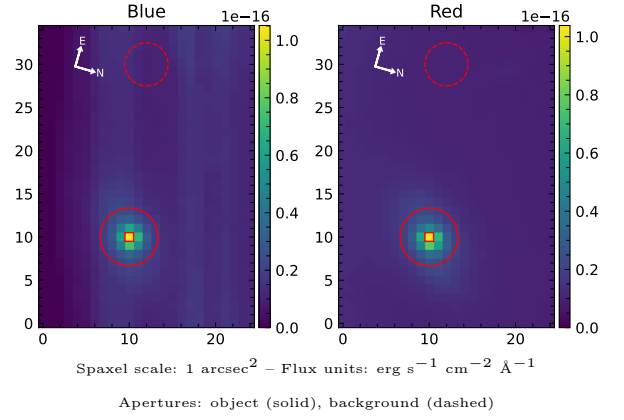


# LEDA 965352

Spectrum ID	89665239_sp1	Spectrum type	Sy 1.5
Alt name	g0941115-112822	Quality flag	good
$z$	0.0470	AGN reference	6dFGS
RA, Dec	145.2981, -11.4729	MW $E(B-V)$	0.041
MJD	59668.55	Power law $\alpha_\nu$	$-0.10 \pm 0.22$
SNR/ $\text{\AA}$ B/R	14.7/29.1	$\log L_{5100, \text{AGN}}$	$42.96 \pm 0.05$
Obs airmass	1.20	$\log H\beta_{\text{Br}}/[\text{O III}]$	$0.13 \pm 0.02$
SMSS ID	89665239	$\log M_{L5100}/M_\odot$	$7.43 \pm 0.04$
Neighbour	None $< 15''$	$\log M_{\text{H}\alpha}/M_\odot$	$7.22 \pm 0.03$
SMSS $\langle r_6 \rangle_{\text{ap}}$	$16.33 \pm 0.04$	$\log M_{\text{H}\beta}/M_\odot$	$7.33 \pm 0.05$
2MASS $K_{\text{ext}}$	$12.52 \pm 0.09$	$\log M_{[\text{O III}]} / M_\odot$	$7.40 \pm 0.04$



## Emission Line Measurements

Line	$\log L$ ( $\text{erg s}^{-1}$ )	FWHM ( $\text{km s}^{-1}$ )	$\sigma$ ( $\text{km s}^{-1}$ )	EW ( $\text{\AA}$ )
H $\gamma$ Narrow	$39.51 \pm 0.27$	$357 \pm 63$	$227 \pm 26$	$1.32 \pm 0.48$
<b>H<math>\gamma</math> Broad</b>	<b><math>40.44 \pm 0.10</math></b>	<b><math>2935 \pm 354</math></b>	<b><math>1104 \pm 89</math></b>	<b><math>10.89 \pm 1.25</math></b>
[O III] 4364	$39.41 \pm 0.26$	$325 \pm 63$	$137 \pm 25$	$1.08 \pm 0.38$
He II Narrow	$39.40 \pm 0.25$	$325 \pm 63$	$137 \pm 25$	$1.21 \pm 0.41$
<b>He II Broad</b>	<b><math>40.23 \pm 0.13</math></b>	<b><math>5044 \pm 183</math></b>	<b><math>2142 \pm 77</math></b>	<b><math>8.41 \pm 1.50</math></b>
H $\beta$ Narrow	$40.00 \pm 0.08$	$357 \pm 63$	$227 \pm 26$	$5.10 \pm 0.50$
<b>H<math>\beta</math> Broad</b>	<b><math>40.96 \pm 0.02</math></b>	<b><math>3053 \pm 87</math></b>	<b><math>1119 \pm 39</math></b>	<b><math>46.28 \pm 1.23</math></b>
[O III] 5007	$40.83 \pm 0.01$	$357 \pm 63$	$227 \pm 26$	$35.92 \pm 0.53$
He I Narrow	$39.14 \pm 0.22$	$325 \pm 63$	$137 \pm 25$	$1.02 \pm 0.32$
<b>He I Broad</b>	<b><math>40.36 \pm 0.05</math></b>	<b><math>3691 \pm 159</math></b>	<b><math>1567 \pm 67</math></b>	<b><math>16.93 \pm 1.09</math></b>
[O I] 6300	$39.54 \pm 0.08$	$325 \pm 63$	$137 \pm 25$	$2.92 \pm 0.37$
H $\alpha$ Narrow	$40.57 \pm 0.02$	$325 \pm 63$	$137 \pm 25$	$33.34 \pm 0.57$
<b>H<math>\alpha</math> Broad</b>	<b><math>41.62 \pm 0.01</math></b>	<b><math>2958 \pm 67</math></b>	<b><math>1367 \pm 49</math></b>	<b><math>378.55 \pm 2.89</math></b>
[N II] 6585	$40.50 \pm 0.02$	$325 \pm 63$	$137 \pm 25$	$28.69 \pm 0.53$
[S II] 6718	$39.97 \pm 0.04$	$325 \pm 63$	$137 \pm 25$	$8.72 \pm 0.44$
[S II] 6732	$39.92 \pm 0.04$	$325 \pm 63$	$137 \pm 25$	$7.89 \pm 0.45$

## Emission Summary

H $\alpha$ broad SNR	15.32
H $\beta$ broad SNR	4.96
H $\gamma$ broad SNR	1.76
AGN frac	0.38
Host frac	0.62
$\log L_{5100, \text{Host}}$	43.17
Fe II/H $\beta$	0.73
Fe II/[O III]	0.99

## Quality Flags

spurious_hab/hbb	0/0
15100	1
balmer	0
balmer_snr	1
hb_width	0
balmer_width	0