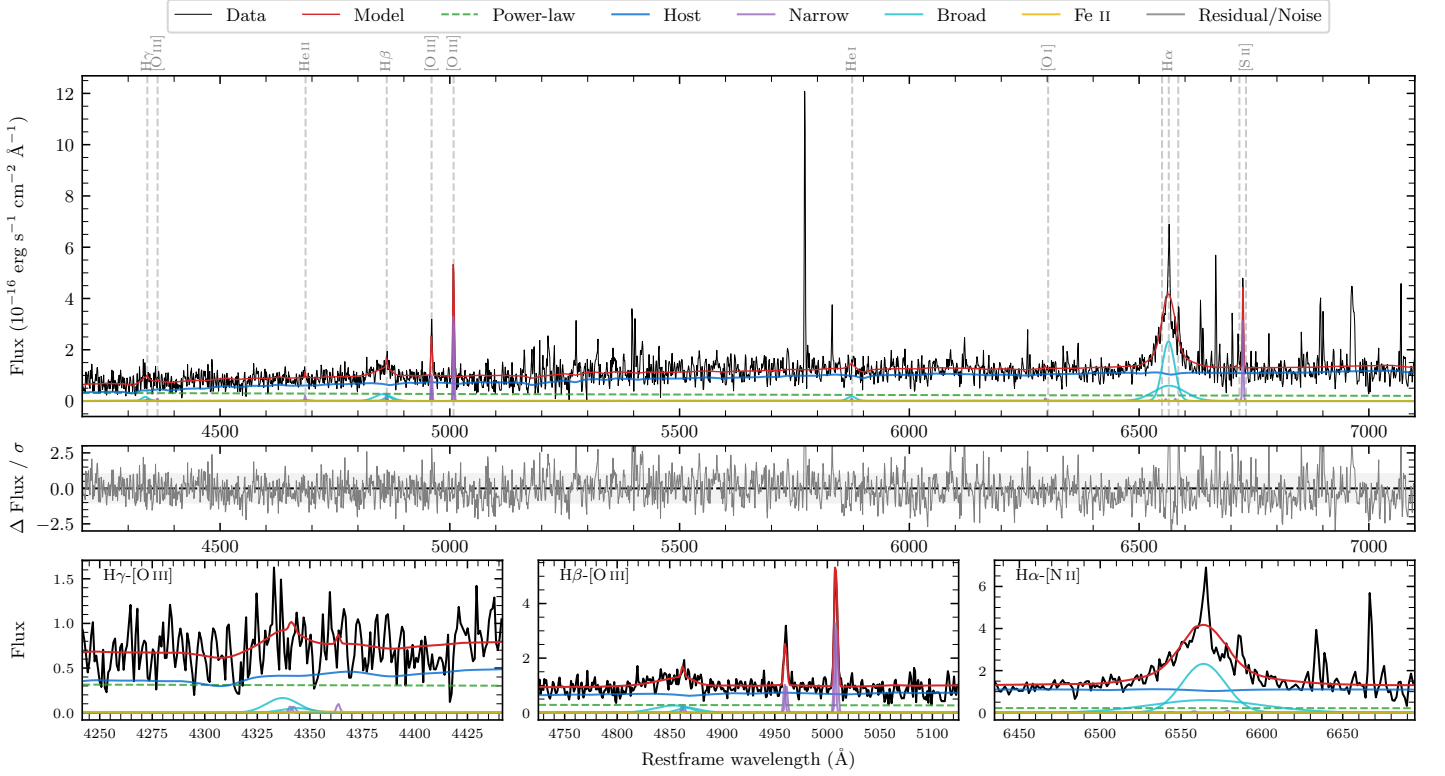
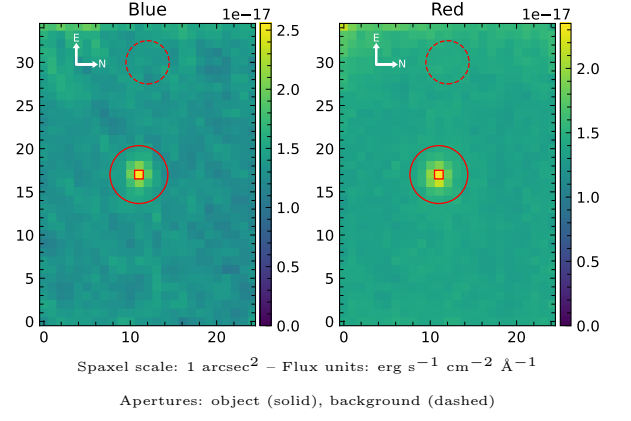


6dFGS gJ091214.8–050355

Spectrum ID	89398103_sp2	Spectrum type	Sy 1.5
Alt name	g0912148–050355	Quality flag	good
z	0.0921	AGN reference	6dFGS
RA, Dec	138.0614, –5.0651	MW $E(B - V)$	0.022
MJD	61139.39	Power law α_ν	-1.14 ± 0.08
SNR/Å B/R	2.8/3.4	$\log L_{5100, \text{AGN}}$	42.46 ± 0.16
Obs airmass	1.14	$\log H\beta_{\text{Br}}/[\text{O III}]$	-0.01 ± 0.10
SMSS ID	89398103	$\log M_{L5100}/M_\odot$	6.93 ± 0.17
Neighbour	None $< 15''$	$\log M_{\text{H}\alpha}/M_\odot$	6.62 ± 0.05
SMSS $\langle r_6^{\text{ap}} \rangle$	nan \pm nan	$\log M_{\text{H}\beta}/M_\odot$	6.88 ± 0.17
2MASS K_{ext}	nan \pm nan	$\log M_{[\text{O III}]} / M_\odot$	7.00 ± 0.16



Emission Line Measurements

Line	$\log L$ (erg s $^{-1}$)	FWHM (km s $^{-1}$)	σ (km s $^{-1}$)	EW (Å)
H γ Narrow	–	–	–	–
Hγ Broad	–	–	–	–
[O III] 4364	–	–	–	–
He II Narrow	39.05 ± 0.40	140 ± 62	55 ± 25	1.85 ± 1.38
He II Broad	–	–	–	–
H β Narrow	39.49 ± 0.27	223 ± 63	83 ± 25	5.19 ± 1.58
Hβ Broad	40.58 ± 0.09	2211 ± 405	867 ± 47	61.86 ± 6.74
[O III] 5007	40.58 ± 0.02	223 ± 63	83 ± 25	66.57 ± 1.98
He I Narrow	–	–	–	–
He I Broad	40.01 ± 0.27	1178 ± 62	500 ± 25	20.11 ± 7.51
[O I] 6300	–	–	–	–
H α Narrow	–	–	–	–
Hα Broad	41.48 ± 0.02	1647 ± 77	754 ± 40	655.86 ± 19.67
[N II] 6585	–	–	–	–
[S II] 6718	–	–	–	–
[S II] 6732	40.38 ± 0.05	140 ± 62	55 ± 25	53.07 ± 4.99

Emission Summary

H α broad SNR	7.68
H β broad SNR	1.14
H γ broad SNR	0.62
AGN frac	0.27
Host frac	0.73
$\log L_{5100, \text{Host}}$	42.89
Fe II/H β	–
Fe II/[O III]	–

Quality Flags

spurious_hab/hbb	0/0
15100	1
balmer	1
balmer_snr	2
hb_width	0
balmer_width	0