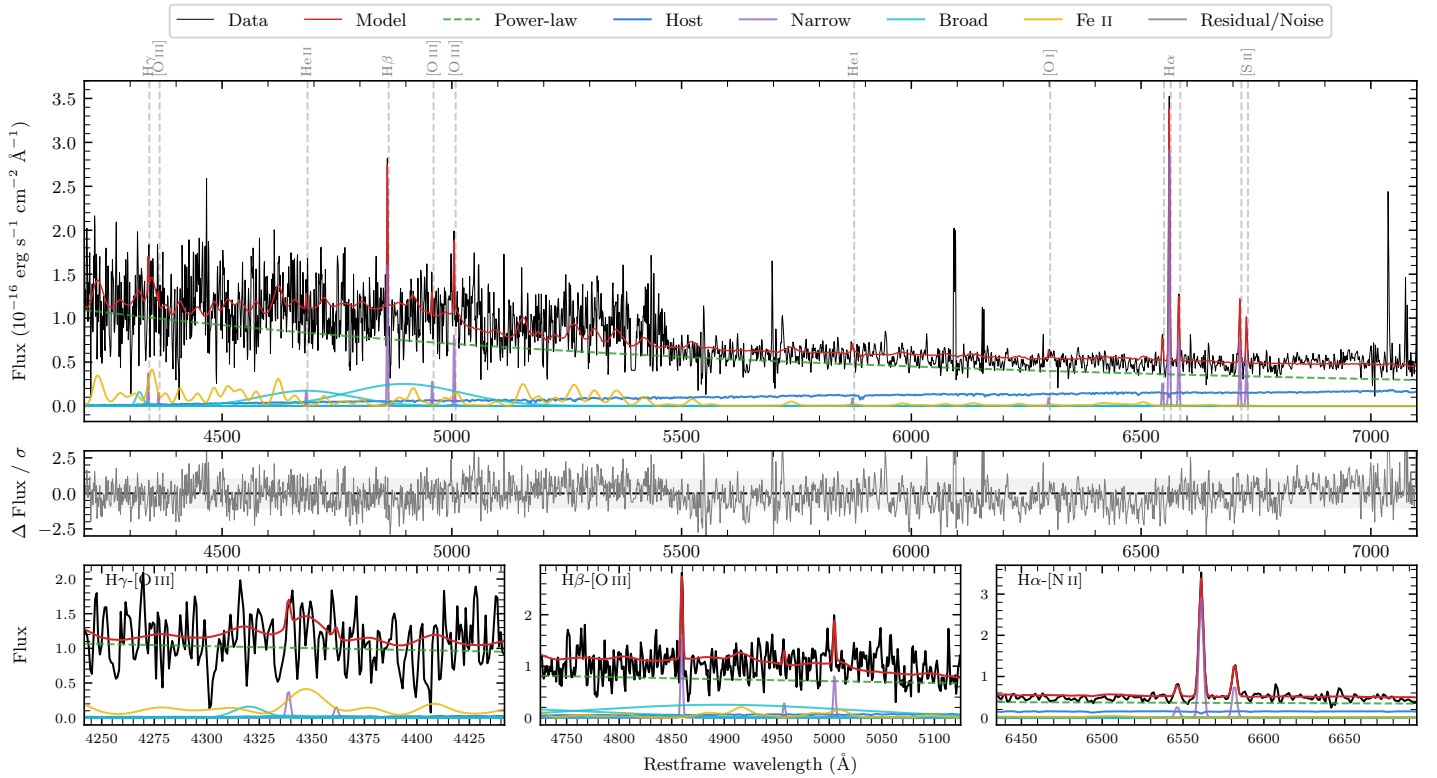
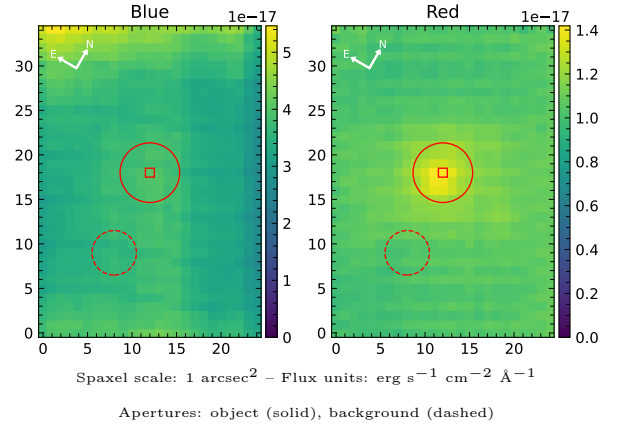


LEDA 1032658

Spectrum ID	89343398_sp1	Spectrum type	Bad
Alt name	g0923375-062719	Quality flag	bad_blue
z	0.0336	AGN reference	6dFGS
RA, Dec	140.9065, -6.4550	MW $E(B - V)$	0.026
MJD	60403.44	Power law α_ν	0.49 ± 0.01
SNR/ \AA B/R	3.2/5.5	$\log L_{5100, \text{AGN}}$	41.96 ± 0.01
Obs airmass	1.10	$\log H\beta_{\text{Br}}/[\text{O III}]$	—
SMSS ID	89343398	$\log M_{L5100}/M_\odot$	—
Neighbour	14.1", 2146587605	$\log M_{\text{H}\alpha}/M_\odot$	—
SMSS $\langle r_{6'' \text{ap}} \rangle$	18.07 ± 0.16	$\log M_{\text{H}\beta}/M_\odot$	—
2MASS K_{ext}	nan \pm nan	$\log M_{[\text{O III}]} / M_\odot$	—



Emission Line Measurements

Line	$\log L$ (erg s $^{-1}$)	FWHM (km s $^{-1}$)	σ (km s $^{-1}$)	EW (Angstroms)
H γ Narrow	—	—	—	—
Hγ Broad	—	—	—	—
[O III] 4364	—	—	—	—
He II Narrow	—	—	—	—
He II Broad	—	—	—	—
H β Narrow	39.11 ± 0.09	155 ± 62	228 ± 117	6.33 ± 1.78
Hβ Broad	—	—	—	—
[O III] 5007	38.86 ± 0.13	155 ± 62	228 ± 117	3.71 ± 1.85
He I Narrow	37.89 ± 0.36	155 ± 62	62 ± 25	0.62 ± 0.33
He I Broad	—	—	—	—
[O I] 6300	37.92 ± 0.30	155 ± 62	62 ± 25	0.79 ± 0.40
H α Narrow	39.43 ± 0.01	155 ± 62	62 ± 25	28.37 ± 0.49
Hα Broad	—	—	—	—
[N II] 6585	38.87 ± 0.04	155 ± 62	62 ± 25	7.91 ± 0.46
[S II] 6718	38.84 ± 0.05	155 ± 62	62 ± 25	7.75 ± 0.51
[S II] 6732	38.69 ± 0.07	155 ± 62	62 ± 25	5.51 ± 0.48

Emission Summary

H α broad SNR	0.00
H β broad SNR	0.00
H γ broad SNR	0.00
AGN frac	0.91
Host frac	0.09
$\log L_{5100, \text{Host}}$	40.94
Fe II/H β	—
Fe II/[O III]	—

Quality Flags

spurious_hab/hbb	0/1
15100	2
balmer	2
balmer_snr	2
hb_width	2
balmer_width	2