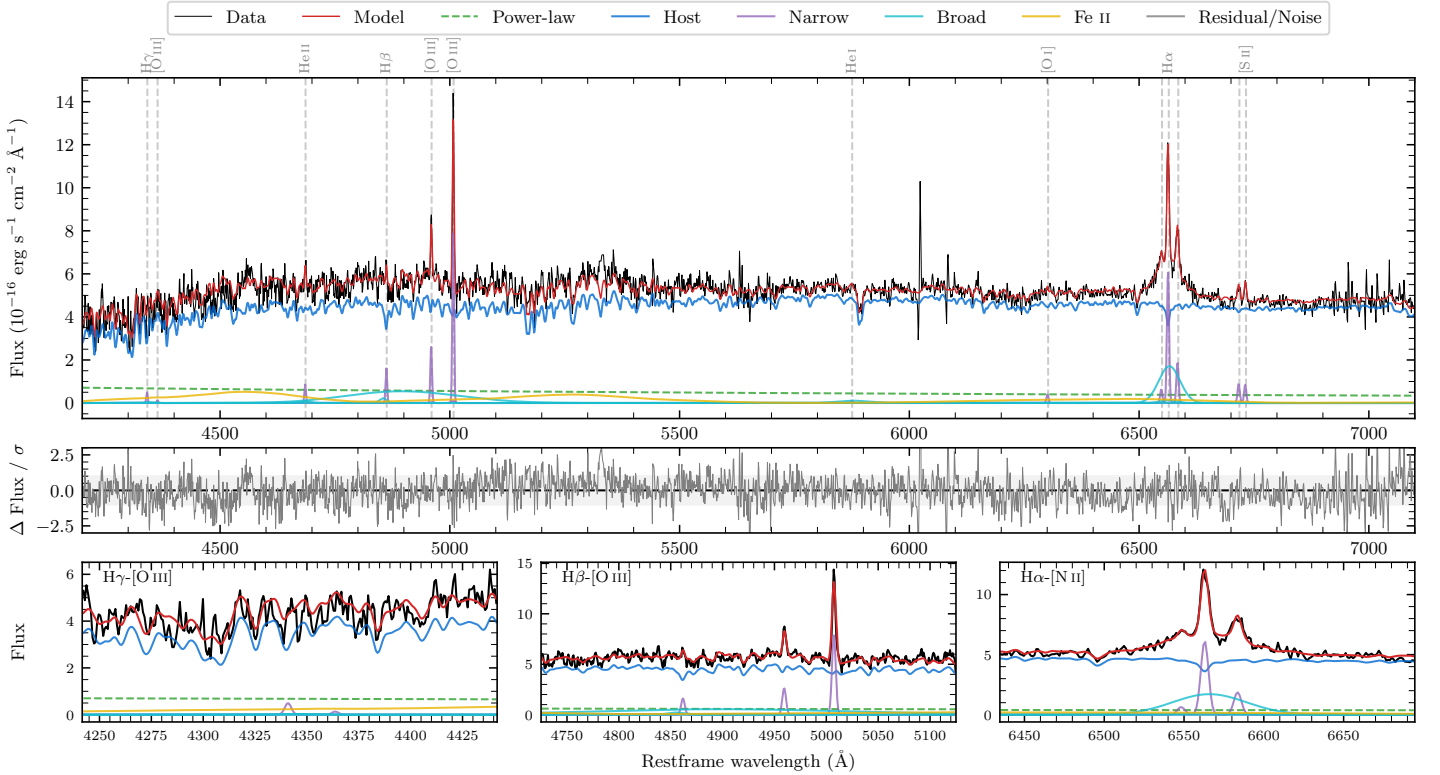
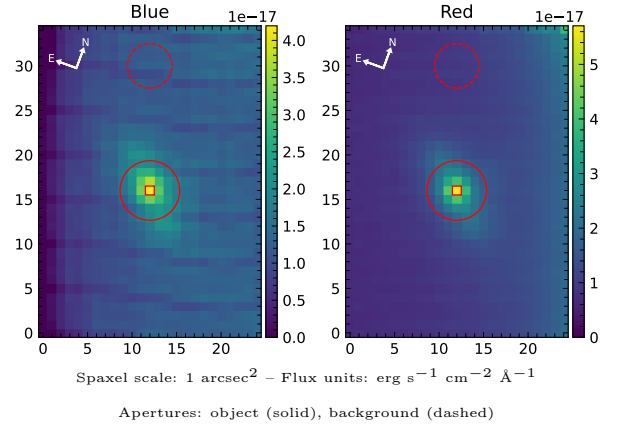


LEDA 1018194

Spectrum ID	89293843_sp1	Spectrum type	Sy 1.5+
Alt name	g0915324-072906	Quality flag	good
z	0.0462	AGN reference	6dFGS
RA, Dec	138.8849, -7.4849	MW $E(B - V)$	0.038
MJD	60383.49	Power law α_ν	-0.60 ± 0.16
SNR/ \AA B/R	12.8/19.4	$\log L_{5100, \text{AGN}}$	42.15 ± 0.05
Obs airmass	1.09	$\log H\beta_{\text{Br}}/[\text{O III}]$	< -0.30
SMSS ID	89293843	$\log M_{L5100}/M_\odot$	—
Neighbour	None $< 15''$	$\log M_{\text{H}\alpha}/M_\odot$	6.52 ± 0.06
SMSS $\langle r_6''_{\text{ap}} \rangle$	16.91 ± 0.03	$\log M_{\text{H}\beta}/M_\odot$	—
2MASS K_{ext}	12.81 ± 0.12	$\log M_{[\text{O III}]} / M_\odot$	—



Emission Line Measurements

Line	$\log L$ (erg s ⁻¹)	FWHM (km s ⁻¹)	σ (km s ⁻¹)	EW (Å)
H γ Narrow	39.03 ± 0.30	259 ± 63	114 ± 26	3.10 ± 1.90
Hγ Broad	—	—	—	—
[O III] 4364	—	—	—	—
He II Narrow	39.29 ± 0.17	258 ± 62	108 ± 25	6.27 ± 1.45
He II Broad	—	—	—	—
H β Narrow	39.59 ± 0.08	259 ± 63	115 ± 26	13.25 ± 2.03
Hβ Broad	< 39.99	—	—	—
[O III] 5007	40.29 ± 0.02	259 ± 63	115 ± 26	69.28 ± 2.83
He I Narrow	38.52 ± 0.48	258 ± 62	108 ± 25	1.46 ± 1.36
He I Broad	39.69 ± 0.21	4010 ± 62	1703 ± 25	21.96 ± 5.47
[O I] 6300	39.08 ± 0.22	258 ± 62	108 ± 25	5.96 ± 1.57
H α Narrow	40.29 ± 0.02	258 ± 62	108 ± 25	100.18 ± 2.18
Hα Broad	40.75 ± 0.02	2443 ± 75	915 ± 25	287.42 ± 5.60
[N II] 6585	39.77 ± 0.05	258 ± 62	108 ± 25	30.66 ± 1.88
[S II] 6718	39.46 ± 0.08	258 ± 62	108 ± 25	15.39 ± 1.60
[S II] 6732	39.44 ± 0.08	258 ± 62	108 ± 25	14.71 ± 1.93

Emission Summary

H α broad SNR	4.40
H β broad SNR	0.52
H γ broad SNR	0.00
AGN frac	0.11
Host frac	0.89
$\log L_{5100, \text{Host}}$	43.04
Fe II/H β	—
Fe II/[O III]	—

Quality Flags

spurious_hab/hbb	0/2
15100	2
balmer	2
balmer_snr	2
hb_width	2
balmer_width	2