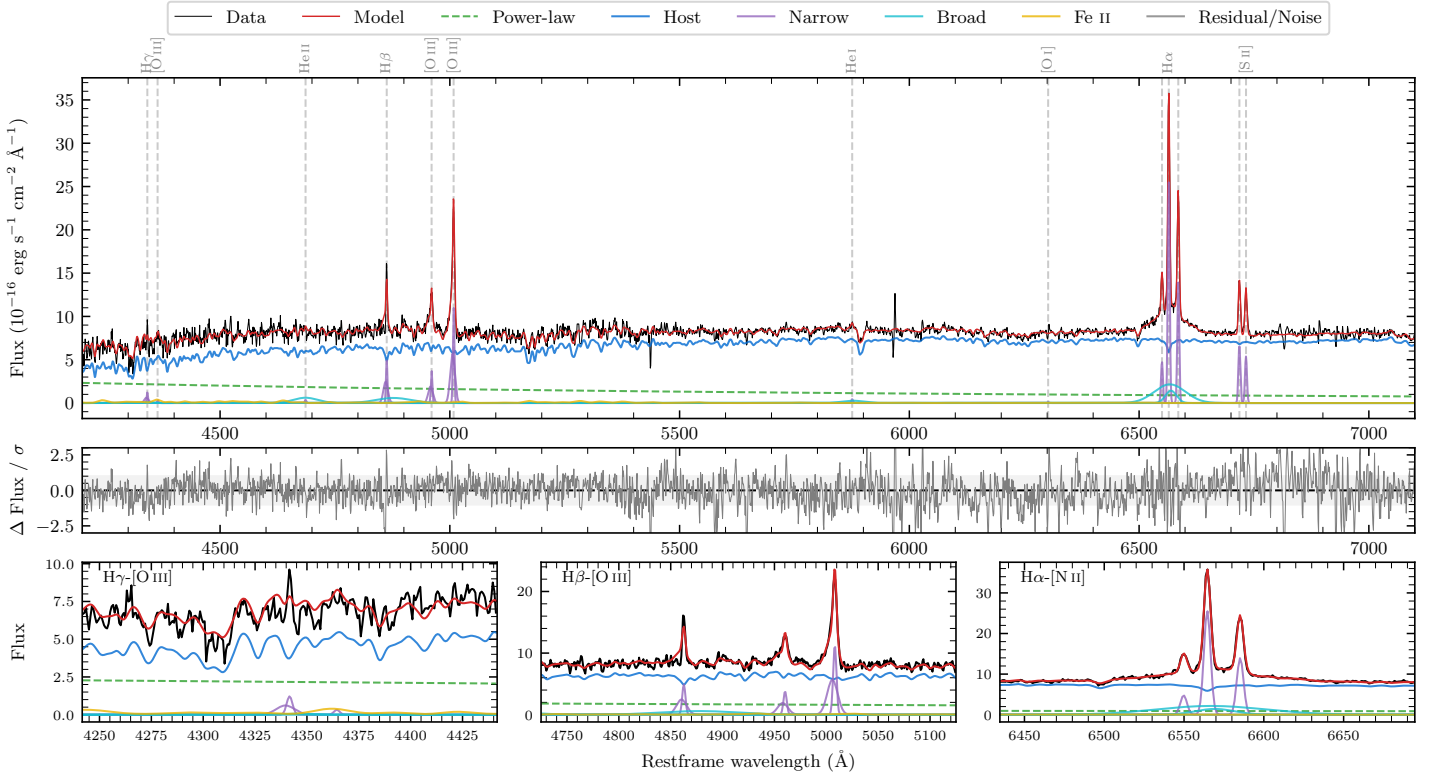
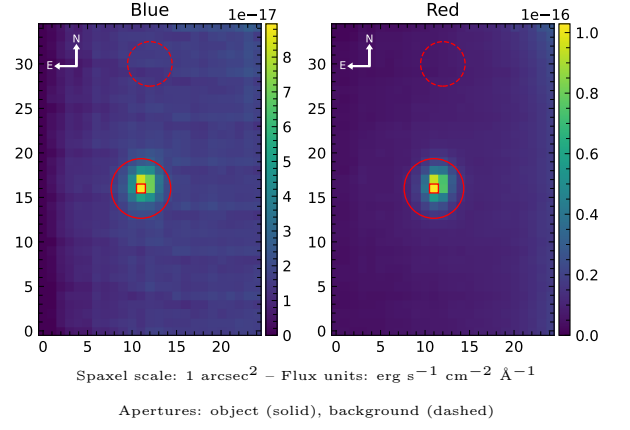


LEDA 1043734

Spectrum ID	89227181_sp1	Spectrum type	Sy 1.5
Alt name	g0910208-053058	Quality flag	good
z	0.0559	AGN reference	6dFGS
RA, Dec	137.5866, -5.5163	MW $E(B - V)$	0.025
MJD	60021.47	Power law α_ν	0.13 ± 0.29
SNR/ \AA B/R	11.9/29.7	$\log L_{5100, \text{AGN}}$	42.77 ± 0.05
Obs airmass	1.11	$\log H\beta_{\text{Br}} / [\text{O III}]$	-0.30 ± 0.08
SMSS ID	89227181	$\log M_{L5100} / M_\odot$	7.82 ± 0.05
Neighbour	None $< 15''$	$\log M_{\text{H}\alpha} / M_\odot$	6.78 ± 0.06
SMSS $\langle r_6''_{\text{ap}} \rangle$	16.38 ± 0.06	$\log M_{\text{H}\beta} / M_\odot$	7.67 ± 0.07
2MASS K_{ext}	12.52 ± 0.13	$\log M_{[\text{O III}]} / M_\odot$	7.93 ± 0.05



Emission Line Measurements

Line	$\log L$ (erg s^{-1})	FWHM (km s^{-1})	σ (km s^{-1})	EW (\AA)
H γ Narrow	39.94 ± 0.15	305 ± 63	252 ± 26	5.33 ± 1.25
Hγ Broad	—	—	—	—
[O III] 4364	—	—	—	—
He II Narrow	39.05 ± 0.44	228 ± 62	96 ± 25	0.82 ± 0.68
He II Broad	40.50 ± 0.10	3928 ± 63	1668 ± 25	22.91 ± 3.02
H β Narrow	40.59 ± 0.03	305 ± 63	252 ± 26	30.59 ± 1.36
Hβ Broad	40.66 ± 0.08	5254 ± 231	1955 ± 35	35.94 ± 3.71
[O III] 5007	40.96 ± 0.01	305 ± 63	252 ± 26	77.09 ± 1.46
He I Narrow	39.22 ± 0.21	228 ± 62	96 ± 25	1.95 ± 0.51
He I Broad	40.10 ± 0.11	2727 ± 65	1158 ± 26	14.70 ± 1.95
[O I] 6300	—	—	—	—
H α Narrow	41.03 ± 0.01	228 ± 62	96 ± 25	157.67 ± 0.82
Hα Broad	41.25 ± 0.01	2320 ± 136	1139 ± 25	265.47 ± 2.96
[N II] 6585	40.76 ± 0.01	228 ± 62	96 ± 25	86.85 ± 0.80
[S II] 6718	40.46 ± 0.01	228 ± 62	96 ± 25	44.64 ± 0.73
[S II] 6732	40.36 ± 0.01	228 ± 62	96 ± 25	35.86 ± 0.76

Emission Summary

H α broad SNR	5.73
H β broad SNR	1.06
H γ broad SNR	0.00
AGN frac	0.20
Host frac	0.80
$\log L_{5100, \text{Host}}$	43.36
Fe II/H β	0.83
Fe II/[O III]	0.41

Quality Flags

spurious_hab/hbb	0/0
15100	1
balmer	1
balmer_snr	2
hb_width	0
balmer_width	1