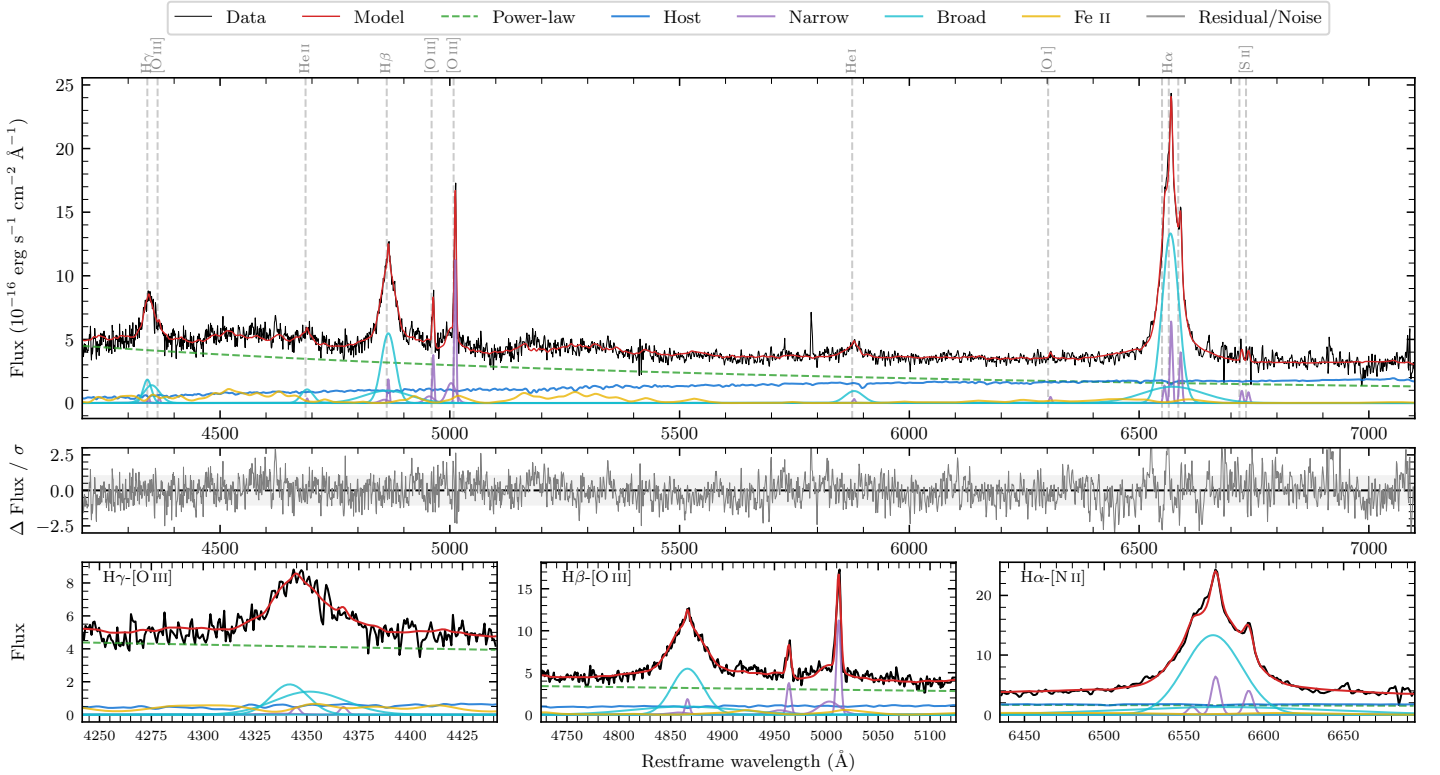
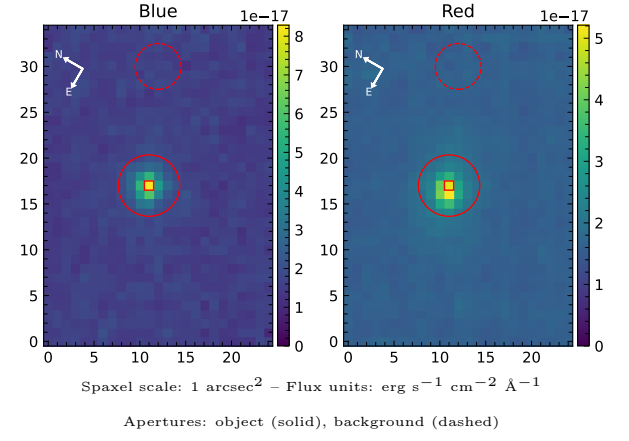


LEDA 3095849

Spectrum ID	89191150_sp1	Spectrum type	Sy 1.2
Alt name	g0902336-070004	Quality flag	good
z	0.0898	AGN reference	6dFGS
RA, Dec	135.6399, -7.0012	MW $E(B - V)$	0.031
MJD	60082.37	Power law α_ν	0.35 ± 0.12
SNR/ \AA B/R	9.0/10.5	$\log L_{5100, \text{AGN}}$	43.46 ± 0.02
Obs airmass	1.16	$\log H\beta_{\text{Br}}/[\text{O III}]$	0.54 ± 0.03
SMSS ID	89191150	$\log M_{L5100}/M_\odot$	7.45 ± 0.05
Neighbour	None $< 15''$	$\log M_{\text{H}\alpha}/M_\odot$	7.27 ± 0.04
SMSS $\langle r_6''_{\text{ap}} \rangle$	17.24 ± 0.15	$\log M_{\text{H}\beta}/M_\odot$	7.54 ± 0.05
2MASS K_{ext}	13.51 ± 0.19	$\log M_{[\text{O III}]} / M_\odot$	7.44 ± 0.05



Emission Line Measurements

Line	$\log L$ (erg s^{-1})	FWHM (km s^{-1})	σ (km s^{-1})	EW (\AA)
H γ Narrow	39.88 ± 0.38	312 ± 64	472 ± 32	0.92 ± 0.73
Hγ Broad	41.33 ± 0.03	1988 ± 218	803 ± 61	26.58 ± 1.07
[O III] 4364	39.66 ± 0.38	294 ± 63	123 ± 25	0.56 ± 0.41
He II Narrow	39.58 ± 0.37	294 ± 63	123 ± 25	0.55 ± 0.33
He II Broad	40.91 ± 0.08	1977 ± 377	839 ± 160	11.10 ± 0.91
H β Narrow	40.53 ± 0.11	312 ± 64	473 ± 32	5.37 ± 0.83
Hβ Broad	41.86 ± 0.02	2441 ± 134	1264 ± 111	113.03 ± 2.08
[O III] 5007	41.32 ± 0.02	312 ± 64	473 ± 32	35.67 ± 1.06
He I Narrow	39.62 ± 0.26	294 ± 63	123 ± 25	1.04 ± 0.40
He I Broad	41.02 ± 0.04	2374 ± 215	1008 ± 91	25.01 ± 1.35
[O I] 6300	39.84 ± 0.22	294 ± 63	123 ± 25	1.99 ± 0.65
H α Narrow	40.97 ± 0.03	294 ± 63	123 ± 25	30.16 ± 0.71
Hα Broad	42.24 ± 0.01	2043 ± 88	964 ± 61	561.63 ± 3.56
[N II] 6585	40.77 ± 0.05	294 ± 63	123 ± 25	19.24 ± 0.70
[S II] 6718	40.16 ± 0.10	294 ± 63	123 ± 25	4.88 ± 0.94
[S II] 6732	40.11 ± 0.09	294 ± 63	123 ± 25	4.37 ± 0.94

Emission Summary

H α broad SNR	26.77
H β broad SNR	11.81
H γ broad SNR	5.59
AGN frac	0.72
Host frac	0.28
$\log L_{5100, \text{Host}}$	43.05
Fe II/H β	0.61
Fe II/[O III]	2.08

Quality Flags

spurious_hab/hbb	0/0
15100	2
balmer	0
balmer_snr	0
hb_width	1
balmer_width	0