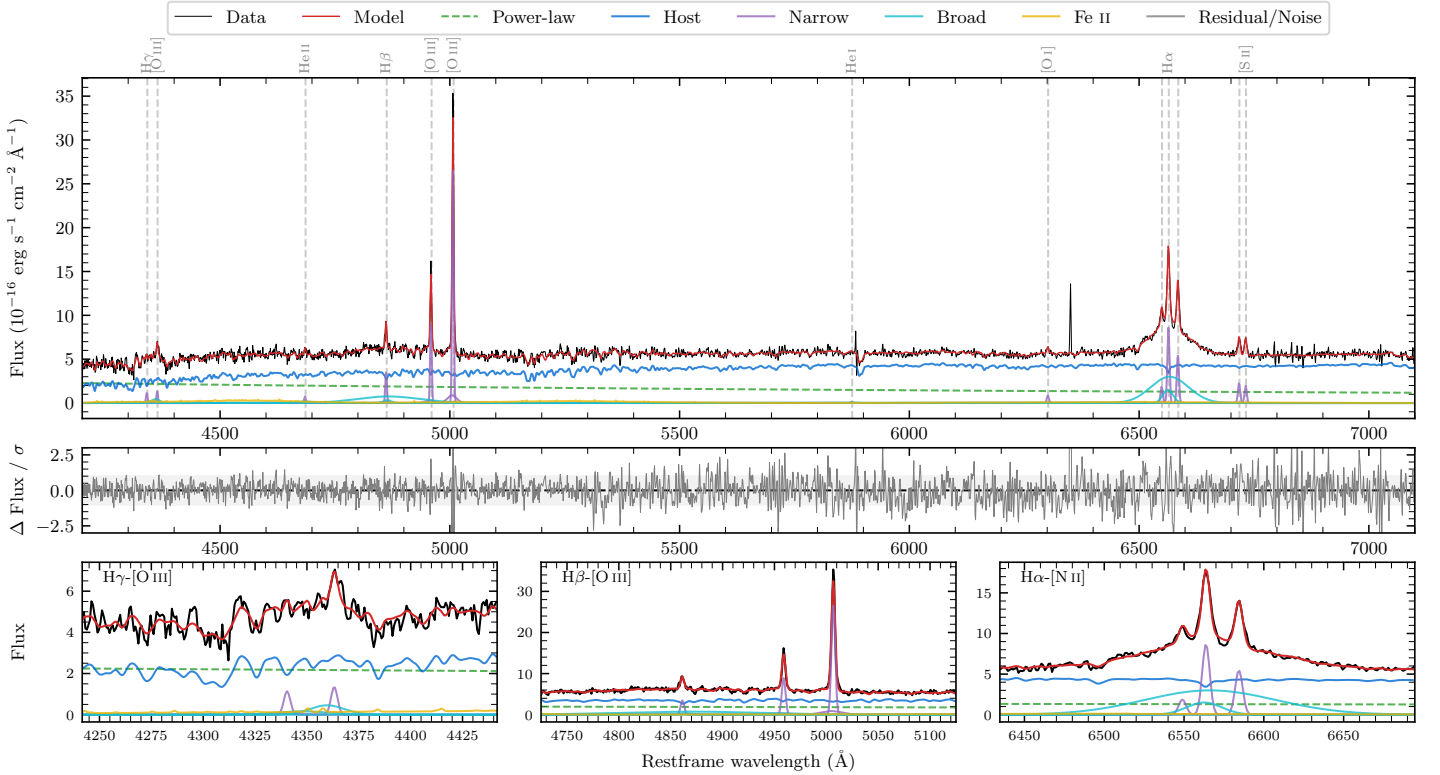
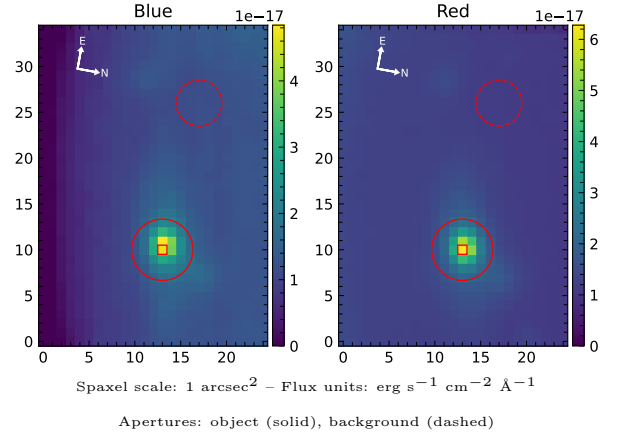


LEDA 139169

Spectrum ID	89172892_sp1	Spectrum type	Sy 1.5
Alt name	g0908055-082946	Quality flag	good
z	0.0705	AGN reference	6dFGS
RA, Dec	137.0229, -8.4960	MW $E(B - V)$	0.047
MJD	59671.51	Power law α_ν	-0.74 ± 0.28
SNR/ \AA B/R	9.4/20.1	$\log L_{5100, \text{AGN}}$	43.04 ± 0.06
Obs airmass	1.20	$\log H\beta_{\text{Br}}/[\text{O III}]$	-0.01 ± 0.04
SMSS ID	89172892	$\log M_{L5100}/M_\odot$	8.17 ± 0.26
Neighbour	14.3", 89172891	$\log M_{H\alpha}/M_\odot$	7.23 ± 0.05
SMSS $\langle r_6'' \text{ap} \rangle$	16.67 ± 0.06	$\log M_{H\beta}/M_\odot$	8.18 ± 0.26
2MASS K_{ext}	13.06 ± 0.14	$\log M_{[\text{O III}]} / M_\odot$	8.32 ± 0.26



Emission Line Measurements

Line	$\log L$ (erg s ⁻¹)	FWHM (km s ⁻¹)	σ (km s ⁻¹)	EW (Å)
H γ Narrow	39.84 ± 0.26	260 ± 63	261 ± 35	2.59 ± 1.43
Hγ Broad	40.34 ± 0.17	1558 ± 275	639 ± 77	7.27 ± 1.85
[O III] 4364	39.84 ± 0.20	256 ± 63	107 ± 25	2.61 ± 0.64
He II Narrow	39.60 ± 0.26	256 ± 63	107 ± 25	1.63 ± 0.62
He II Broad	40.11 ± 0.31	3536 ± 63	1502 ± 25	5.38 ± 2.24
H β Narrow	40.37 ± 0.07	260 ± 63	261 ± 35	10.20 ± 1.42
Hβ Broad	41.26 ± 0.04	6935 ± 2220	3549 ± 67	77.90 ± 4.20
[O III] 5007	41.27 ± 0.01	260 ± 63	261 ± 35	83.08 ± 1.63
He I Narrow	–	–	–	–
He I Broad	39.27 ± 0.45	1178 ± 62	500 ± 25	1.02 ± 0.97
[O I] 6300	39.80 ± 0.09	256 ± 63	107 ± 25	3.77 ± 0.47
H α Narrow	40.82 ± 0.01	256 ± 63	107 ± 25	42.34 ± 0.59
Hα Broad	41.66 ± 0.01	2911 ± 174	1476 ± 25	289.57 ± 2.45
[N II] 6585	40.62 ± 0.02	256 ± 63	107 ± 25	26.82 ± 0.57
[S II] 6718	40.25 ± 0.04	256 ± 63	107 ± 25	11.58 ± 0.63
[S II] 6732	40.19 ± 0.04	256 ± 63	107 ± 25	10.13 ± 0.59

Emission Summary

H α broad SNR	8.27
H β broad SNR	2.01
H γ broad SNR	1.16
AGN frac	0.35
Host frac	0.65
$\log L_{5100, \text{Host}}$	43.31
Fe II/H β	0.56
Fe II/[O III]	0.55

Quality Flags

spurious_hab/hbb	0/0
15100	1
balmer	1
balmer_snr	1
hb_width	1
balmer_width	1