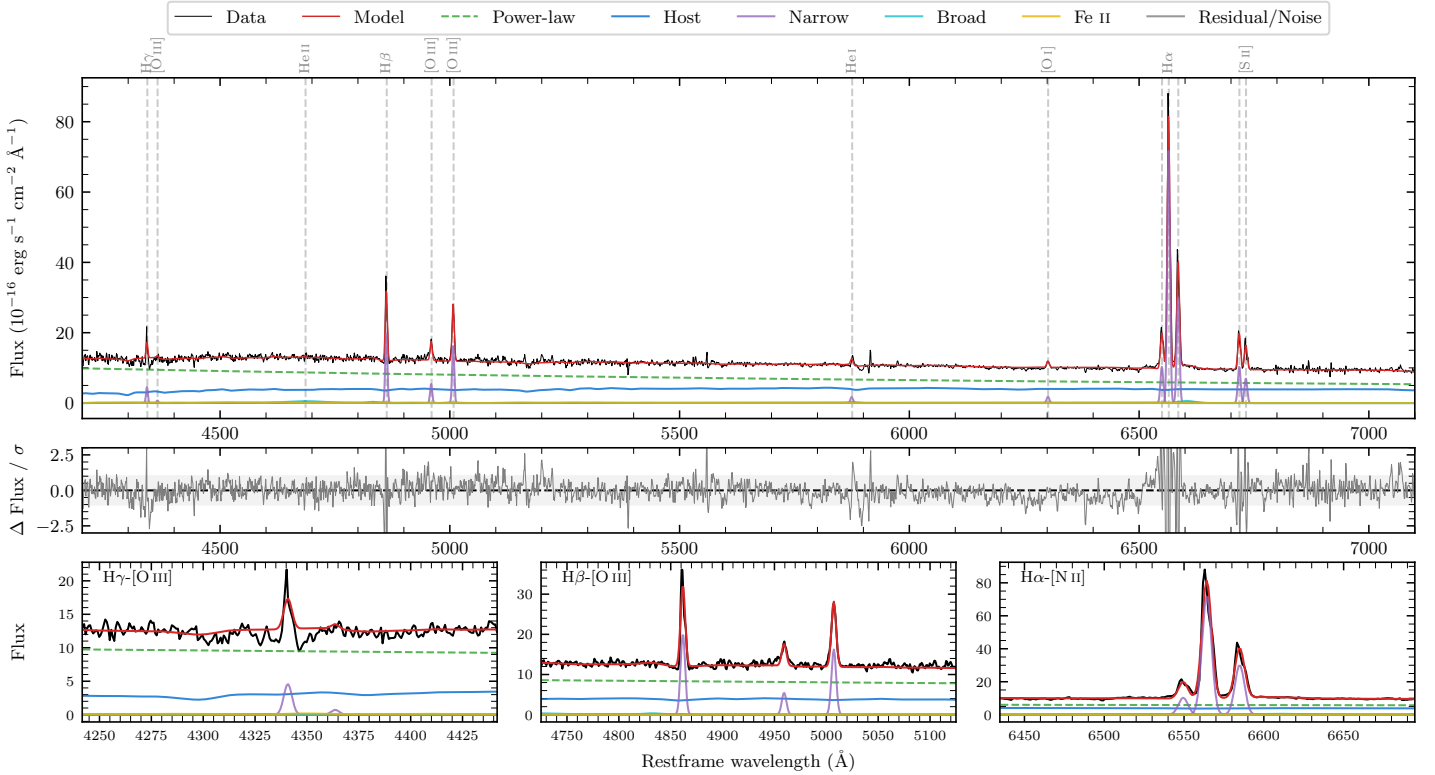
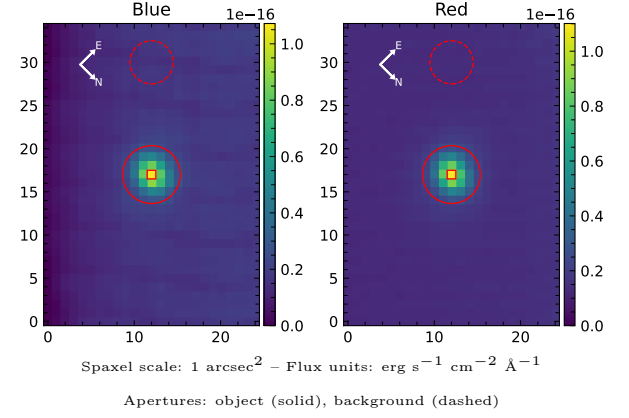


LEDA 3095922

Spectrum ID	88997017_sp1	Spectrum type	Sy 2
Alt name	g1011590-163633	Quality flag	good
z	0.0653	AGN reference	6dFGS
RA, Dec	152.9960, -16.6091	MW $E(B - V)$	0.045
MJD	60413.4	Power law α_ν	-0.83 ± 0.08
SNR/ \AA B/R	12.3/15.6	$\log L_{5100, \text{AGN}}$	43.62 ± 0.02
Obs airmass	1.07	$\log H\beta_{\text{Br}}/[\text{O III}]$	—
SMSS ID	88997017	$\log M_{L5100}/M_\odot$	—
Neighbour	None $< 15''$	$\log M_{\text{H}\alpha}/M_\odot$	—
SMSS $\langle r_6''_{\text{ap}} \rangle$	16.06 ± 0.02	$\log M_{\text{H}\beta}/M_\odot$	—
2MASS K_{ext}	12.65 ± 0.11	$\log M_{[\text{O III}]} / M_\odot$	—



Emission Line Measurements

Line	$\log L$ (erg s^{-1})	FWHM (km s^{-1})	σ (km s^{-1})	EW (\AA)
H γ Narrow	40.41 ± 0.09	322 ± 62	150 ± 28	2.59 ± 0.37
Hγ Broad	—	—	—	—
[O III] 4364	39.60 ± 0.39	324 ± 62	135 ± 25	0.41 ± 0.26
He II Narrow	39.53 ± 0.39	324 ± 62	135 ± 25	0.38 ± 0.26
He II Broad	40.81 ± 0.13	6517 ± 62	2767 ± 25	7.22 ± 1.17
H β Narrow	41.10 ± 0.02	322 ± 62	150 ± 28	14.52 ± 0.41
Hβ Broad	—	—	—	—
[O III] 5007	41.02 ± 0.02	322 ± 62	150 ± 28	12.50 ± 0.42
He I Narrow	40.10 ± 0.15	324 ± 62	135 ± 25	1.81 ± 0.26
He I Broad	39.86 ± 0.38	1178 ± 62	500 ± 25	1.06 ± 0.49
[O I] 6300	40.14 ± 0.08	324 ± 62	135 ± 25	2.19 ± 0.25
H α Narrow	41.77 ± 0.01	324 ± 62	135 ± 25	96.97 ± 0.40
Hα Broad	—	—	—	—
[N II] 6585	41.40 ± 0.01	324 ± 62	135 ± 25	41.09 ± 0.35
[S II] 6718	40.94 ± 0.02	324 ± 62	135 ± 25	14.79 ± 0.32
[S II] 6732	40.77 ± 0.03	324 ± 62	135 ± 25	9.94 ± 0.35

Emission Summary

H α broad SNR	0.97
H β broad SNR	0.00
H γ broad SNR	0.00
AGN frac	0.67
Host frac	0.33
$\log L_{5100, \text{Host}}$	43.30
Fe II/H β	—
Fe II/[O III]	0.46

Quality Flags

spurious_hab/hbb	0/0
15100	0
balmer	2
balmer_snr	2
hb_width	2
balmer_width	2