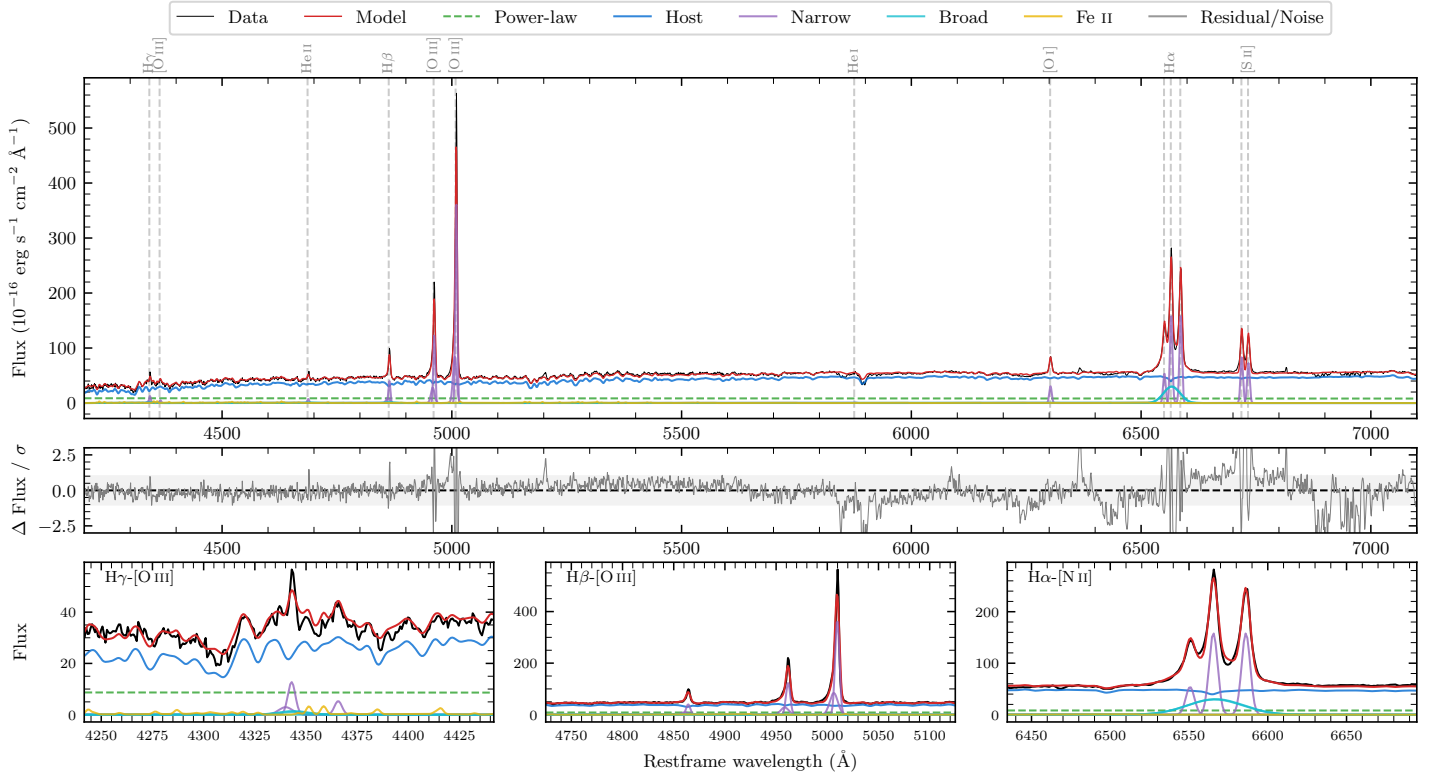
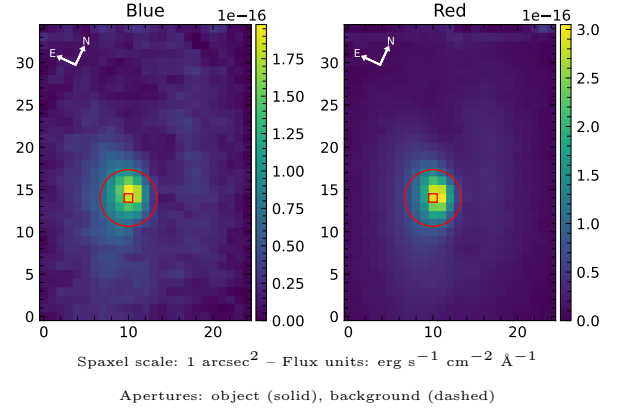


# NGC 2992

Spectrum ID	88875404_sp2	Spectrum type	Sy 1.8+
Alt name	g0945420-141935	Quality flag	good
$z$	0.0079	AGN reference	6dFGS
RA, Dec	146.4247, -14.3269	MW $E(B - V)$	0.052
MJD	60650.62	Power law $\alpha_\nu$	$-1.87 \pm 0.11$
SNR/ $\text{\AA}$ B/R	9.6/22.5	$\log L_{5100, \text{AGN}}$	$41.78 \pm 0.07$
Obs airmass	1.75	$\log H\beta_{\text{Br}}/[\text{O III}]$	$< -1.11$
SMSS ID	88875404	$\log M_{L5100}/M_\odot$	—
Neighbour	1.8", 2145877596	$\log M_{H\alpha}/M_\odot$	$6.18 \pm 0.06$
SMSS $\langle r_6''_{\text{ap}} \rangle$	$14.35 \pm 0.10$	$\log M_{H\beta}/M_\odot$	—
2MASS $K_{\text{ext}}$	$8.60 \pm 0.03$	$\log M_{[\text{O III}]} / M_\odot$	—



## Emission Line Measurements

Line	$\log L$ ( $\text{erg s}^{-1}$ )	FWHM ( $\text{km s}^{-1}$ )	$\sigma$ ( $\text{km s}^{-1}$ )	EW ( $\text{\AA}$ )
H $\gamma$ Narrow	$39.06 \pm 0.18$	$331 \pm 63$	$190 \pm 25$	$9.63 \pm 2.04$
<b>H<math>\gamma</math> Broad</b>	—	—	—	—
[O III] 4364	$38.53 \pm 0.34$	$295 \pm 63$	$125 \pm 25$	$2.83 \pm 1.47$
He II Narrow	$38.70 \pm 0.22$	$295 \pm 63$	$125 \pm 25$	$4.27 \pm 1.11$
<b>He II Broad</b>	<b><math>38.59 \pm 0.45</math></b>	<b><math>1462 \pm 63</math></b>	<b><math>621 \pm 25</math></b>	<b><math>3.31 \pm 2.39</math></b>
H $\beta$ Narrow	$39.61 \pm 0.04$	$331 \pm 63$	$190 \pm 25$	$34.49 \pm 1.58$
<b>H<math>\beta</math> Broad</b>	$< 39.46$	—	—	—
[O III] 5007	$40.58 \pm 0.01$	$331 \pm 63$	$190 \pm 25$	$326.09 \pm 1.92$
He I Narrow	—	—	—	—
<b>He I Broad</b>	—	—	—	—
[O I] 6300	$39.45 \pm 0.02$	$295 \pm 63$	$125 \pm 25$	$24.78 \pm 0.76$
H $\alpha$ Narrow	$40.18 \pm 0.01$	$295 \pm 63$	$125 \pm 25$	$133.78 \pm 1.11$
<b>H<math>\alpha</math> Broad</b>	<b><math>40.56 \pm 0.01</math></b>	<b><math>1896 \pm 63</math></b>	<b><math>693 \pm 25</math></b>	<b><math>324.83 \pm 2.20</math></b>
[N II] 6585	$40.18 \pm 0.01$	$295 \pm 63$	$125 \pm 25$	$133.95 \pm 1.04$
[S II] 6718	$39.91 \pm 0.01$	$295 \pm 63$	$125 \pm 25$	$72.54 \pm 0.88$
[S II] 6732	$39.85 \pm 0.01$	$295 \pm 63$	$125 \pm 25$	$63.23 \pm 0.88$

## Emission Summary

H $\alpha$ broad SNR	12.20
H $\beta$ broad SNR	0.65
H $\gamma$ broad SNR	0.00
AGN frac	0.19
Host frac	0.81
$\log L_{5100, \text{Host}}$	42.40
Fe II/H $\beta$	—
Fe II/[O III]	0.08

## Quality Flags

spurious_hab/hbb	0/0
15100	2
balmer	2
balmer_snr	2
hb_width	2
balmer_width	2