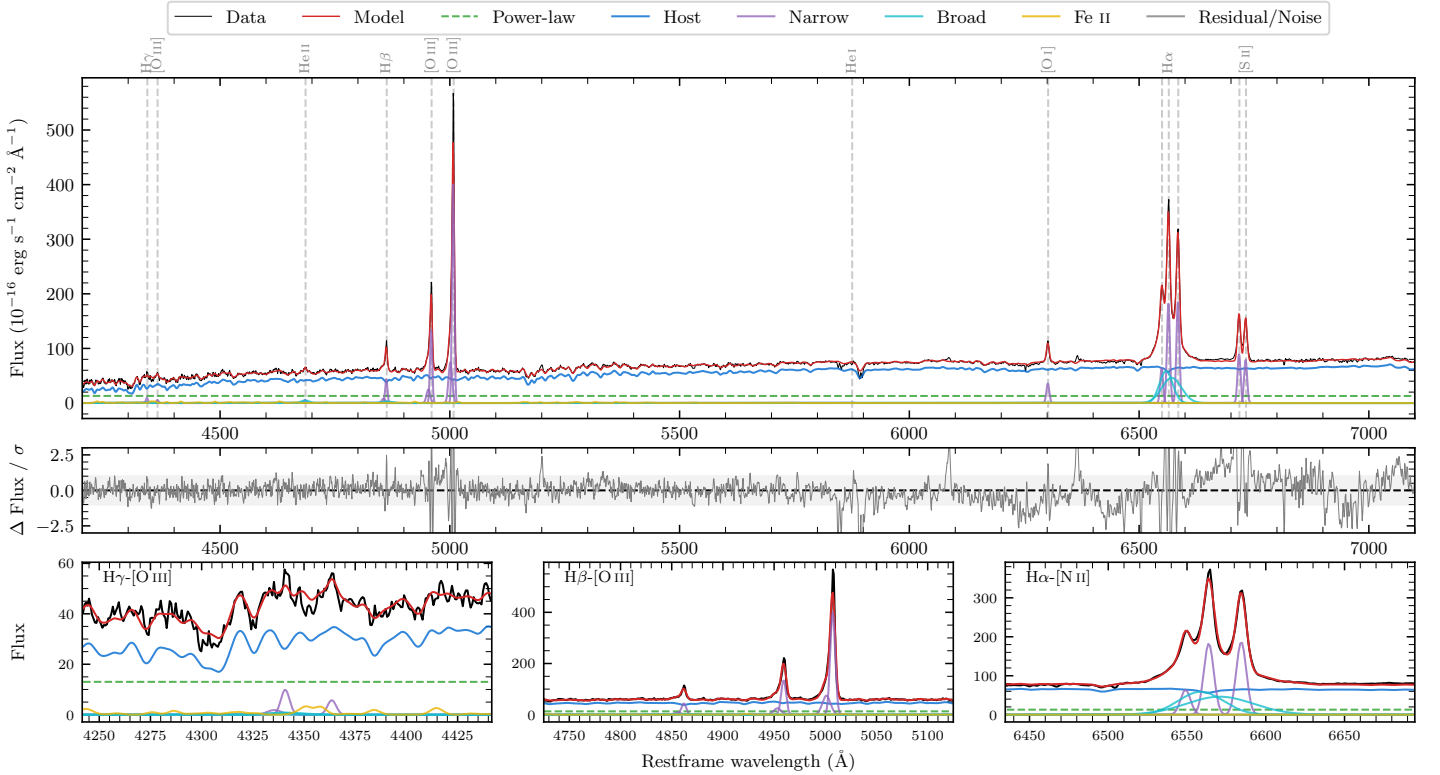
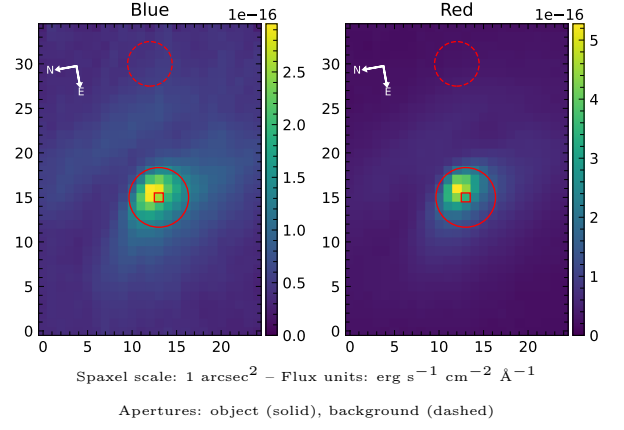


NGC 2992

Spectrum ID	88875404_sp1	Spectrum type	Sy 1.8
Alt name	g0945420-141935	Quality flag	good
z	0.0079	AGN reference	6dFGS
RA, Dec	146.4247, -14.3269	MW $E(B - V)$	0.052
MJD	60263.72	Power law α_ν	-1.98 ± 0.02
SNR/ \AA B/R	15.1/34.3	$\log L_{5100, \text{AGN}}/M_\odot$	41.96 ± 0.02
Obs airmass	1.38	$\log H\beta_{\text{Br}}/[\text{O III}]$	-1.38 ± 0.15
SMSS ID	88875404	$\log M_{L5100}/M_\odot$	6.32 ± 0.07
Neighbour	1.8", 2145877596	$\log M_{\text{H}\alpha}/M_\odot$	6.34 ± 0.06
SMSS $\langle r_6''_{\text{ap}} \rangle$	14.35 ± 0.10	$\log M_{\text{H}\beta}/M_\odot$	5.89 ± 0.12
2MASS K_{ext}	8.60 ± 0.03	$\log M_{[\text{O III}]} / M_\odot$	6.63 ± 0.06



Emission Line Measurements

Line	$\log L$ (erg s ⁻¹)	FWHM (km s ⁻¹)	σ (km s ⁻¹)	EW (Å)
H γ Narrow	38.97 ± 0.21	372 ± 62	231 ± 25	5.28 ± 1.19
Hγ Broad	—	—	—	—
[O III] 4364	38.63 ± 0.28	346 ± 62	145 ± 25	2.37 ± 0.93
He II Narrow	38.68 ± 0.26	346 ± 62	145 ± 25	2.70 ± 0.68
He II Broad	39.15 ± 0.18	1292 ± 63	549 ± 25	7.94 ± 1.37
H β Narrow	39.67 ± 0.04	372 ± 62	232 ± 25	26.41 ± 0.87
Hβ Broad	39.26 ± 0.15	1396 ± 80	498 ± 31	8.73 ± 1.37
[O III] 5007	40.64 ± 0.01	372 ± 62	232 ± 25	246.77 ± 1.09
He I Narrow	—	—	—	—
He I Broad	—	—	—	—
[O I] 6300	39.58 ± 0.02	346 ± 62	145 ± 25	21.53 ± 0.51
H α Narrow	40.30 ± 0.01	346 ± 62	145 ± 25	113.52 ± 0.72
Hα Broad	40.80 ± 0.01	1913 ± 65	755 ± 25	357.52 ± 1.41
[N II] 6585	40.32 ± 0.01	346 ± 62	145 ± 25	116.60 ± 0.64
[S II] 6718	40.01 ± 0.01	346 ± 62	145 ± 25	57.27 ± 0.54
[S II] 6732	39.95 ± 0.01	346 ± 62	145 ± 25	50.59 ± 0.54

Emission Summary

H α broad SNR	23.93
H β broad SNR	1.31
H γ broad SNR	0.54
AGN frac	0.22
Host frac	0.78
$\log L_{5100, \text{Host}}$	42.50
Fe II/H β	2.32
Fe II/[O III]	0.08

Quality Flags

spurious_hab/hbb	0/0
15100	1
balmer	1
balmer_snr	2
hb_width	0
balmer_width	2