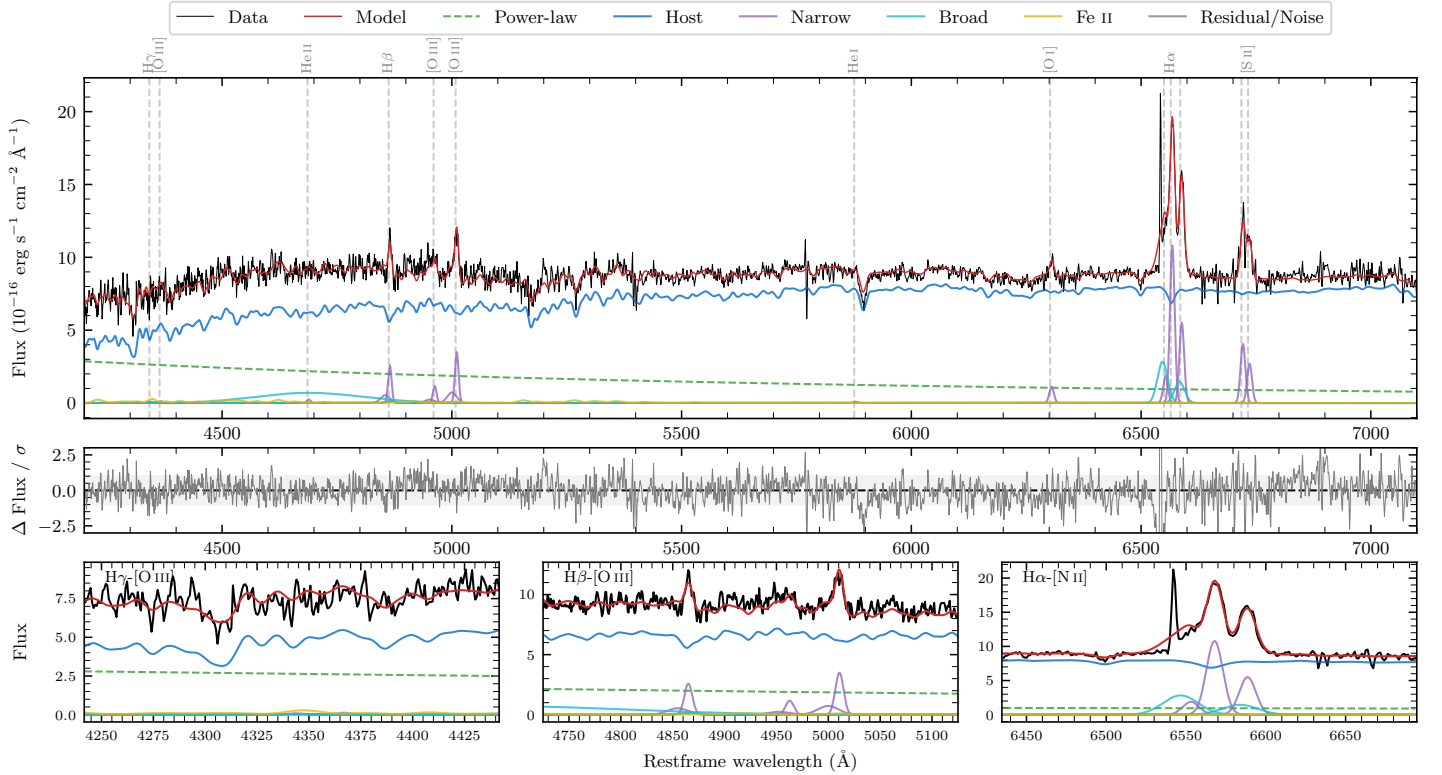
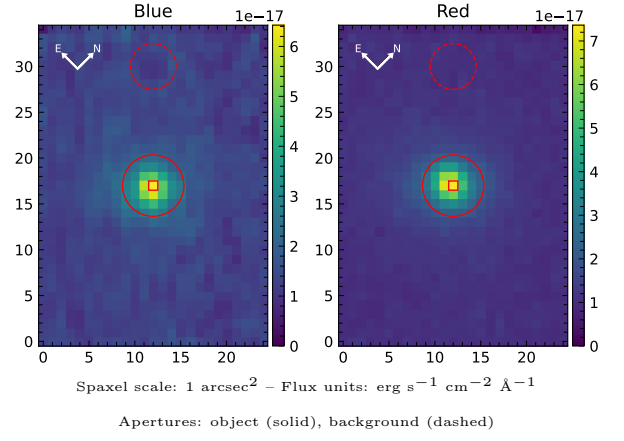


LEDA 101651

Spectrum ID	8884648_sp1	Spectrum type	Bad
Alt name	LCRS B002322.3-421546	Quality flag	bad_all
z	0.0925	AGN reference	PGC
RA, Dec	6.4575, -41.9859	MW $E(B - V)$	0.006
MJD	60905.69	Power law α_ν	0.48 ± 0.02
SNR/ \AA B/R	12.6/21.9	$\log L_{5100, \text{AGN}}$	43.28 ± 0.02
Obs airmass	1.02	$\log H\beta_{\text{Br}}/[\text{O III}]$	—
SMSS ID	8884648	$\log M_{L5100}/M_\odot$	—
Neighbour	None $< 15''$	$\log M_{\text{H}\alpha}/M_\odot$	—
SMSS $\langle r_6''_{\text{ap}} \rangle$	16.24 ± 0.05	$\log M_{\text{H}\beta}/M_\odot$	—
2MASS K_{ext}	11.81 ± 0.10	$\log M_{[\text{O III}]} / M_\odot$	—



Emission Line Measurements

Line	$\log L$ (erg s $^{-1}$)	FWHM (km s $^{-1}$)	σ (km s $^{-1}$)	EW (Angstroms)
H γ Narrow	—	—	—	—
Hγ Broad	—	—	—	—
[O III] 4364	—	—	—	—
He II Narrow	39.75 ± 0.44	556 ± 62	235 ± 25	1.20 ± 1.04
He II Broad	41.68 ± 0.05	17661 ± 62	7500 ± 25	103.48 ± 6.60
H β Narrow	40.94 ± 0.08	608 ± 66	505 ± 41	20.78 ± 1.79
Hβ Broad	—	—	—	—
[O III] 5007	41.09 ± 0.04	608 ± 66	505 ± 41	31.11 ± 2.04
He I Narrow	—	—	—	—
He I Broad	—	—	—	—
[O I] 6300	40.51 ± 0.08	556 ± 62	235 ± 25	14.51 ± 1.57
H α Narrow	41.69 ± 0.01	556 ± 62	235 ± 25	161.57 ± 1.78
Hα Broad	—	—	—	—
[N II] 6585	41.40 ± 0.02	556 ± 62	235 ± 25	83.36 ± 1.73
[S II] 6718	41.10 ± 0.02	556 ± 62	235 ± 25	65.75 ± 2.12
[S II] 6732	40.92 ± 0.03	556 ± 62	235 ± 25	44.38 ± 2.10

Emission Summary

H α broad SNR	0.00
H β broad SNR	0.00
H γ broad SNR	0.00
AGN frac	0.21
Host frac	0.79
$\log L_{5100, \text{Host}}$	43.85
Fe II/H β	—
Fe II/[O III]	0.73

Quality Flags

spurious_hab/hbb	1/0
15100	2
balmer	2
balmer_snr	2
hb_width	2
balmer_width	2