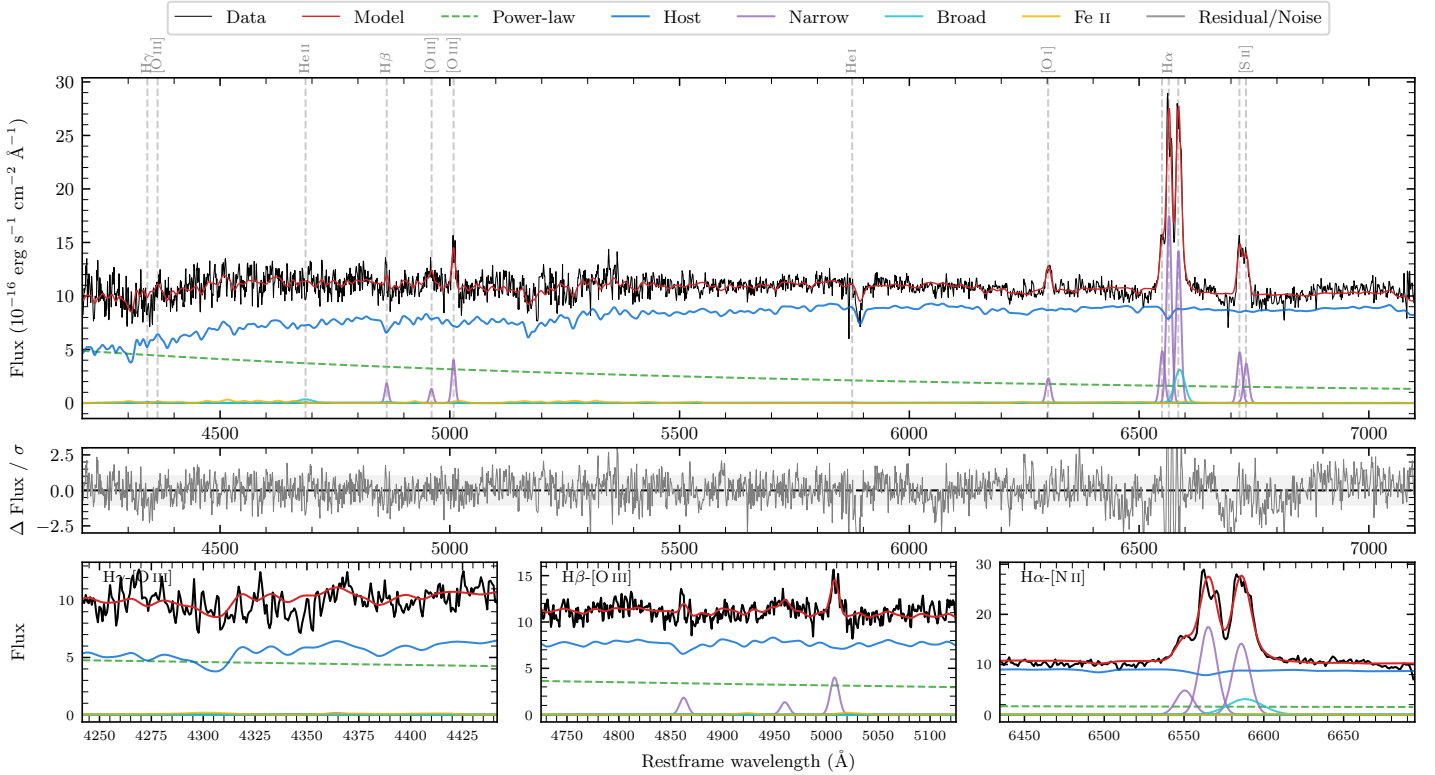
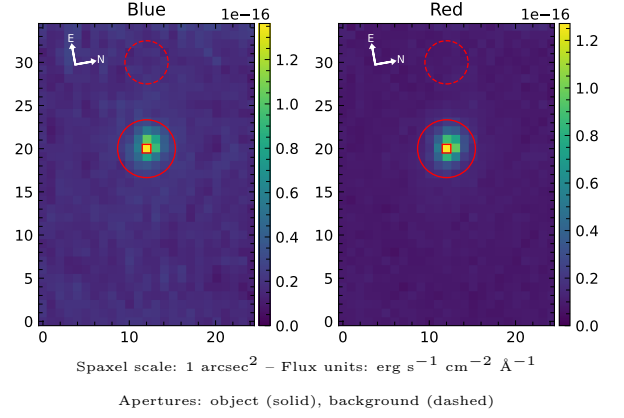


LEDA 892717

Spectrum ID	87985404_sp1	Spectrum type	Sy 2
Alt name	IRAS 09199-1637	Quality flag	good
z	0.0739	AGN reference	M+2007
RA, Dec	140.5715, -16.8442	MW $E(B - V)$	0.045
MJD	61026.69	Power law α_ν	0.49 ± 0.01
SNR/ \AA B/R	10.6/19.4	$\log L_{5100, \text{AGN}}$	43.31 ± 0.02
Obs airmass	1.07	$\log H\beta_{\text{Br}}/[\text{O III}]$	—
SMSS ID	87985404	$\log M_{L5100}/M_\odot$	—
Neighbour	10.4", 2144448077	$\log M_{\text{H}\alpha}/M_\odot$	—
SMSS $\langle r_{6''}^{\text{ap}} \rangle$	15.97 ± 0.03	$\log M_{\text{H}\beta}/M_\odot$	—
2MASS K_{ext}	12.25 ± 0.08	$\log M_{[\text{O III}]} / M_\odot$	—



Emission Line Measurements

Line	$\log L$ (erg s $^{-1}$)	FWHM (km s $^{-1}$)	σ (km s $^{-1}$)	EW (Angstrom)
H γ Narrow	—	—	—	—
Hγ Broad	—	—	—	—
[O III] 4364	—	—	—	—
He II Narrow	—	—	—	—
He II Broad	40.30 ± 0.27	2405 ± 62	1021 ± 25	4.05 ± 1.77
H β Narrow	40.44 ± 0.12	583 ± 63	264 ± 30	6.05 ± 1.28
Hβ Broad	—	—	—	—
[O III] 5007	40.79 ± 0.05	583 ± 63	264 ± 30	14.62 ± 1.64
He I Narrow	—	—	—	—
He I Broad	—	—	—	—
[O I] 6300	40.63 ± 0.04	579 ± 62	245 ± 25	18.15 ± 1.08
H α Narrow	41.60 ± 0.01	579 ± 62	245 ± 25	158.27 ± 1.47
Hα Broad	—	—	—	—
[N II] 6585	41.51 ± 0.01	579 ± 62	245 ± 25	129.45 ± 1.48
[S II] 6718	40.97 ± 0.02	579 ± 62	245 ± 25	46.27 ± 1.54
[S II] 6732	40.87 ± 0.03	579 ± 62	245 ± 25	36.37 ± 1.64

Emission Summary

H α broad SNR	0.00
H β broad SNR	0.00
H γ broad SNR	0.00
AGN frac	0.28
Host frac	0.72
$\log L_{5100, \text{Host}}$	43.72
Fe II/H β	—
Fe II/[O III]	0.96

Quality Flags

spurious_hab/hbb	1/0
15100	2
balmer	2
balmer_snr	2
hb_width	2
balmer_width	2