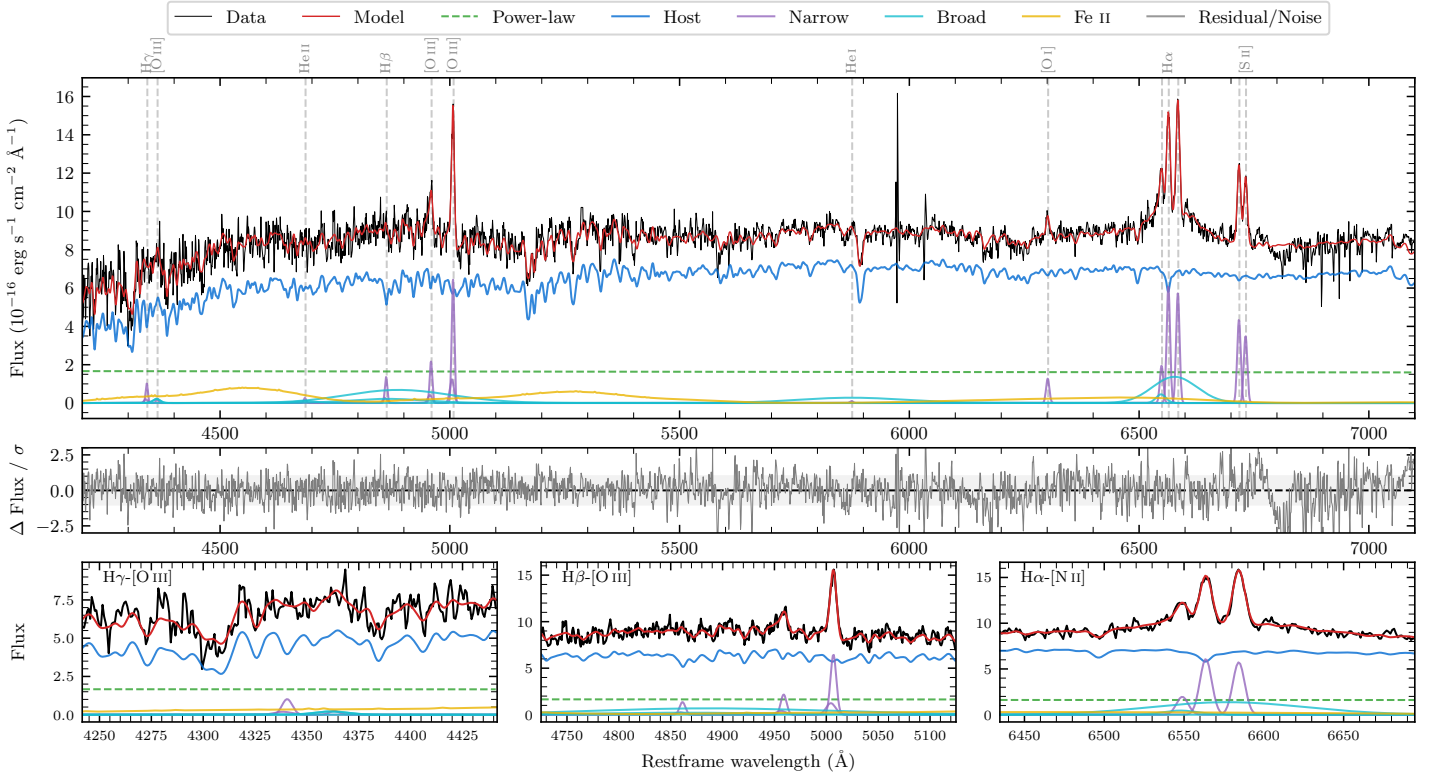
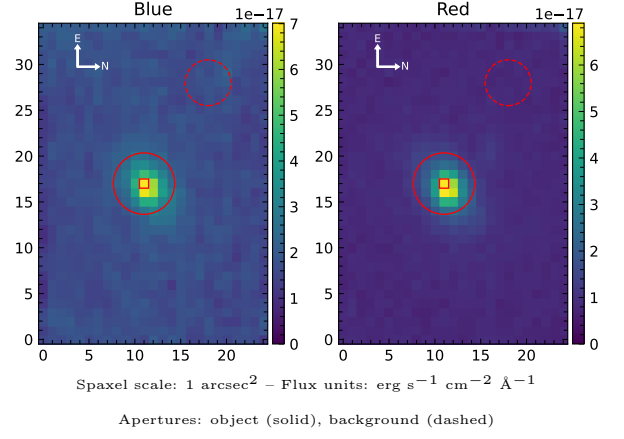


# LEDA 834201

Spectrum ID	87913039_sp1	Spectrum type	Sy 1.2
Alt name	g0927309-205917	Quality flag	good
$z$	0.0551	AGN reference	6dFGS
RA, Dec	141.8788, -20.9879	MW $E(B-V)$	0.047
MJD	61026.7	Power law $\alpha_\nu$	$-1.92 \pm 0.08$
SNR/ $\text{\AA}$ B/R	13.0/26.2	$\log L_{5100, \text{AGN}}$	$42.79 \pm 0.06$
Obs airmass	1.05	$\log H\beta_{\text{Br}}/[\text{O III}]$	$0.61 \pm 0.05$
SMSS ID	87913039	$\log M_{L5100}/M_\odot$	$8.76 \pm 0.06$
Neighbour	None $< 15''$	$\log M_{\text{H}\alpha}/M_\odot$	$7.32 \pm 0.07$
SMSS $\langle r_6 \rangle_{\text{ap}}$	$16.39 \pm 0.03$	$\log M_{\text{H}\beta}/M_\odot$	$8.88 \pm 0.06$
2MASS $K_{\text{ext}}$	$12.70 \pm 0.12$	$\log M_{[\text{O III}]} / M_\odot$	$8.72 \pm 0.07$



## Emission Line Measurements

Line	$\log L$ (erg s <sup>-1</sup> )	FWHM (km s <sup>-1</sup> )	$\sigma$ (km s <sup>-1</sup> )	EW (Å)
H $\gamma$ Narrow	$39.80 \pm 0.17$	$430 \pm 64$	$206 \pm 28$	$5.19 \pm 1.45$
<b>H<math>\gamma</math> Broad</b>	—	—	—	—
[O III] 4364	—	—	—	—
He II Narrow	$39.13 \pm 0.45$	$399 \pm 63$	$169 \pm 25$	$1.13 \pm 1.00$
<b>He II Broad</b>	<b><math>39.67 \pm 0.44</math></b>	<b><math>3487 \pm 63</math></b>	<b><math>1481 \pm 25</math></b>	<b><math>3.90 \pm 2.95</math></b>
H $\beta$ Narrow	$39.98 \pm 0.11$	$430 \pm 64$	$206 \pm 28$	$7.82 \pm 1.31$
<b>H<math>\beta</math> Broad</b>	<b><math>41.27 \pm 0.04</math></b>	<b><math>15360 \pm 927</math></b>	<b><math>5800 \pm 210</math></b>	<b><math>155.07 \pm 7.05</math></b>
[O III] 5007	$40.66 \pm 0.03$	$430 \pm 64$	$206 \pm 28$	$38.42 \pm 1.26$
He I Narrow	—	—	—	—
<b>He I Broad</b>	<b><math>40.80 \pm 0.08</math></b>	<b><math>14069 \pm 63</math></b>	<b><math>5975 \pm 25</math></b>	<b><math>53.10 \pm 4.49</math></b>
[O I] 6300	$39.94 \pm 0.06$	$399 \pm 63$	$169 \pm 25$	$7.44 \pm 0.60$
H $\alpha$ Narrow	$40.64 \pm 0.02$	$399 \pm 63$	$169 \pm 25$	$37.09 \pm 0.76$
<b>H<math>\alpha</math> Broad</b>	<b><math>41.14 \pm 0.02</math></b>	<b><math>4668 \pm 288</math></b>	<b><math>1850 \pm 26</math></b>	<b><math>116.94 \pm 2.40</math></b>
[N II] 6585	$40.61 \pm 0.02$	$399 \pm 63$	$169 \pm 25$	$35.03 \pm 0.73$
[S II] 6718	$40.50 \pm 0.02$	$399 \pm 63$	$169 \pm 25$	$27.23 \pm 0.67$
[S II] 6732	$40.41 \pm 0.02$	$399 \pm 63$	$169 \pm 25$	$21.96 \pm 0.65$

## Emission Summary

H $\alpha$ broad SNR	2.59
H $\beta$ broad SNR	1.47
H $\gamma$ broad SNR	0.90
AGN frac	0.22
Host frac	0.78
$\log L_{5100, \text{Host}}$	43.34
Fe II/H $\beta$	0.82
Fe II/[O III]	3.31

## Quality Flags

spurious_hab/hbb	0/0
15100	1
balmer	2
balmer_snr	2
hb_width	0
balmer_width	1