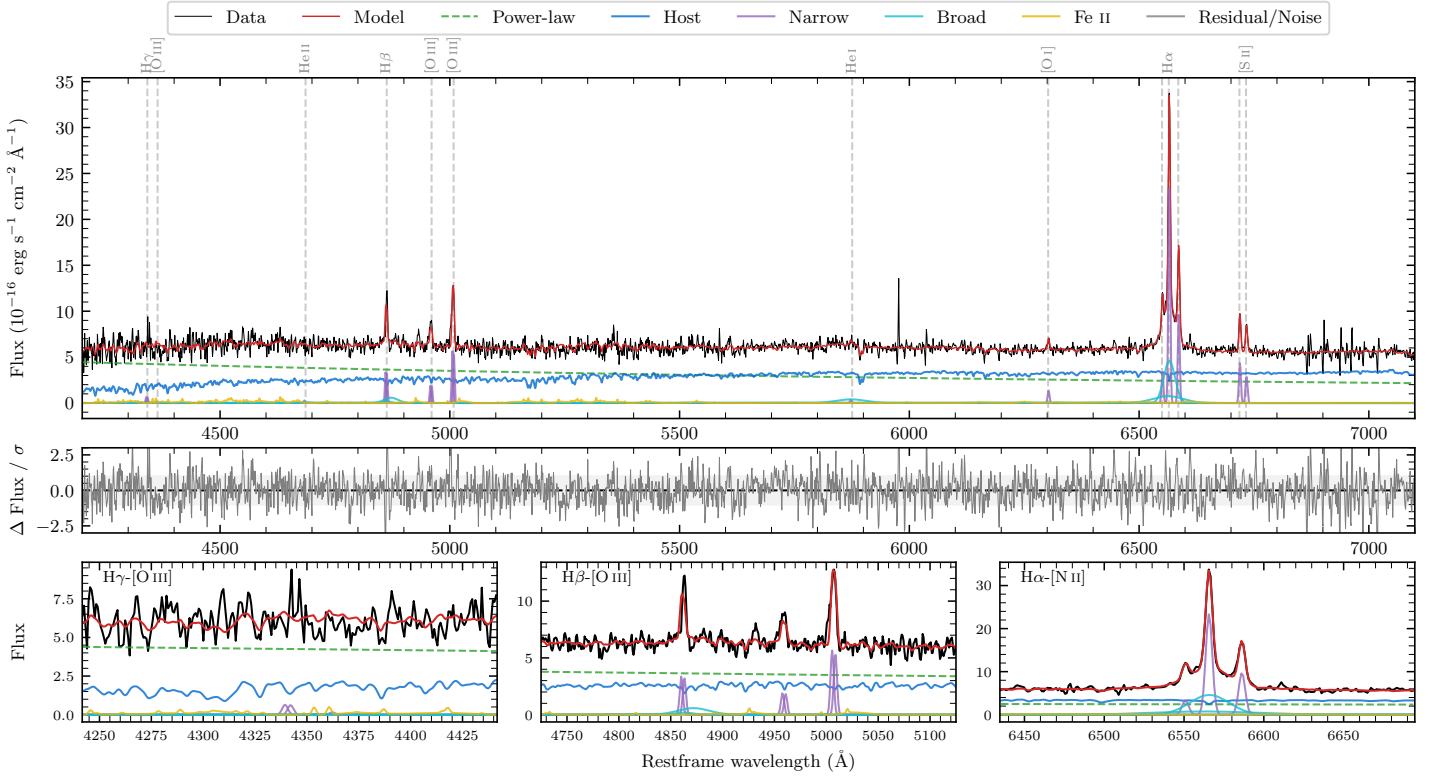
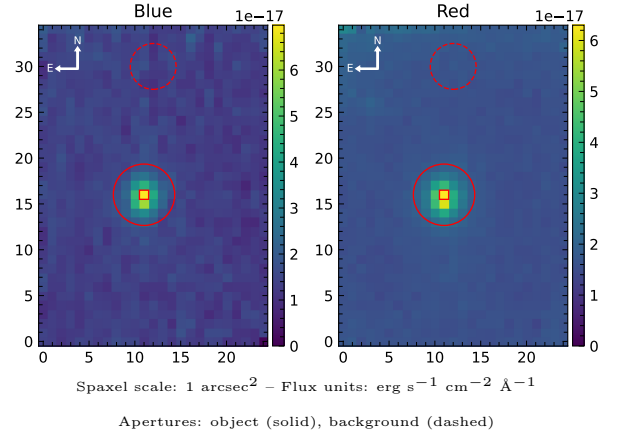


LEDA 139165

Spectrum ID	87797365_sp2	Spectrum type	Sy 1.5
Alt name	g0906479-151744	Quality flag	good
z	0.0549	AGN reference	6dFGS
RA, Dec	136.6997, -15.2955	MW $E(B - V)$	0.058
MJD	61137.42	Power law α_ν	-0.63 ± 0.15
SNR/ \AA B/R	10.3/15.3	$\log L_{5100, \text{AGN}}$	43.09 ± 0.02
Obs airmass	1.04	$\log H\beta_{\text{Br}}/[\text{O III}]$	-0.20 ± 0.10
SMSS ID	87797365	$\log M_{L5100}/M_\odot$	7.16 ± 0.06
Neighbour	12.6", 87797367	$\log M_{H\alpha}/M_\odot$	6.33 ± 0.05
SMSS $\langle r_6''_{\text{ap}} \rangle$	16.65 ± 0.05	$\log M_{H\beta}/M_\odot$	6.71 ± 0.09
2MASS K_{ext}	12.66 ± 0.13	$\log M_{[\text{O III}]} / M_\odot$	6.92 ± 0.07



Emission Line Measurements

Line	$\log L$ (erg s^{-1})	FWHM (km s^{-1})	σ (km s^{-1})	EW (\AA)
H γ Narrow	39.51 ± 0.25	375 ± 63	132 ± 25	1.08 ± 0.49
Hγ Broad	—	—	—	—
[O III] 4364	—	—	—	—
He II Narrow	—	—	—	—
He II Broad	—	—	—	—
H β Narrow	40.28 ± 0.04	375 ± 63	132 ± 25	7.32 ± 0.33
Hβ Broad	40.31 ± 0.10	2092 ± 135	722 ± 30	7.58 ± 0.92
[O III] 5007	40.52 ± 0.02	375 ± 63	132 ± 25	13.21 ± 0.35
He I Narrow	39.11 ± 0.31	226 ± 62	94 ± 25	0.65 ± 0.28
He I Broad	40.38 ± 0.08	3828 ± 63	1626 ± 25	12.06 ± 1.39
[O I] 6300	39.71 ± 0.11	226 ± 62	94 ± 25	2.80 ± 0.45
H α Narrow	40.96 ± 0.01	226 ± 62	94 ± 25	53.01 ± 0.49
Hα Broad	41.18 ± 0.02	1446 ± 69	648 ± 38	88.56 ± 1.53
[N II] 6585	40.58 ± 0.01	226 ± 62	94 ± 25	22.25 ± 0.45
[S II] 6718	40.24 ± 0.03	226 ± 62	94 ± 25	10.41 ± 0.38
[S II] 6732	40.07 ± 0.04	226 ± 62	94 ± 25	7.05 ± 0.36

Emission Summary

H α broad SNR	8.16
H β broad SNR	1.19
H γ broad SNR	0.00
AGN frac	0.59
Host frac	0.41
$\log L_{5100, \text{Host}}$	42.94
Fe II/H β	2.08
Fe II/[O III]	1.24

Quality Flags

spurious_hab/hbb	0/0
15100	0
balmer	1
balmer_snr	2
hb_width	0
balmer_width	0