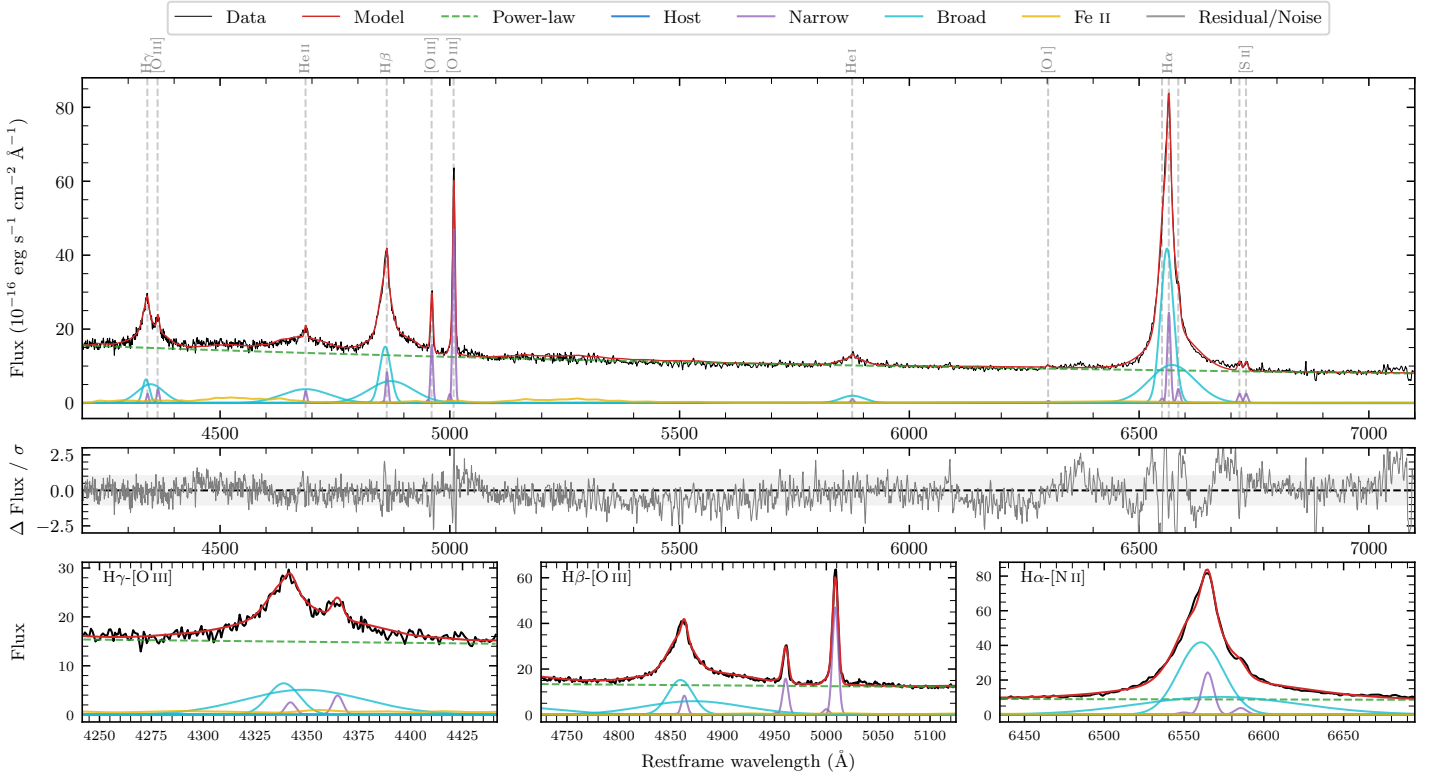
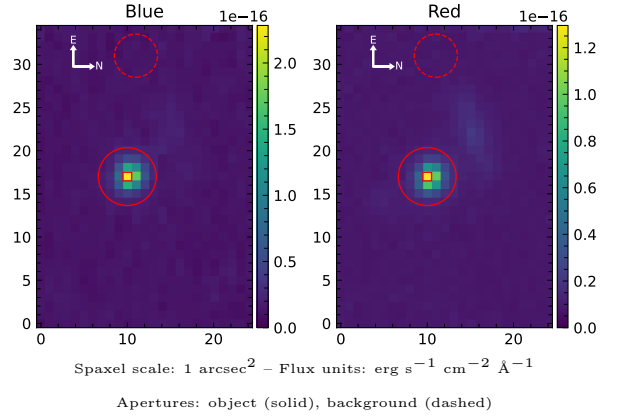


CTS 11

Spectrum ID	87107278_sp1	Spectrum type	Sy 1.2
Alt name	PGC 83475	Quality flag	good
z	0.0701	AGN reference	PGC
RA, Dec	169.2668, -29.0418	MW $E(B - V)$	0.053
MJD	61038.72	Power law α_ν	-0.73 ± 0.02
SNR/ \AA B/R	12.9/16.5	$\log L_{5100, \text{AGN}}$	43.87 ± 0.01
Obs airmass	1.07	$\log H\beta_{\text{Br}}/[\text{O III}]$	0.52 ± 0.01
SMSS ID	87107278	$\log M_{L5100}/M_\odot$	7.53 ± 0.03
Neighbour	7.0", 87107279	$\log M_{H\alpha}/M_\odot$	7.32 ± 0.04
SMSS $\langle r_6''_{\text{ap}} \rangle$	16.37 ± 0.07	$\log M_{H\beta}/M_\odot$	7.59 ± 0.03
2MASS K_{ext}	nan \pm nan	$\log M_{[\text{O III}]} / M_\odot$	7.51 ± 0.03



Emission Line Measurements

Line	$\log L$ (erg s^{-1})	FWHM (km s^{-1})	σ (km s^{-1})	EW (\AA)
H γ Narrow	40.32 ± 0.22	402 ± 63	207 ± 26	1.18 ± 0.27
Hγ Broad	41.80 ± 0.02	2004 ± 246	1397 ± 48	35.28 ± 0.82
[O III] 4364	40.49 ± 0.10	401 ± 63	169 ± 25	1.77 ± 0.24
He II Narrow	40.45 ± 0.09	401 ± 63	169 ± 25	1.73 ± 0.21
He II Broad	41.79 ± 0.02	7735 ± 192	3285 ± 81	38.23 ± 1.02
H β Narrow	40.89 ± 0.05	402 ± 63	207 ± 26	5.04 ± 0.29
Hβ Broad	42.17 ± 0.01	2187 ± 68	1699 ± 55	97.48 ± 1.00
[O III] 5007	41.65 ± 0.01	402 ± 63	207 ± 26	30.21 ± 0.30
He I Narrow	40.08 ± 0.14	401 ± 63	169 ± 25	0.99 ± 0.20
He I Broad	41.22 ± 0.03	3120 ± 148	1325 ± 62	13.53 ± 0.58
[O I] 6300	39.82 ± 0.19	401 ± 63	169 ± 25	0.59 ± 0.17
H α Narrow	41.46 ± 0.02	401 ± 63	169 ± 25	27.51 ± 0.38
Hα Broad	42.54 ± 0.01	1747 ± 66	1066 ± 25	333.24 ± 0.93
[N II] 6585	40.66 ± 0.06	401 ± 63	169 ± 25	4.39 ± 0.27
[S II] 6718	40.49 ± 0.04	401 ± 63	169 ± 25	3.03 ± 0.22
[S II] 6732	40.49 ± 0.05	401 ± 63	169 ± 25	3.04 ± 0.21

Emission Summary

H α broad SNR	47.35
H β broad SNR	19.20
H γ broad SNR	10.25
AGN frac	1.00
Host frac	0.00
$\log L_{5100, \text{Host}}$	41.47
Fe II/H β	0.28
Fe II/[O III]	0.93

Quality Flags

spurious_hab/hbb	0/0
15100	0
balmer	0
balmer_snr	0
hb_width	2
balmer_width	0