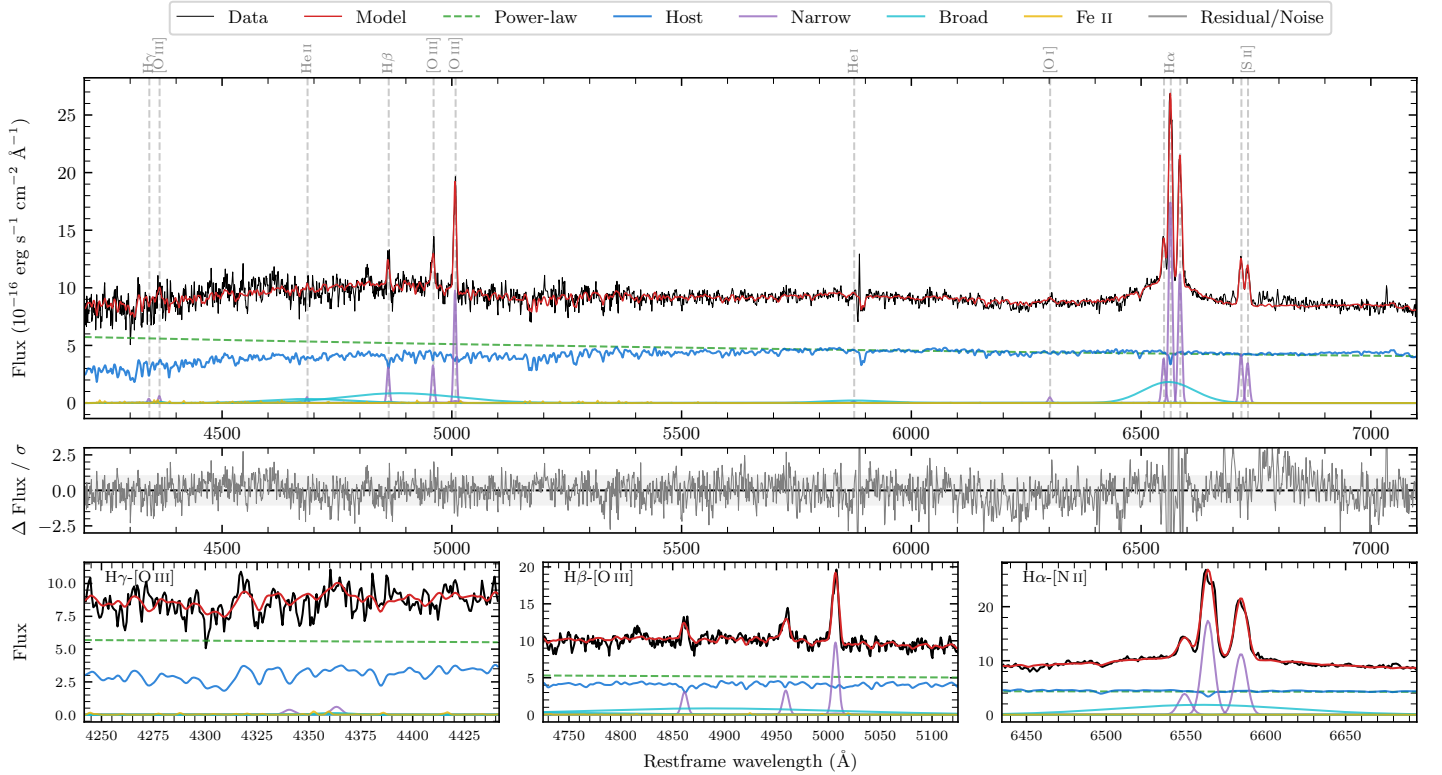
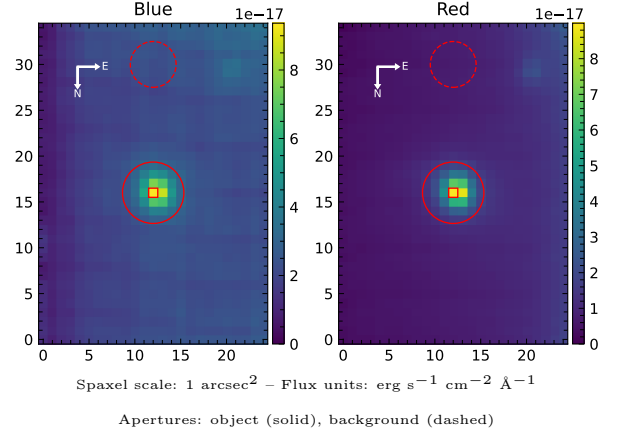


6dFGS gJ110726.4–302906

Spectrum ID	87034752_sp1	Spectrum type	Sy 1.5+
Alt name	g1107264–302906	Quality flag	good
z	0.0706	AGN reference	6dFGS
RA, Dec	166.8598, –30.4849	MW $E(B - V)$	0.060
MJD	60020.51	Power law α_ν	-1.35 ± 0.15
SNR/ \AA B/R	11.8/28.0	$\log L_{5100, \text{AGN}}$	43.50 ± 0.02
Obs airmass	1.04	$\log H\beta_{\text{Br}}/[\text{O III}]$	< -0.18
SMSS ID	87034752	$\log M_{L5100}/M_\odot$	–
Neighbour	None $< 15''$	$\log M_{\text{H}\alpha}/M_\odot$	7.75 ± 0.03
SMSS $\langle r_6''_{\text{ap}} \rangle$	16.34 ± 0.04	$\log M_{\text{H}\beta}/M_\odot$	–
2MASS K_{ext}	12.54 ± 0.09	$\log M_{[\text{O III}]} / M_\odot$	–



Emission Line Measurements

Line	$\log L$ (erg s $^{-1}$)	FWHM (km s $^{-1}$)	σ (km s $^{-1}$)	EW (Angstrom)
H γ Narrow	–	–	–	–
Hγ Broad	–	–	–	–
[O III] 4364	39.69 ± 0.39	411 ± 62	173 ± 25	0.73 ± 0.45
He II Narrow	39.65 ± 0.36	411 ± 62	173 ± 25	0.69 ± 0.41
He II Broad	–	–	–	–
H β Narrow	40.48 ± 0.08	412 ± 63	216 ± 41	4.71 ± 0.70
Hβ Broad	< 40.82	–	–	–
[O III] 5007	40.99 ± 0.03	412 ± 63	216 ± 41	15.67 ± 0.74
He I Narrow	39.21 ± 0.41	411 ± 62	173 ± 25	0.29 ± 0.26
He I Broad	40.69 ± 0.10	8150 ± 63	3461 ± 25	8.74 ± 0.93
[O I] 6300	39.77 ± 0.14	411 ± 62	173 ± 25	1.10 ± 0.21
H α Narrow	41.33 ± 0.01	411 ± 62	173 ± 25	41.32 ± 0.26
Hα Broad	41.52 ± 0.01	5862 ± 97	2200 ± 25	63.55 ± 0.95
[N II] 6585	41.15 ± 0.01	411 ± 62	173 ± 25	26.90 ± 0.25
[S II] 6718	40.73 ± 0.02	411 ± 62	173 ± 25	10.45 ± 0.28
[S II] 6732	40.64 ± 0.02	411 ± 62	173 ± 25	8.58 ± 0.27

Emission Summary

H α broad SNR	2.59
H β broad SNR	0.00
H γ broad SNR	0.00
AGN frac	0.57
Host frac	0.43
$\log L_{5100, \text{Host}}$	43.37
Fe II/H β	–
Fe II/[O III]	–

Quality Flags

spurious_hab/hbb	0/2
15100	0
balmer	2
balmer_snr	2
hb_width	2
balmer_width	2