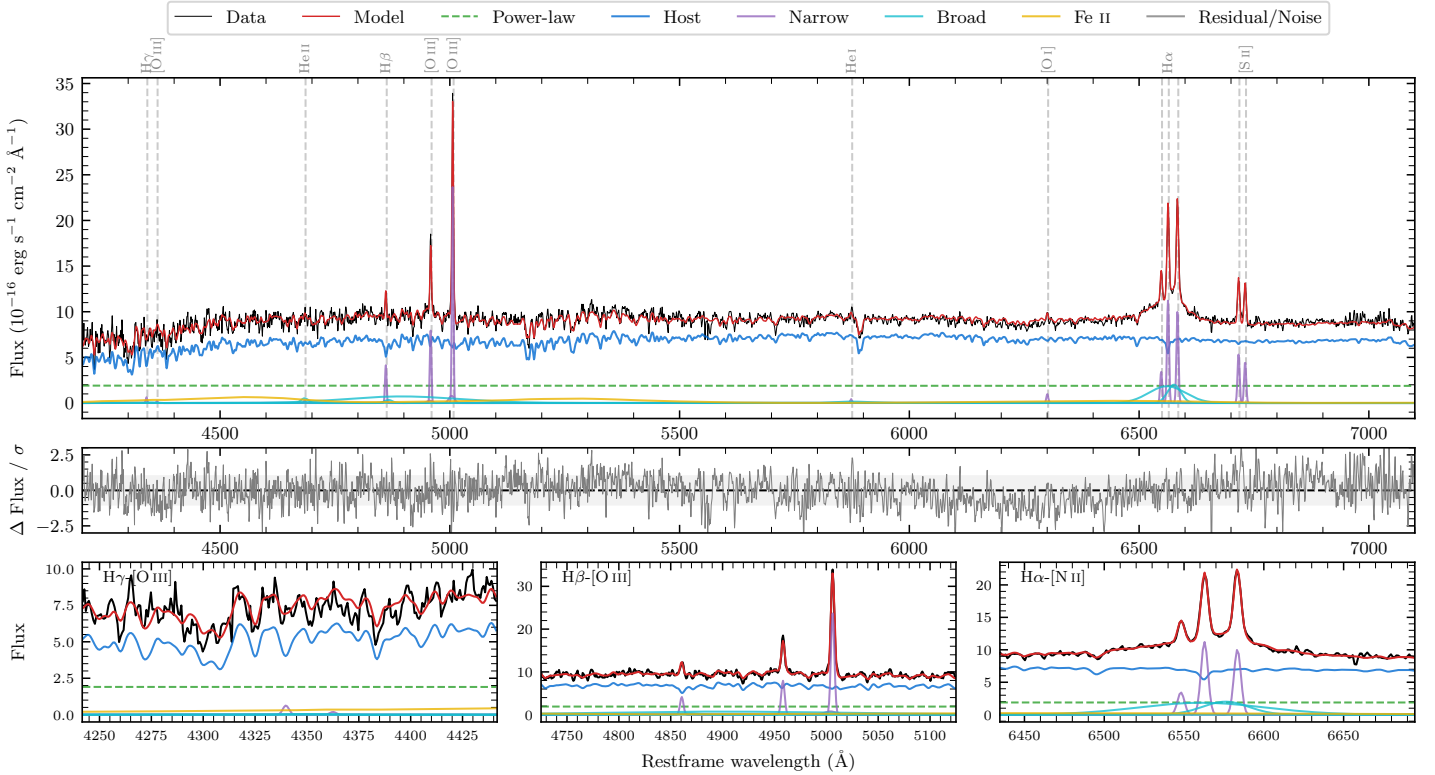
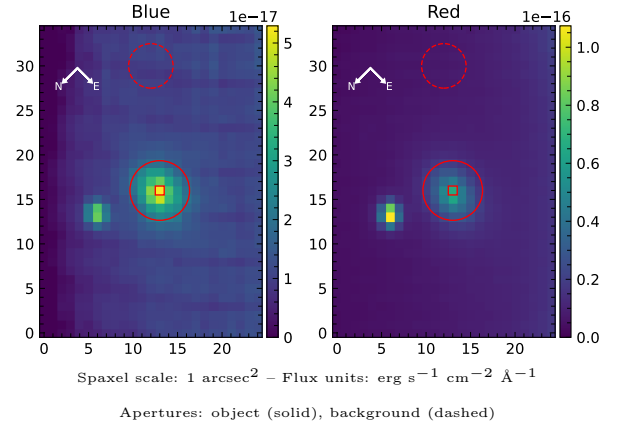


LEDA 660049

Spectrum ID	86793647_sp1	Spectrum type	Sy 1.8+
Alt name	g1135044-343612	Quality flag	good
z	0.0311	AGN reference	6dFGS
RA, Dec	173.7685, -34.6032	MW $E(B - V)$	0.067
MJD	60352.67	Power law α_ν	-1.97 ± 0.03
SNR/ \AA B/R	17.6/27.3	$\log L_{5100, \text{AGN}}$	42.35 ± 0.03
Obs airmass	1.00	$\log H\beta_{\text{Br}}/[\text{O III}]$	< -0.67
SMSS ID	86793647	$\log M_{L5100}/M_\odot$	—
Neighbour	7.1", 86793648	$\log M_{\text{H}\alpha}/M_\odot$	6.53 ± 0.07
SMSS $\langle r_{6'' \text{ap}} \rangle$	16.44 ± 0.04	$\log M_{\text{H}\beta}/M_\odot$	—
2MASS K_{ext}	12.18 ± 0.10	$\log M_{[\text{O III}]} / M_\odot$	—



Emission Line Measurements

Line	$\log L$ (erg s^{-1})	FWHM (km s^{-1})	σ (km s^{-1})	EW (\AA)
H γ Narrow	38.78 ± 0.30	243 ± 63	151 ± 29	1.38 ± 1.03
Hγ Broad	—	—	—	—
[O III] 4364	—	—	—	—
He II Narrow	38.45 ± 0.44	239 ± 62	100 ± 25	0.65 ± 0.51
He II Broad	—	—	—	—
H β Narrow	39.65 ± 0.04	243 ± 63	151 ± 29	10.22 ± 0.88
Hβ Broad	< 39.75	—	—	—
[O III] 5007	40.42 ± 0.01	243 ± 63	151 ± 29	60.11 ± 0.94
He I Narrow	38.71 ± 0.24	239 ± 62	100 ± 25	1.18 ± 0.37
He I Broad	39.52 ± 0.18	4171 ± 63	1771 ± 25	7.60 ± 1.58
[O I] 6300	39.09 ± 0.11	239 ± 62	100 ± 25	2.86 ± 0.41
H α Narrow	40.16 ± 0.01	239 ± 62	100 ± 25	33.79 ± 0.42
Hα Broad	40.78 ± 0.01	2433 ± 121	1289 ± 25	140.45 ± 1.78
[N II] 6585	40.12 ± 0.01	239 ± 62	100 ± 25	30.43 ± 0.43
[S II] 6718	39.85 ± 0.02	239 ± 62	100 ± 25	16.38 ± 0.44
[S II] 6732	39.78 ± 0.02	239 ± 62	100 ± 25	14.01 ± 0.44

Emission Summary

H α broad SNR	7.02
H β broad SNR	0.64
H γ broad SNR	0.00
AGN frac	0.23
Host frac	0.77
$\log L_{5100, \text{Host}}$	42.88
Fe II/H β	—
Fe II/[O III]	—

Quality Flags

spurious_hab/hbb	0/1
15100	1
balmer	2
balmer_snr	2
hb_width	2
balmer_width	2