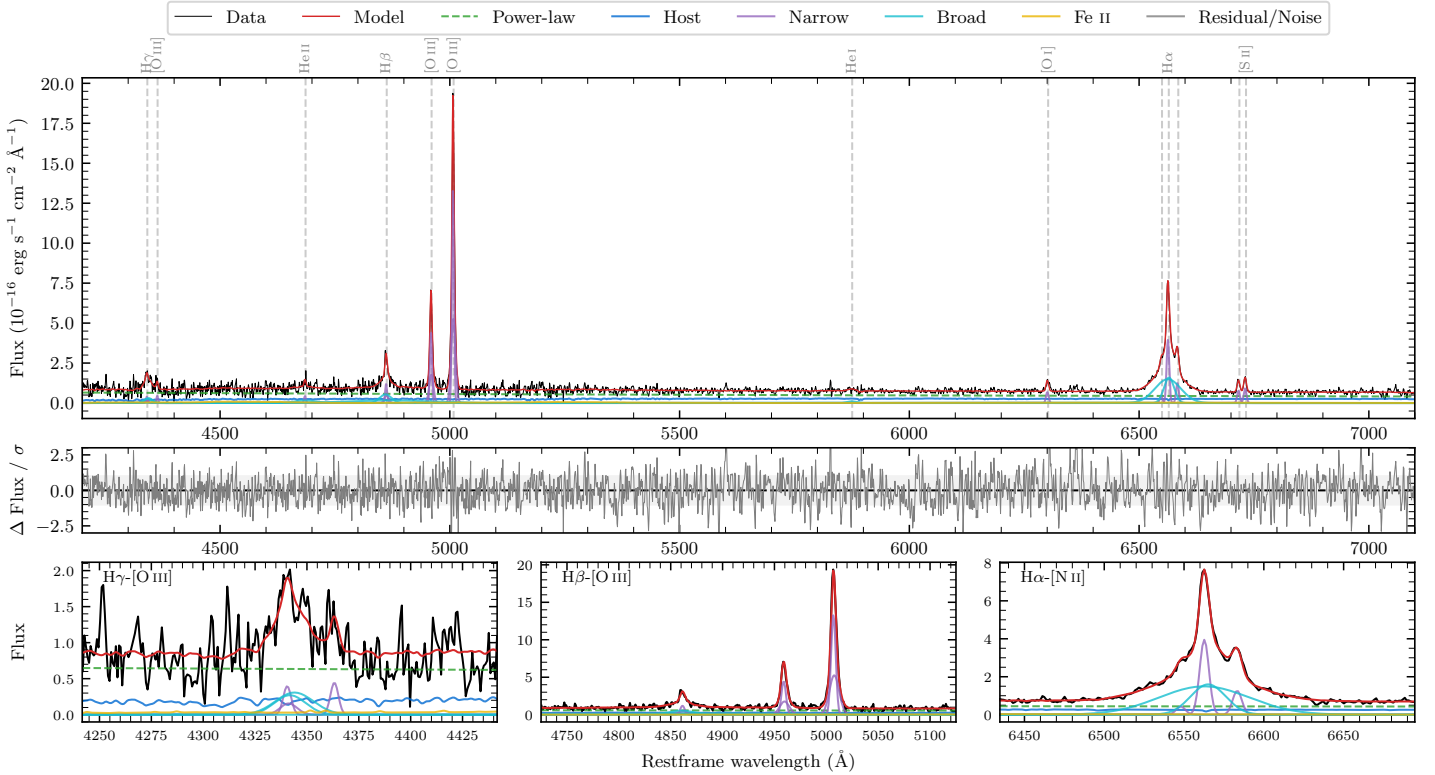
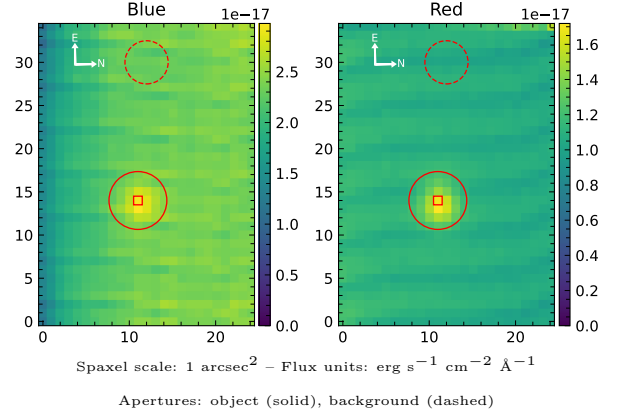


# 6dFGS gJ235457.7–054017

Spectrum ID	8609351_sp2	Spectrum type	Sy 1.5
Alt name	g2354577–054017	Quality flag	good
$z$	0.0806	AGN reference	6dFGS
RA, Dec	358.7402, –5.6713	MW $E(B - V)$	0.026
MJD	59426.62	Power law $\alpha_\nu$	$-1.11 \pm 0.19$
SNR/ $\text{\AA}$ B/R	3.9/7.4	$\log L_{5100, \text{AGN}}$	$42.66 \pm 0.04$
Obs airmass	1.36	$\log H\beta_{\text{Br}} / [\text{O III}]$	$-0.41 \pm 0.05$
SMSS ID	8609351	$\log M_{L5100} / M_\odot$	$7.03 \pm 0.08$
Neighbour	None $< 15''$	$\log M_{\text{H}\alpha} / M_\odot$	$6.63 \pm 0.04$
SMSS $\langle r_6 \rangle_{\text{ap}}$	$17.99 \pm 0.06$	$\log M_{\text{H}\beta} / M_\odot$	$7.07 \pm 0.09$
2MASS $K_{\text{ext}}$	nan $\pm$ nan	$\log M_{[\text{O III}]} / M_\odot$	$7.40 \pm 0.08$



## Emission Line Measurements

Line	$\log L$ ( $\text{erg s}^{-1}$ )	FWHM ( $\text{km s}^{-1}$ )	$\sigma$ ( $\text{km s}^{-1}$ )	EW ( $\text{\AA}$ )
H $\gamma$ Narrow	$39.78 \pm 0.22$	$372 \pm 63$	$213 \pm 25$	$5.93 \pm 1.57$
<b>H<math>\gamma</math> Broad</b>	<b><math>40.36 \pm 0.10</math></b>	<b><math>1377 \pm 125</math></b>	<b><math>500 \pm 42</math></b>	<b><math>20.68 \pm 2.68</math></b>
[O III] 4364	$39.57 \pm 0.20$	$317 \pm 63$	$132 \pm 25$	$3.67 \pm 1.47$
He II Narrow	$39.59 \pm 0.19$	$317 \pm 63$	$132 \pm 25$	$4.04 \pm 1.00$
<b>He II Broad</b>	<b><math>40.19 \pm 0.16</math></b>	<b><math>3304 \pm 79</math></b>	<b><math>1403 \pm 32</math></b>	<b><math>16.29 \pm 3.37</math></b>
H $\beta$ Narrow	$40.31 \pm 0.05$	$372 \pm 63$	$213 \pm 25$	$22.22 \pm 1.46$
<b>H<math>\beta</math> Broad</b>	<b><math>40.96 \pm 0.05</math></b>	<b><math>2250 \pm 193</math></b>	<b><math>3111 \pm 171</math></b>	<b><math>100.05 \pm 6.97</math></b>
[O III] 5007	$41.37 \pm 0.01$	$372 \pm 63$	$213 \pm 25$	$261.32 \pm 1.70$
He I Narrow	–	–	–	–
<b>He I Broad</b>	<b><math>39.66 \pm 0.15</math></b>	<b><math>1180 \pm 62</math></b>	<b><math>500 \pm 25</math></b>	<b><math>5.86 \pm 1.14</math></b>
[O I] 6300	$39.92 \pm 0.04$	$317 \pm 63$	$132 \pm 25$	$11.29 \pm 0.58$
H $\alpha$ Narrow	$40.70 \pm 0.01$	$317 \pm 63$	$132 \pm 25$	$70.51 \pm 0.69$
<b>H<math>\alpha</math> Broad</b>	<b><math>41.42 \pm 0.01</math></b>	<b><math>1742 \pm 72</math></b>	<b><math>872 \pm 25</math></b>	<b><math>368.62 \pm 1.98</math></b>
[N II] 6585	$40.20 \pm 0.02$	$317 \pm 63$	$132 \pm 25$	$22.63 \pm 0.64$
[S II] 6718	$40.00 \pm 0.03$	$317 \pm 63$	$132 \pm 25$	$14.27 \pm 0.71$
[S II] 6732	$40.07 \pm 0.03$	$317 \pm 63$	$132 \pm 25$	$17.16 \pm 0.77$

## Emission Summary

H $\alpha$ broad SNR	13.92
H $\beta$ broad SNR	3.17
H $\gamma$ broad SNR	2.77
AGN frac	0.72
Host frac	0.28
$\log L_{5100, \text{Host}}$	42.25
Fe II/H $\beta$	0.35
Fe II/[O III]	0.14

## Quality Flags

spurious_hab/hbb	0/0
15100	0
balmer	0
balmer_snr	1
hb_width	2
balmer_width	0