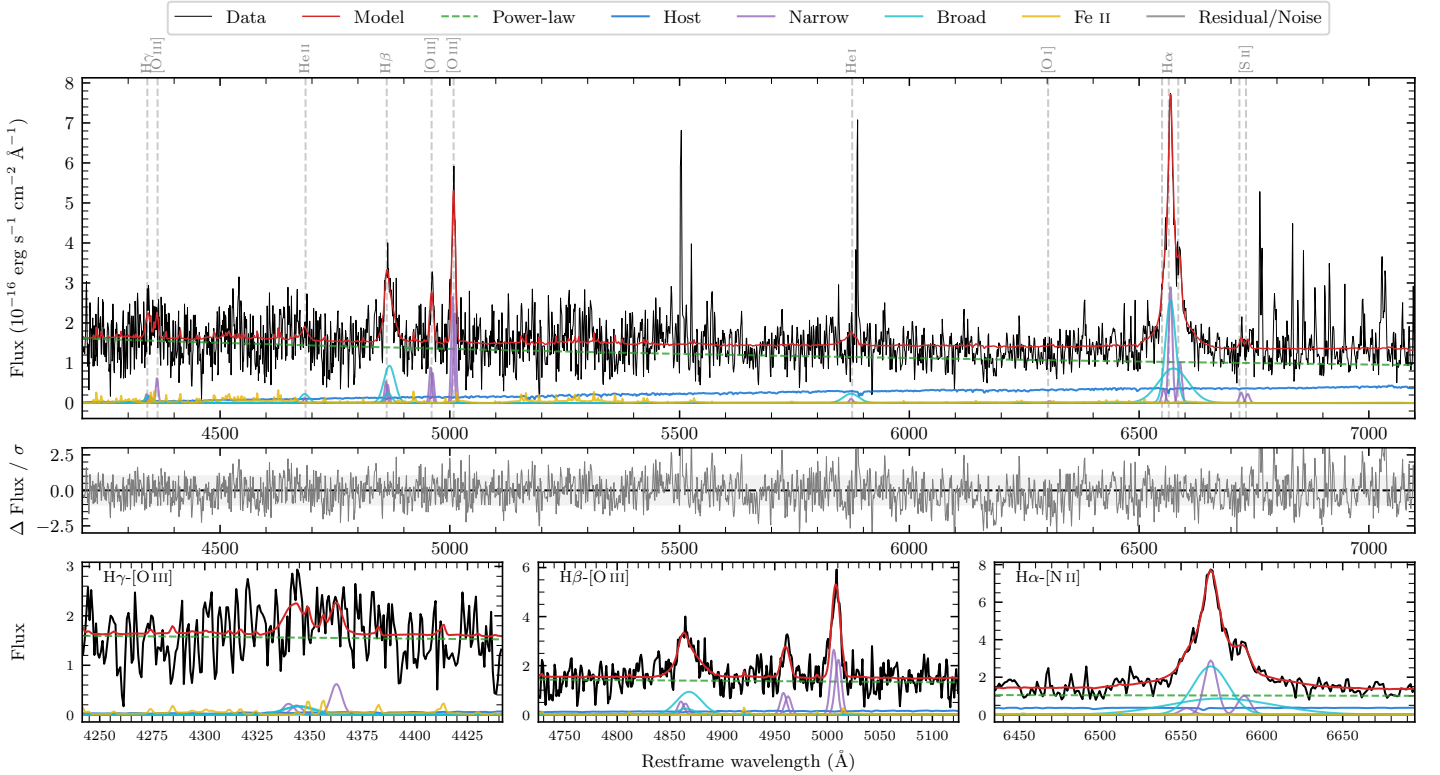
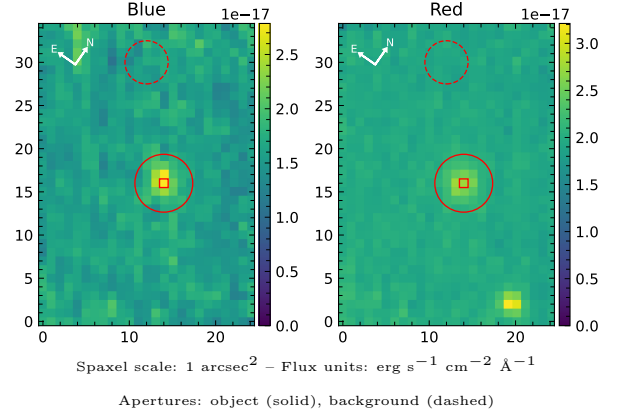


# LEDA 759477

Spectrum ID	86079871_sp1	Spectrum type	Bad
Alt name	g1032570-270730	Quality flag	bad_all
$z$	0.0707	AGN reference	6dFGS
RA, Dec	158.2376, -27.1251	MW $E(B-V)$	0.063
MJD	60079.4	Power law $\alpha_\nu$	$-0.99 \pm 0.26$
SNR/ $\text{\AA}$ B/R	2.8/3.8	$\log L_{5100, \text{AGN}}$	$42.92 \pm 0.03$
Obs airmass	1.01	$\log H\beta_{\text{Br}}/[\text{O III}]$	$-0.04 \pm 0.09$
SMSS ID	86079871	$\log M_{L5100}/M_\odot$	$6.85 \pm 0.06$
Neighbour	14.7", 86079870	$\log M_{H\alpha}/M_\odot$	$6.36 \pm 0.06$
SMSS $\langle r_6''_{\text{ap}} \rangle$	$16.69 \pm 0.08$	$\log M_{H\beta}/M_\odot$	$6.64 \pm 0.08$
2MASS $K_{\text{ext}}$	$12.39 \pm 0.10$	$\log M_{[\text{O III}]} / M_\odot$	$6.77 \pm 0.07$



## Emission Line Measurements

Line	$\log L$ (erg s <sup>-1</sup> )	FWHM (km s <sup>-1</sup> )	$\sigma$ (km s <sup>-1</sup> )	EW (Å)
H $\gamma$ Narrow	$39.55 \pm 0.44$	$568 \pm 63$	$224 \pm 25$	$1.86 \pm 1.08$
<b>H<math>\gamma</math> Broad</b>	—	—	—	—
[O III] 4364	$39.74 \pm 0.25$	$433 \pm 62$	$182 \pm 25$	$2.86 \pm 1.04$
He II Narrow	—	—	—	—
<b>He II Broad</b>	<b><math>39.84 \pm 0.33</math></b>	<b><math>1409 \pm 63</math></b>	<b><math>598 \pm 25</math></b>	<b><math>3.93 \pm 1.77</math></b>
H $\beta$ Narrow	$39.99 \pm 0.22$	$568 \pm 63$	$224 \pm 25$	$5.70 \pm 1.10$
<b>H<math>\beta</math> Broad</b>	<b><math>40.66 \pm 0.08</math></b>	<b><math>1607 \pm 96</math></b>	<b><math>618 \pm 30</math></b>	<b><math>25.24 \pm 2.05</math></b>
[O III] 5007	$40.69 \pm 0.03$	$568 \pm 63$	$224 \pm 25$	$29.64 \pm 1.25$
He I Narrow	—	—	—	—
<b>He I Broad</b>	<b><math>40.12 \pm 0.21</math></b>	<b><math>2049 \pm 62</math></b>	<b><math>870 \pm 25</math></b>	<b><math>9.27 \pm 2.64</math></b>
[O I] 6300	—	—	—	—
H $\alpha$ Narrow	$40.58 \pm 0.05$	$433 \pm 62$	$182 \pm 25$	$30.28 \pm 1.18$
<b>H<math>\alpha</math> Broad</b>	<b><math>41.27 \pm 0.02</math></b>	<b><math>1415 \pm 80</math></b>	<b><math>765 \pm 37</math></b>	<b><math>147.69 \pm 3.33</math></b>
[N II] 6585	$40.13 \pm 0.09$	$433 \pm 62$	$182 \pm 25$	$10.68 \pm 1.14$
[S II] 6718	$39.55 \pm 0.26$	$433 \pm 62$	$182 \pm 25$	$2.88 \pm 1.15$
[S II] 6732	$39.49 \pm 0.29$	$433 \pm 62$	$182 \pm 25$	$2.50 \pm 1.15$

## Emission Summary

H $\alpha$ broad SNR	6.34
H $\beta$ broad SNR	2.33
H $\gamma$ broad SNR	0.82
AGN frac	0.90
Host frac	0.10
$\log L_{5100, \text{Host}}$	41.96
Fe II/H $\beta$	0.69
Fe II/[O III]	0.61

## Quality Flags

spurious_hab/hbb	0/0
15100	0
balmer	1
balmer_snr	2
hb_width	0
balmer_width	0