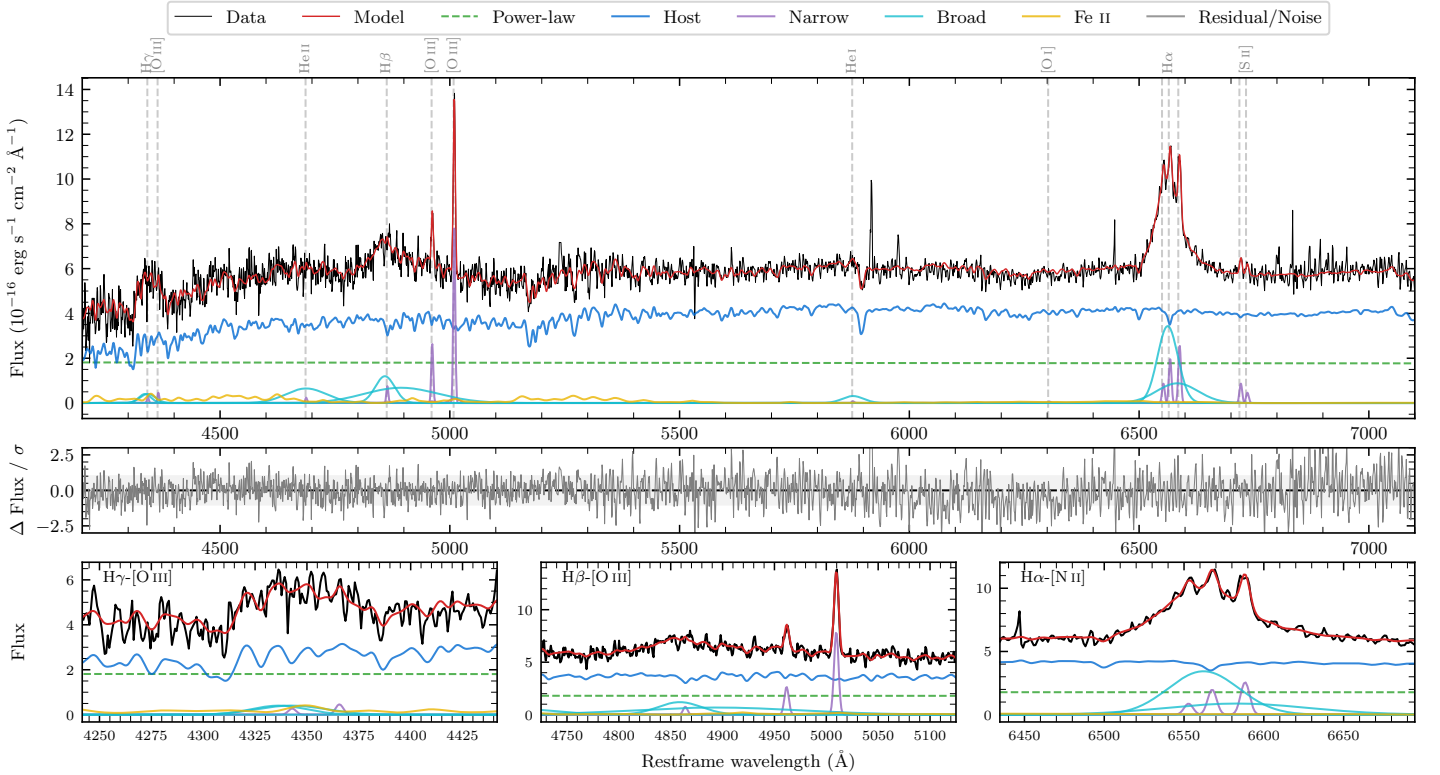
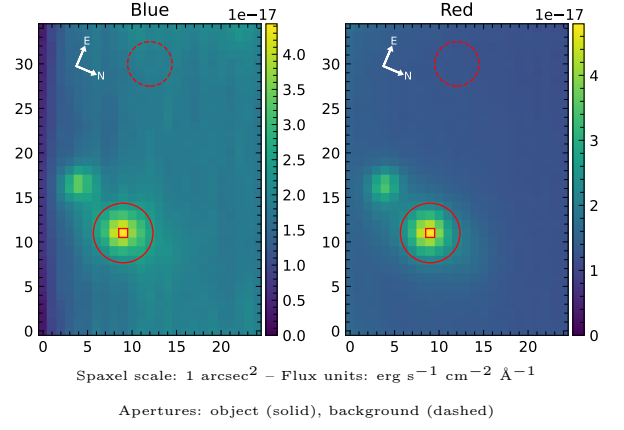


LEDA 735527

Spectrum ID	85819989_sp1	Spectrum type	Sy 1.2
Alt name	g1014114-285631	Quality flag	good
z	0.0652	AGN reference	6dFGS
RA, Dec	153.5476, -28.9420	MW $E(B-V)$	0.065
MJD	59350.37	Power law α_ν	-1.96 ± 0.04
SNR/ \AA B/R	10.8/24.9	$\log L_{5100, \text{AGN}}$	42.97 ± 0.02
Obs airmass	1.00	$\log H\beta_{\text{Br}}/[\text{O III}]$	0.62 ± 0.04
SMSS ID	85819989	$\log M_{L5100}/M_\odot$	7.71 ± 0.08
Neighbour	7.0", 85819990	$\log M_{H\alpha}/M_\odot$	7.05 ± 0.03
SMSS $\langle r_{6''}^{\text{ap}} \rangle$	16.83 ± 0.06	$\log M_{H\beta}/M_\odot$	7.79 ± 0.08
2MASS K_{ext}	12.74 ± 0.15	$\log M_{[\text{O III}]} / M_\odot$	7.63 ± 0.08



Emission Line Measurements

Line	$\log L$ (erg s $^{-1}$)	FWHM (km s $^{-1}$)	σ (km s $^{-1}$)	EW (Angstrom)
H γ Narrow	—	—	—	—
Hγ Broad	40.54 ± 0.10	2453 ± 190	923 ± 60	17.75 ± 2.35
[O III] 4364	39.37 ± 0.37	307 ± 63	129 ± 25	1.28 ± 0.98
He II Narrow	39.12 ± 0.43	307 ± 63	129 ± 25	0.72 ± 0.65
He II Broad	40.89 ± 0.06	6625 ± 66	2814 ± 27	42.36 ± 3.47
H β Narrow	39.69 ± 0.23	313 ± 63	233 ± 67	2.65 ± 1.73
Hβ Broad	41.34 ± 0.03	4233 ± 340	3202 ± 97	118.34 ± 4.58
[O III] 5007	40.72 ± 0.03	313 ± 63	233 ± 67	28.39 ± 1.41
He I Narrow	—	—	—	—
He I Broad	40.29 ± 0.08	2764 ± 65	1174 ± 26	10.75 ± 1.14
[O I] 6300	—	—	—	—
H α Narrow	40.18 ± 0.04	307 ± 63	129 ± 25	8.44 ± 0.48
Hα Broad	41.50 ± 0.01	2672 ± 72	1147 ± 29	173.44 ± 1.53
[N II] 6585	40.29 ± 0.03	307 ± 63	129 ± 25	10.95 ± 0.39
[S II] 6718	39.84 ± 0.07	307 ± 63	129 ± 25	3.82 ± 0.35
[S II] 6732	39.56 ± 0.13	307 ± 63	129 ± 25	2.01 ± 0.35

Emission Summary

H α broad SNR	8.63
H β broad SNR	3.71
H γ broad SNR	1.73
AGN frac	0.34
Host frac	0.66
$\log L_{5100, \text{Host}}$	43.26
Fe II/H β	0.37
Fe II/[O III]	1.55

Quality Flags

spurious_hab/hbb	0/0
15100	1
balmer	0
balmer_snr	1
hb_width	2
balmer_width	0