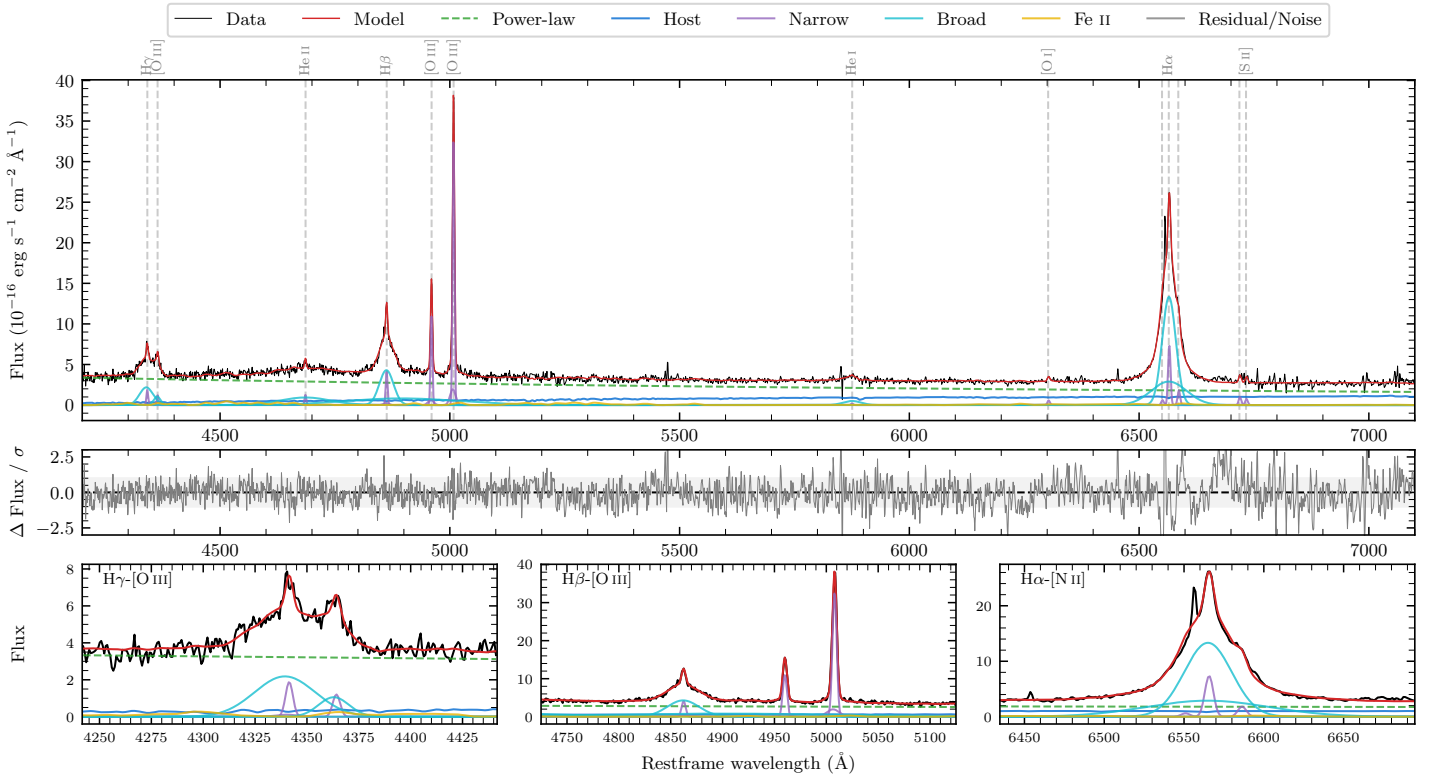
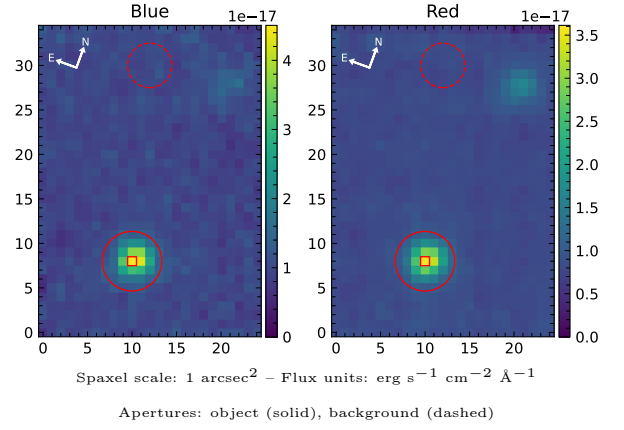


2MASS J23421687–0502053

Spectrum ID	8576278_sp1	Spectrum type	Sy 1.5
Alt name	g2342169–050205	Quality flag	good
z	0.0768	AGN reference	6dFGS
RA, Dec	355.5703, –5.0348	MW $E(B - V)$	0.027
MJD	60171.67	Power law α_ν	-0.60 ± 0.16
SNR/Å B/R	9.2/12.9	$\log L_{5100, \text{AGN}}$	43.28 ± 0.02
Obs airmass	1.12	$\log H\beta_{\text{Br}} / [\text{O III}]$	-0.07 ± 0.21
SMSS ID	8576278	$\log M_{L5100} / M_\odot$	7.29 ± 0.03
Neighbour	None $< 15''$	$\log M_{\text{H}\alpha} / M_\odot$	7.06 ± 0.03
SMSS $\langle r_6''_{\text{ap}} \rangle$	17.11 ± 0.11	$\log M_{\text{H}\beta} / M_\odot$	7.26 ± 0.11
2MASS K_{ext}	nan \pm nan	$\log M_{[\text{O III}]} / M_\odot$	7.45 ± 0.02



Emission Line Measurements

Line	$\log L$ (erg s $^{-1}$)	FWHM (km s $^{-1}$)	σ (km s $^{-1}$)	EW (Å)
H γ Narrow	40.19 ± 0.09	301 ± 63	182 ± 28	3.28 ± 0.55
Hγ Broad	41.20 ± 0.03	3205 ± 162	1070 ± 47	33.27 ± 1.00
[O III] 4364	39.93 ± 0.16	288 ± 63	122 ± 25	1.81 ± 0.33
He II Narrow	39.97 ± 0.10	288 ± 63	122 ± 25	2.24 ± 0.33
He II Broad	—	—	—	—
H β Narrow	40.57 ± 0.04	301 ± 63	182 ± 28	9.35 ± 0.60
Hβ Broad	$41.41^{+0.40}_{-0.02}$	2232 ± 55	821 ± 28	64.84 ± 1.01
[O III] 5007	41.49 ± 0.01	301 ± 63	182 ± 28	79.90 ± 0.68
He I Narrow	39.26 ± 0.35	288 ± 63	122 ± 25	0.59 ± 0.32
He I Broad	40.58 ± 0.05	2331 ± 142	990 ± 60	12.53 ± 0.86
[O I] 6300	39.76 ± 0.09	288 ± 63	122 ± 25	2.09 ± 0.27
H α Narrow	40.89 ± 0.02	288 ± 63	122 ± 25	29.48 ± 0.50
Hα Broad	42.08 ± 0.01	1795 ± 65	830 ± 25	463.27 ± 1.52
[N II] 6585	40.28 ± 0.05	288 ± 63	122 ± 25	7.35 ± 0.48
[S II] 6718	40.03 ± 0.06	288 ± 63	122 ± 25	4.19 ± 0.54
[S II] 6732	39.91 ± 0.09	288 ± 63	122 ± 25	3.21 ± 0.57

Emission Summary

H α broad SNR	38.93
H β broad SNR	10.31
H γ broad SNR	5.29
AGN frac	0.81
Host frac	0.18
$\log L_{5100, \text{Host}}$	42.64
Fe II/H β	—
Fe II/[O III]	—

Quality Flags

spurious_hab/hbb	0/1
15100	0
balmer	0
balmer_snr	0
hb_width	0
balmer_width	0