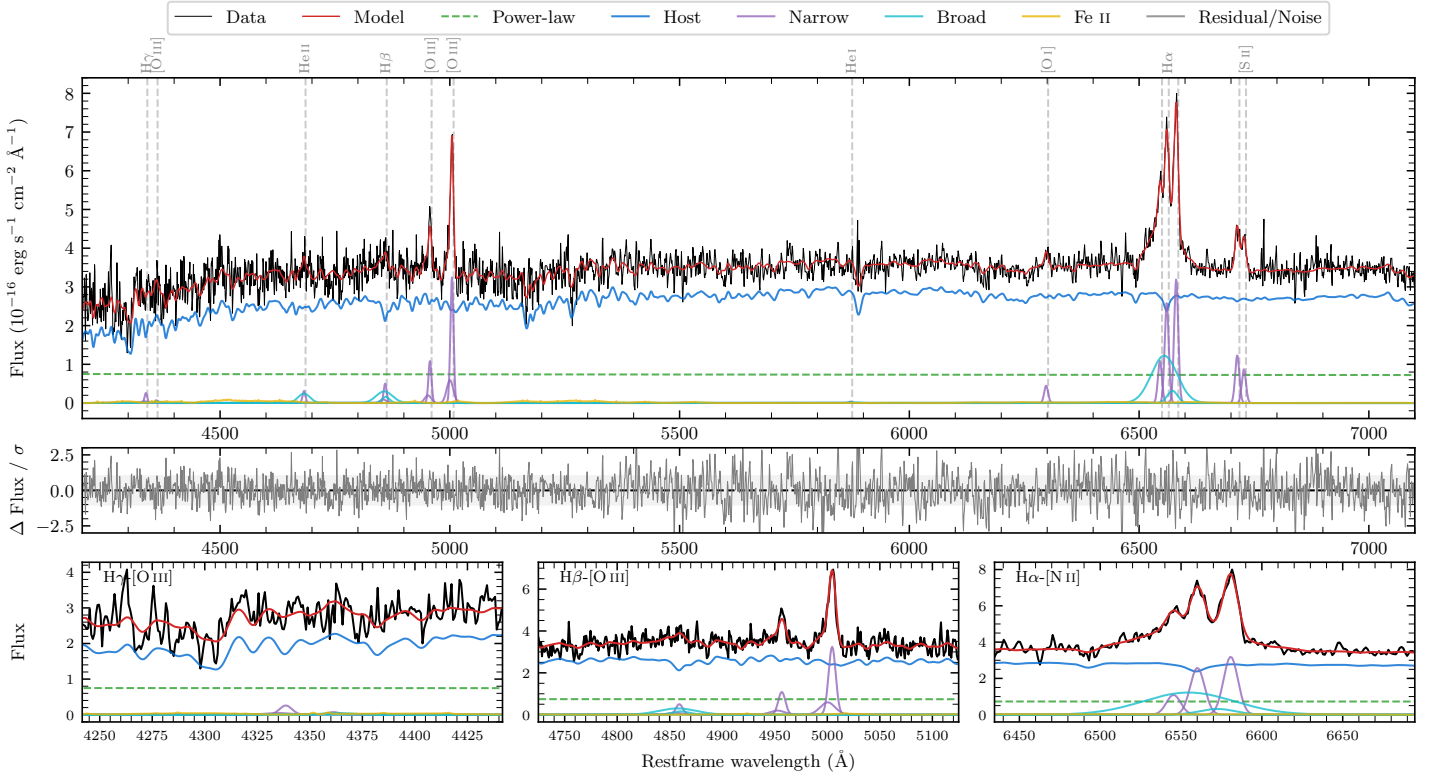
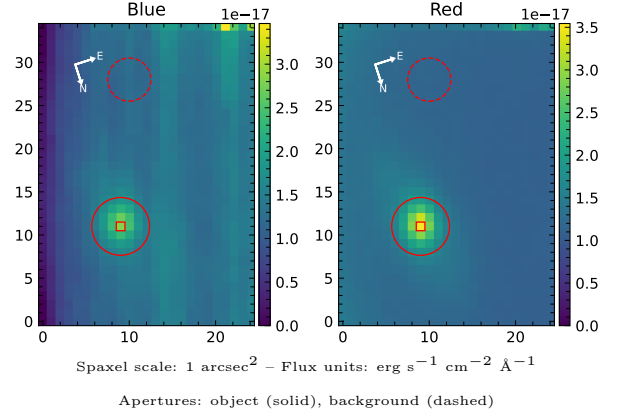


# LEDA 718483

Spectrum ID	85387795_sp1	Spectrum type	Sy 1.5
Alt name	g1020443-301955	Quality flag	good
$z$	0.0693	AGN reference	6dFGS
RA, Dec	155.1845, -30.3319	MW $E(B - V)$	0.048
MJD	59347.41	Power law $\alpha_\nu$	$-1.93 \pm 0.07$
SNR/ $\text{\AA}$ B/R	9.2/20.3	$\log L_{5100, \text{AGN}}$	$42.66 \pm 0.05$
Obs airmass	1.02	$\log H\beta_{\text{Br}}/[\text{O III}]$	$-0.33 \pm 0.13$
SMSS ID	85387795	$\log M_{L5100}/M_\odot$	$6.92 \pm 0.19$
Neighbour	None $< 15''$	$\log M_{\text{H}\alpha}/M_\odot$	$6.88 \pm 0.05$
SMSS $\langle r_6'' \text{ap} \rangle$	$16.58 \pm 0.04$	$\log M_{\text{H}\beta}/M_\odot$	$6.68 \pm 0.21$
2MASS $K_{\text{ext}}$	$12.45 \pm 0.11$	$\log M_{[\text{O III}]} / M_\odot$	$6.95 \pm 0.19$



## Emission Line Measurements

Line	$\log L$ ( $\text{erg s}^{-1}$ )	FWHM ( $\text{km s}^{-1}$ )	$\sigma$ ( $\text{km s}^{-1}$ )	EW ( $\text{\AA}$ )
H $\gamma$ Narrow	$39.53 \pm 0.33$	$524 \pm 65$	$306 \pm 34$	$3.77 \pm 2.25$
<b>H<math>\gamma</math> Broad</b>	—	—	—	—
[O III] 4364	—	—	—	—
He II Narrow	$39.50 \pm 0.33$	$479 \pm 63$	$203 \pm 25$	$3.55 \pm 1.40$
<b>He II Broad</b>	<b><math>40.01 \pm 0.23</math></b>	<b><math>1959 \pm 63</math></b>	<b><math>832 \pm 25</math></b>	<b><math>11.49 \pm 2.87</math></b>
H $\beta$ Narrow	$39.86 \pm 0.22$	$524 \pm 65$	$306 \pm 34$	$8.25 \pm 1.93$
<b>H<math>\beta</math> Broad</b>	<b><math>40.36 \pm 0.13</math></b>	<b><math>1974 \pm 457</math></b>	<b><math>840 \pm 66</math></b>	<b><math>24.06 \pm 3.19</math></b>
[O III] 5007	$40.69 \pm 0.03$	$524 \pm 65$	$306 \pm 34$	$55.03 \pm 2.04$
He I Narrow	—	—	—	—
<b>He I Broad</b>	—	—	—	—
[O I] 6300	$39.79 \pm 0.08$	$479 \pm 63$	$203 \pm 25$	$7.03 \pm 0.76$
H $\alpha$ Narrow	$40.57 \pm 0.02$	$479 \pm 63$	$203 \pm 25$	$42.28 \pm 0.84$
<b>H<math>\alpha</math> Broad</b>	<b><math>41.08 \pm 0.02</math></b>	<b><math>2924 \pm 96</math></b>	<b><math>1079 \pm 25</math></b>	<b><math>139.85 \pm 2.21</math></b>
[N II] 6585	$40.66 \pm 0.02$	$479 \pm 63$	$203 \pm 25$	$52.52 \pm 0.90$
[S II] 6718	$40.26 \pm 0.03$	$479 \pm 63$	$203 \pm 25$	$20.72 \pm 0.86$
[S II] 6732	$40.11 \pm 0.04$	$479 \pm 63$	$203 \pm 25$	$14.71 \pm 0.85$

## Emission Summary

H $\alpha$ broad SNR	4.18
H $\beta$ broad SNR	1.53
H $\gamma$ broad SNR	0.00
AGN frac	0.23
Host frac	0.77
$\log L_{5100, \text{Host}}$	43.19
Fe II/H $\beta$	0.87
Fe II/[O III]	0.38

## Quality Flags

spurious_hab/hbb	0/0
15100	1
balmer	1
balmer_snr	2
hb_width	0
balmer_width	2