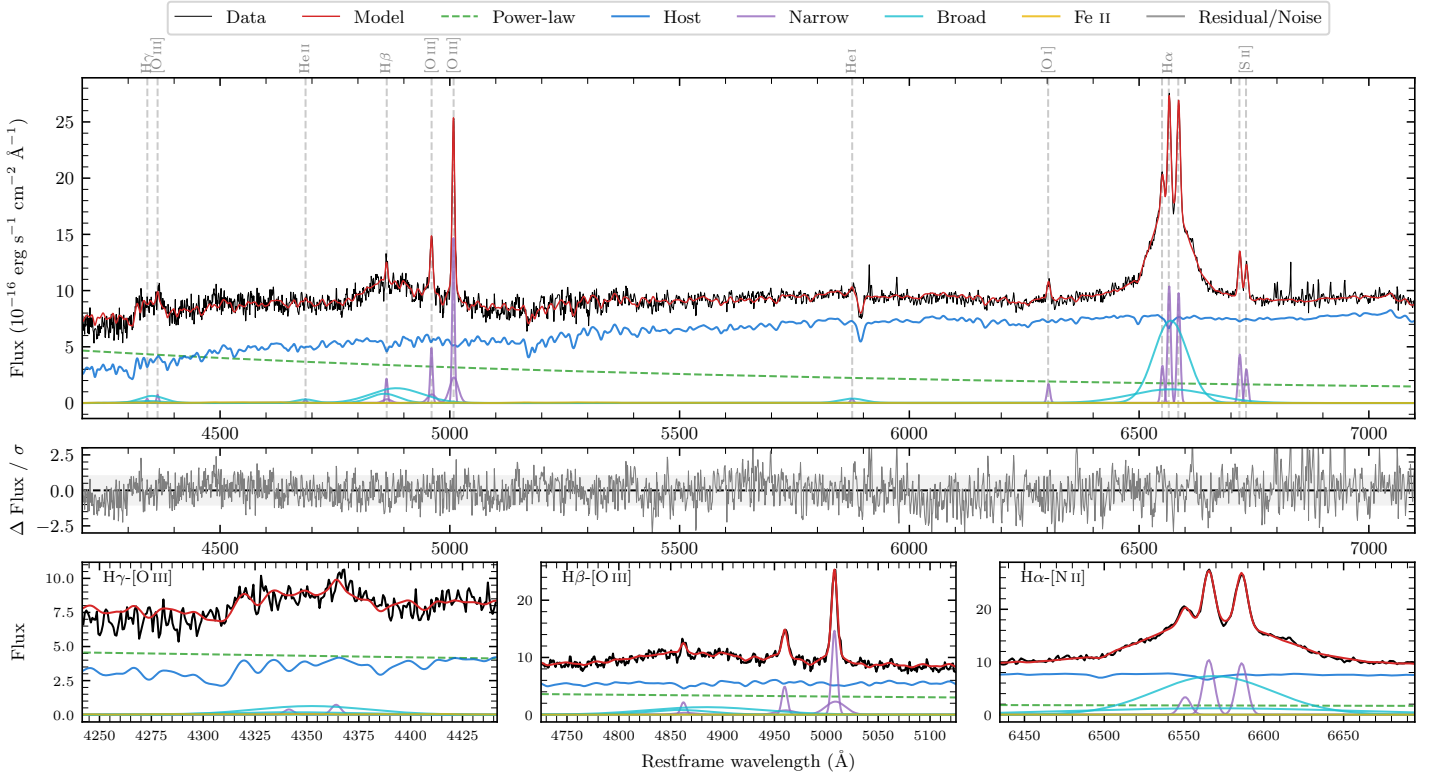
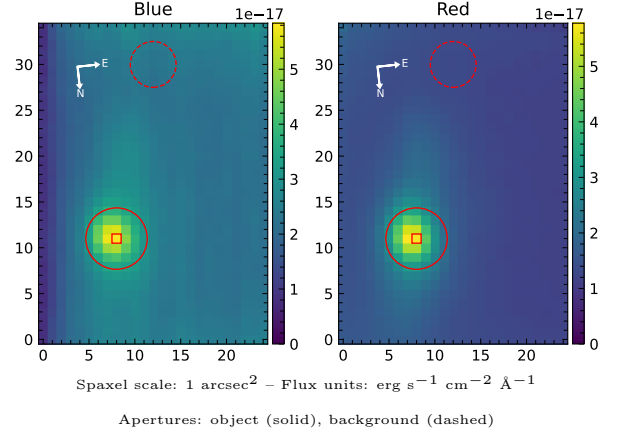


LEDA 83009

| | | | |
|--|--------------------|--|------------------|
| Spectrum ID | 83414158_sp1 | Spectrum type | Sy 1.5 |
| Alt name | g1028280-353054 | Quality flag | good |
| z | 0.0655 | AGN reference | 6dFGS |
| RA, Dec | 157.1168, -35.5149 | MW $E(B-V)$ | 0.071 |
| MJD | 59349.43 | Power law α_ν | 0.20 ± 0.20 |
| SNR/ \AA B/R | 13.3/31.2 | $\log L_{5100, \text{AGN}}$ | 43.21 ± 0.04 |
| Obs airmass | 1.04 | $\log H\beta_{\text{Br}}/[\text{O III}]$ | 0.22 ± 0.03 |
| SMSS ID | 83414158 | $\log M_{L5100}/M_\odot$ | 8.24 ± 0.06 |
| Neighbour | None $< 15''$ | $\log M_{\text{H}\alpha}/M_\odot$ | 7.78 ± 0.02 |
| SMSS $\langle r_6'' \text{ap} \rangle$ | 16.44 ± 0.05 | $\log M_{\text{H}\beta}/M_\odot$ | 8.26 ± 0.07 |
| 2MASS K_{ext} | 12.04 ± 0.08 | $\log M_{[\text{O III}]} / M_\odot$ | 8.29 ± 0.06 |



Emission Line Measurements

| Line | $\log L$ (erg s^{-1}) | FWHM (km s^{-1}) | σ (km s^{-1}) | EW (\AA) |
|-----------------------------------|------------------------------------|----------------------------------|----------------------------------|-------------------------------------|
| H γ Narrow | 39.58 ± 0.38 | 411 ± 63 | 354 ± 37 | 0.85 ± 0.77 |
| Hγ Broad | 40.83 ± 0.09 | 4622 ± 350 | 1742 ± 135 | 14.45 ± 1.67 |
| [O III] 4364 | 39.67 ± 0.28 | 374 ± 63 | 158 ± 25 | 1.05 ± 0.43 |
| He II Narrow | 39.38 ± 0.38 | 374 ± 63 | 158 ± 25 | 0.63 ± 0.44 |
| He II Broad | 40.25 ± 0.20 | 3161 ± 173 | 1342 ± 73 | 4.88 ± 1.29 |
| H β Narrow | 40.38 ± 0.07 | 411 ± 63 | 355 ± 37 | 6.90 ± 0.97 |
| Hβ Broad | 41.44 ± 0.02 | 6871 ± 466 | 2655 ± 97 | 79.23 ± 2.40 |
| [O III] 5007 | 41.22 ± 0.02 | 411 ± 63 | 355 ± 37 | 51.08 ± 1.07 |
| He I Narrow | 39.55 ± 0.21 | 374 ± 63 | 158 ± 25 | 1.52 ± 0.40 |
| He I Broad | 40.48 ± 0.08 | 3338 ± 222 | 1418 ± 94 | 13.17 ± 1.26 |
| [O I] 6300 | 40.19 ± 0.04 | 374 ± 63 | 158 ± 25 | 7.85 ± 0.46 |
| H α Narrow | 41.00 ± 0.01 | 374 ± 63 | 158 ± 25 | 55.11 ± 0.61 |
| Hα Broad | 42.02 ± 0.01 | 4293 ± 75 | 1843 ± 44 | 573.41 ± 2.86 |
| [N II] 6585 | 40.98 ± 0.01 | 374 ± 63 | 158 ± 25 | 52.35 ± 0.60 |
| [S II] 6718 | 40.63 ± 0.02 | 374 ± 63 | 158 ± 25 | 24.63 ± 0.57 |
| [S II] 6732 | 40.47 ± 0.02 | 374 ± 63 | 158 ± 25 | 17.23 ± 0.59 |

Emission Summary

| | |
|------------------------------|-------|
| H α broad SNR | 13.87 |
| H β broad SNR | 3.32 |
| H γ broad SNR | 1.38 |
| AGN frac | 0.36 |
| Host frac | 0.64 |
| $\log L_{5100, \text{Host}}$ | 43.46 |
| Fe II/H β | — |
| Fe II/[O III] | — |

Quality Flags

| | |
|------------------|-----|
| spurious_hab/hbb | 0/0 |
| 15100 | 1 |
| balmer | 0 |
| balmer_snr | 1 |
| hb_width | 0 |
| balmer_width | 0 |