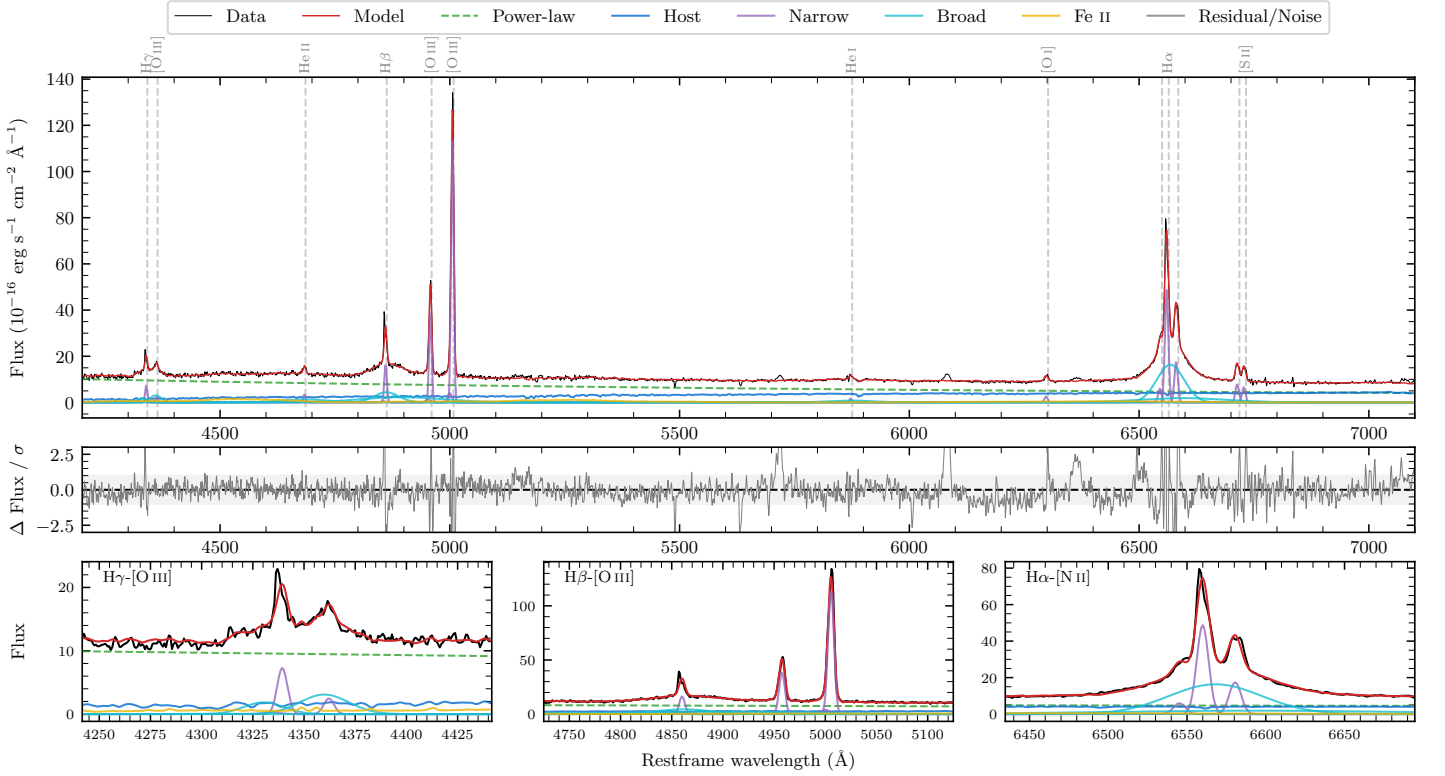
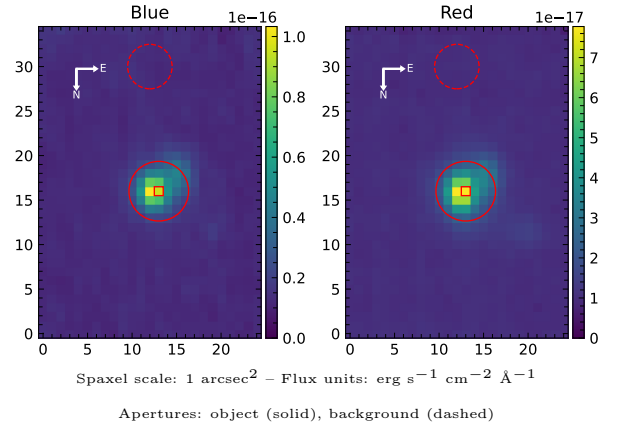


# [SSR2017] SDSS J2356–1016 Gal 1

Spectrum ID	8235915_sp1	Spectrum type	Sy 1.5
Alt name	g2356543–101605	Quality flag	good
$z$	0.0737	AGN reference	6dFGS
RA, Dec	359.2265, –10.2683	MW $E(B - V)$	0.027
MJD	60179.6	Power law $\alpha_\nu$	$-0.28 \pm 0.14$
SNR/Å B/R	12.1/17.5	$\log L_{5100, \text{AGN}}$	$43.70 \pm 0.02$
Obs airmass	1.16	$\log H\beta_{\text{Br}}/[\text{O III}]$	$-0.46 \pm 0.23$
SMSS ID	8235915	$\log M_{L5100}/M_\odot$	$7.96 \pm 0.03$
Neighbour	7.8", 8235923	$\log M_{\text{H}\alpha}/M_\odot$	$7.80 \pm 0.02$
SMSS $\langle r_{6'' \text{ap}} \rangle$	$16.15 \pm 0.06$	$\log M_{\text{H}\beta}/M_\odot$	$7.85 \pm 0.12$
2MASS $K_{\text{ext}}$	$12.24 \pm 0.06$	$\log M_{[\text{O III}]} / M_\odot$	$8.24 \pm 0.03$



## Emission Line Measurements

Line	$\log L$ (erg s <sup>-1</sup> )	FWHM (km s <sup>-1</sup> )	$\sigma$ (km s <sup>-1</sup> )	EW (Å)
H $\gamma$ Narrow	$40.84 \pm 0.05$	$415 \pm 62$	$196 \pm 25$	$5.43 \pm 0.36$
<b>H<math>\gamma</math> Broad</b>	<b><math>41.31 \pm 0.05</math></b>	<b><math>3389 \pm 464</math></b>	<b><math>1148 \pm 65</math></b>	<b><math>15.60 \pm 0.77</math></b>
[O III] 4364	$40.35 \pm 0.17$	$408 \pm 63$	$172 \pm 25$	$1.76 \pm 0.35$
He II Narrow	$40.52 \pm 0.07$	$408 \pm 63$	$172 \pm 25$	$2.95 \pm 0.29$
<b>He II Broad</b>	–	–	–	–
H $\beta$ Narrow	$41.24 \pm 0.02$	$415 \pm 62$	$196 \pm 25$	$16.44 \pm 0.43$
<b>H<math>\beta</math> Broad</b>	<b><math>41.64^{+0.44}_{-0.03}</math></b>	<b><math>3912 \pm 118</math></b>	<b><math>1459 \pm 48</math></b>	<b><math>40.81 \pm 1.05</math></b>
[O III] 5007	$42.10 \pm 0.01$	$415 \pm 62$	$196 \pm 25$	$125.43 \pm 0.55$
He I Narrow	$40.31 \pm 0.08$	$408 \pm 63$	$172 \pm 25$	$2.66 \pm 0.33$
<b>He I Broad</b>	<b><math>41.16 \pm 0.05</math></b>	<b><math>5814 \pm 189</math></b>	<b><math>2469 \pm 80</math></b>	<b><math>19.07 \pm 1.09</math></b>
[O I] 6300	$40.52 \pm 0.04$	$408 \pm 63$	$172 \pm 25$	$4.90 \pm 0.30$
H $\alpha$ Narrow	$41.82 \pm 0.01$	$408 \pm 63$	$172 \pm 25$	$105.83 \pm 0.56$
<b>H<math>\alpha</math> Broad</b>	<b><math>42.38 \pm 0.01</math></b>	<b><math>3400 \pm 71</math></b>	<b><math>1584 \pm 49</math></b>	<b><math>382.76 \pm 2.00</math></b>
[N II] 6585	$41.38 \pm 0.01$	$408 \pm 63$	$172 \pm 25$	$38.25 \pm 0.52$
[S II] 6718	$41.04 \pm 0.01$	$408 \pm 63$	$172 \pm 25$	$18.19 \pm 0.40$
[S II] 6732	$40.97 \pm 0.02$	$408 \pm 63$	$172 \pm 25$	$15.28 \pm 0.45$

## Emission Summary

H $\alpha$ broad SNR	19.10
H $\beta$ broad SNR	4.63
H $\gamma$ broad SNR	3.31
AGN frac	0.73
Host frac	0.27
$\log L_{5100, \text{Host}}$	43.26
Fe II/H $\beta$	–
Fe II/[O III]	–

## Quality Flags

spurious_hab/hbb	0/1
15100	0
balmer	0
balmer_snr	0
hb_width	0
balmer_width	0