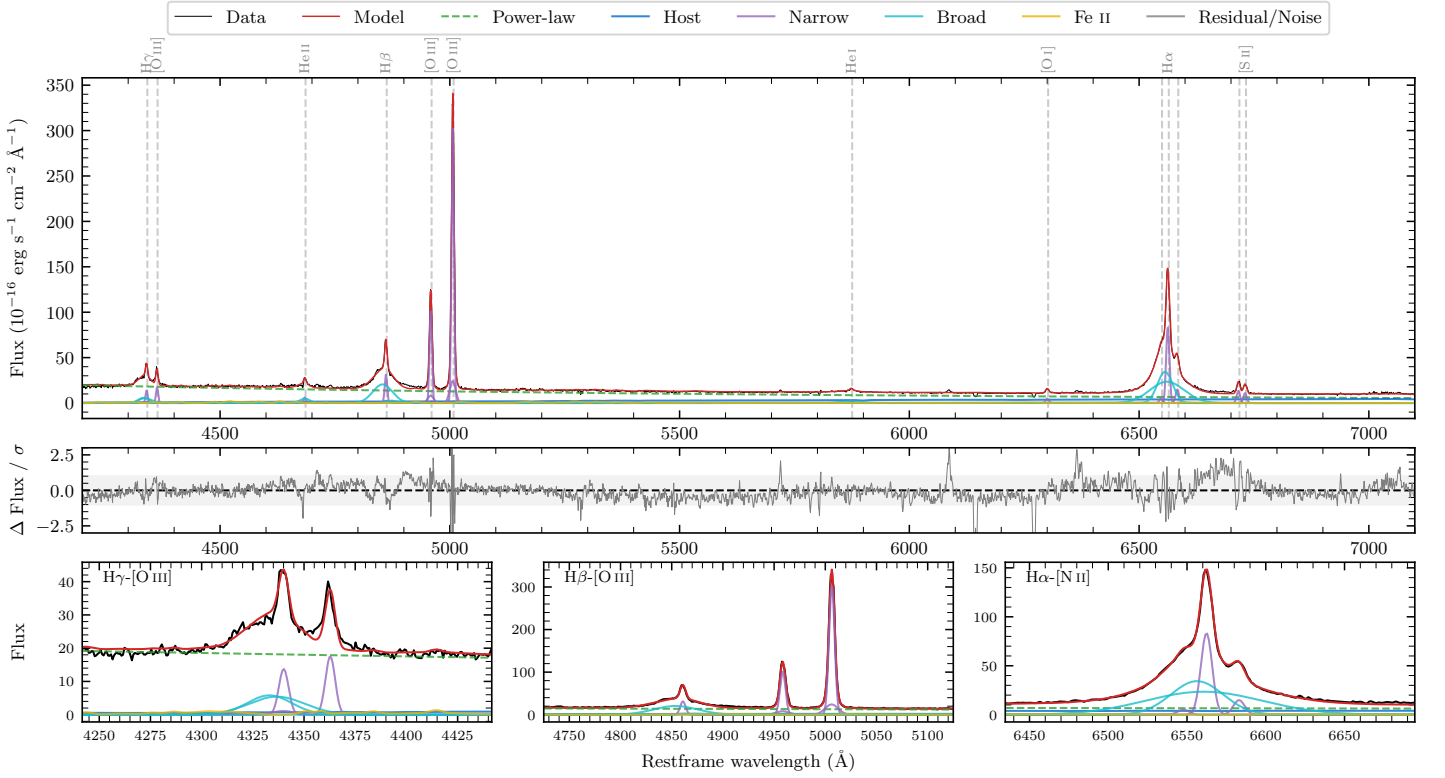
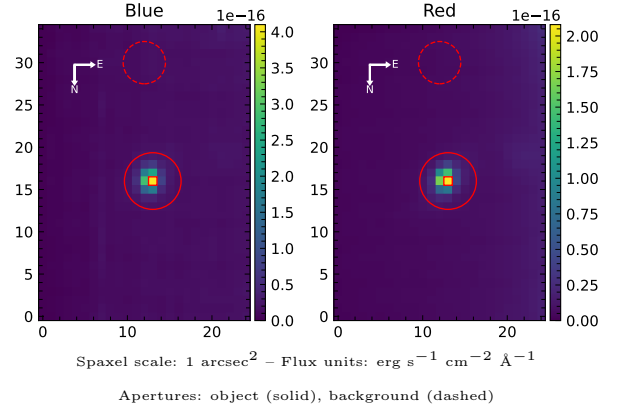


# 2MASS J09390877–2515496

Spectrum ID	81825882_sp1	Spectrum type	Sy 1.5
Alt name	g0939088–251550	Quality flag	good
$z$	0.0851	AGN reference	6dFGS
RA, Dec	144.7866, –25.2638	MW $E(B - V)$	0.061
MJD	60018.52	Power law $\alpha_\nu$	$0.45 \pm 0.04$
SNR/ $\text{\AA}$ B/R	6.7/9.7	$\log L_{5100, \text{AGN}}$	$44.05 \pm 0.01$
Obs airmass	1.01	$\log H\beta_{\text{Br}}/[\text{O III}]$	$-0.26 \pm 0.04$
SMSS ID	81825882	$\log M_{L5100}/M_\odot$	$7.95 \pm 0.17$
Neighbour	9.4", 1102548664	$\log M_{\text{H}\alpha}/M_\odot$	$7.78 \pm 0.05$
SMSS $\langle r_6'' \text{ap} \rangle$	$16.19 \pm 0.06$	$\log M_{\text{H}\beta}/M_\odot$	$8.04 \pm 0.17$
2MASS $K_{\text{ext}}$	nan $\pm$ nan	$\log M_{[\text{O III}]} / M_\odot$	$8.36 \pm 0.18$



## Emission Line Measurements

Line	$\log L$ ( $\text{erg s}^{-1}$ )	FWHM ( $\text{km s}^{-1}$ )	$\sigma$ ( $\text{km s}^{-1}$ )	EW ( $\text{\AA}$ )
H $\gamma$ Narrow	$41.29 \pm 0.09$	$402 \pm 63$	$217 \pm 41$	$5.78 \pm 0.67$
<b>H<math>\gamma</math> Broad</b>	<b><math>41.86 \pm 0.07</math></b>	<b><math>2196 \pm 409</math></b>	<b><math>712 \pm 148</math></b>	<b><math>20.50 \pm 1.09</math></b>
[O III] 4364	$41.31 \pm 0.07$	$384 \pm 63$	$163 \pm 25$	$6.32 \pm 0.47$
He II Narrow	$40.88 \pm 0.16$	$384 \pm 63$	$163 \pm 25$	$2.80 \pm 0.48$
<b>He II Broad</b>	<b><math>41.49 \pm 0.20</math></b>	<b><math>1618 \pm 592</math></b>	<b><math>687 \pm 251</math></b>	<b><math>9.98 \pm 0.99</math></b>
H $\beta$ Narrow	$41.68 \pm 0.07$	$402 \pm 63$	$217 \pm 41$	$19.53 \pm 0.81$
<b>H<math>\beta</math> Broad</b>	<b><math>42.42 \pm 0.04</math></b>	<b><math>3233 \pm 587</math></b>	<b><math>1135 \pm 261</math></b>	<b><math>92.49 \pm 1.54</math></b>
[O III] 5007	$42.68 \pm 0.01$	$402 \pm 63$	$217 \pm 41$	$208.01 \pm 1.01$
He I Narrow	$40.59 \pm 0.17$	$384 \pm 63$	$163 \pm 25$	$2.46 \pm 0.40$
<b>He I Broad</b>	<b><math>41.32 \pm 0.10</math></b>	<b><math>2928 \pm 734</math></b>	<b><math>1243 \pm 312</math></b>	<b><math>14.14 \pm 1.08</math></b>
[O I] 6300	$40.92 \pm 0.06$	$384 \pm 63$	$163 \pm 25$	$6.31 \pm 0.45$
H $\alpha$ Narrow	$42.17 \pm 0.01$	$384 \pm 63$	$163 \pm 25$	$123.05 \pm 0.83$
<b>H<math>\alpha</math> Broad</b>	<b><math>42.85 \pm 0.02</math></b>	<b><math>2396 \pm 86</math></b>	<b><math>1089 \pm 173</math></b>	<b><math>594.12 \pm 2.09</math></b>
[N II] 6585	$41.42 \pm 0.05$	$384 \pm 63$	$163 \pm 25$	$22.24 \pm 0.67$
[S II] 6718	$41.38 \pm 0.03$	$384 \pm 63$	$163 \pm 25$	$21.30 \pm 0.73$
[S II] 6732	$41.29 \pm 0.03$	$384 \pm 63$	$163 \pm 25$	$17.56 \pm 0.71$

## Emission Summary

H $\alpha$ broad SNR	23.16
H $\beta$ broad SNR	9.17
H $\gamma$ broad SNR	4.37
AGN frac	0.87
Host frac	0.13
$\log L_{5100, \text{Host}}$	43.22
Fe II/H $\beta$	0.24
Fe II/[O III]	0.11

## Quality Flags

spurious_hab/hbb	0/0
15100	2
balmer	0
balmer_snr	0
hb_width	0
balmer_width	0