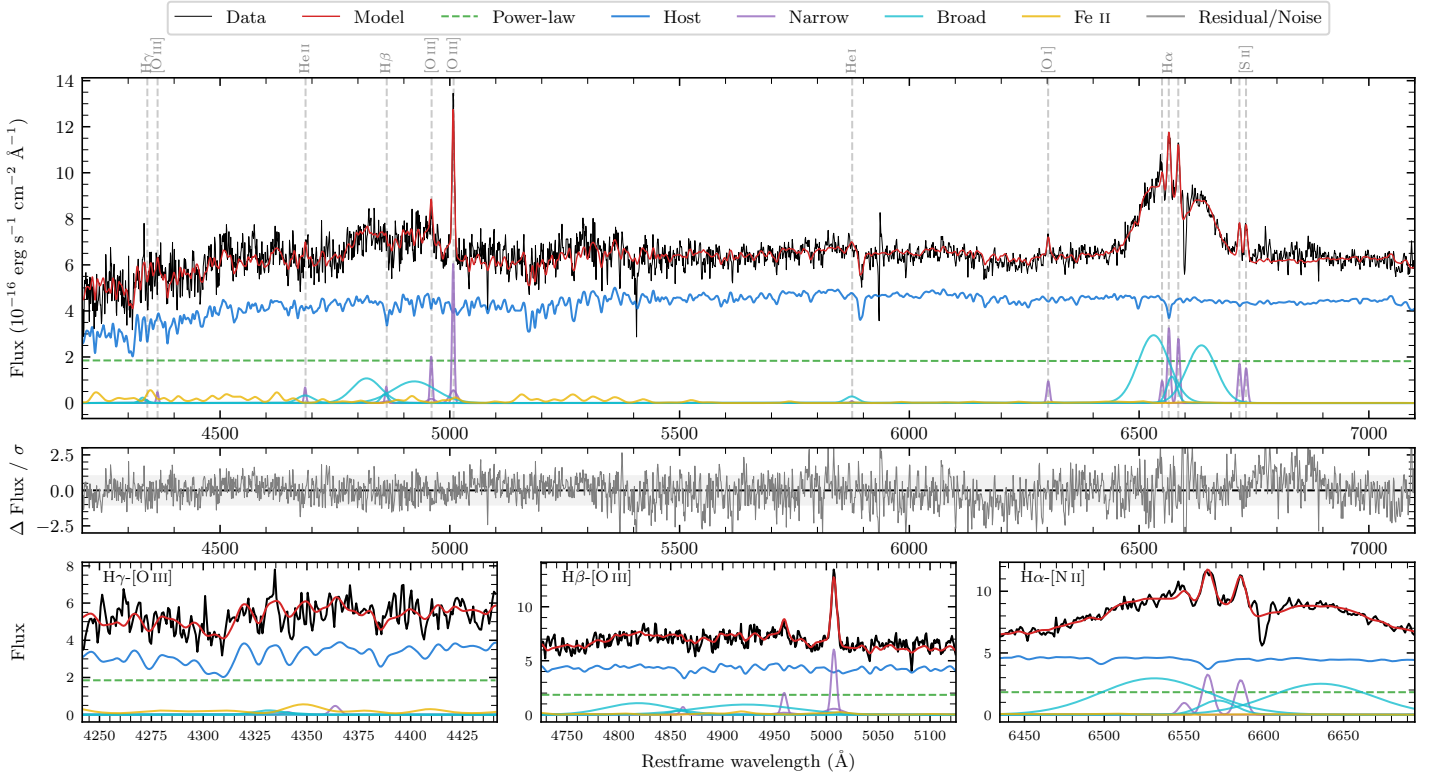
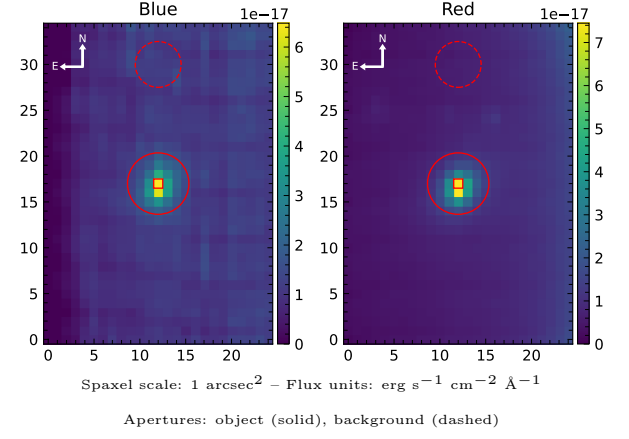


6dFGS gJ100202.9–302117

Spectrum ID	81663691_sp1	Spectrum type	Sy 1.2
Alt name	g1002029–302117	Quality flag	good
z	0.0617	AGN reference	6dFGS
RA, Dec	150.5122, –30.3547	MW $E(B - V)$	0.068
MJD	60018.51	Power law α_ν	-1.97 ± 0.03
SNR/ \AA B/R	9.5/24.5	$\log L_{5100, \text{AGN}}$	42.94 ± 0.03
Obs airmass	1.00	$\log H\beta_{\text{Br}}/[\text{O III}]$	0.61 ± 0.05
SMSS ID	81663691	$\log M_{L5100}/M_\odot$	8.52 ± 0.07
Neighbour	5.2", 2135723245	$\log M_{\text{H}\alpha}/M_\odot$	8.11 ± 0.02
SMSS $\langle r_{6''}^{\text{ap}} \rangle$	16.64 ± 0.05	$\log M_{\text{H}\beta}/M_\odot$	8.58 ± 0.07
2MASS K_{ext}	12.74 ± 0.11	$\log M_{[\text{O III}]} / M_\odot$	8.43 ± 0.08



Emission Line Measurements

Line	$\log L$ (erg s ⁻¹)	FWHM (km s ⁻¹)	σ (km s ⁻¹)	EW (Å)
H γ Narrow	–	–	–	–
Hγ Broad	–	–	–	–
[O III] 4364	39.40 ± 0.39	354 ± 63	149 ± 25	1.49 ± 1.02
He II Narrow	39.59 ± 0.31	354 ± 63	149 ± 25	2.28 ± 0.93
He II Broad	40.13 ± 0.24	2535 ± 63	1077 ± 25	8.04 ± 2.43
H β Narrow	39.75 ± 0.27	374 ± 64	273 ± 53	3.27 ± 1.55
Hβ Broad	41.30 ± 0.03	10821 ± 784	3719 ± 55	116.53 ± 4.11
[O III] 5007	40.68 ± 0.04	374 ± 64	273 ± 53	28.48 ± 1.61
He I Narrow	–	–	–	–
He I Broad	39.99 ± 0.13	1675 ± 63	711 ± 25	5.79 ± 0.92
[O I] 6300	39.86 ± 0.07	354 ± 63	149 ± 25	4.36 ± 0.40
H α Narrow	40.42 ± 0.03	354 ± 63	149 ± 25	15.56 ± 0.45
Hα Broad	41.67 ± 0.01	7996 ± 102	2599 ± 26	281.17 ± 1.68
[N II] 6585	40.35 ± 0.03	354 ± 63	149 ± 25	13.46 ± 0.45
[S II] 6718	40.14 ± 0.04	354 ± 63	149 ± 25	8.30 ± 0.43
[S II] 6732	40.10 ± 0.04	354 ± 63	149 ± 25	7.44 ± 0.43

Emission Summary

H α broad SNR	4.97
H β broad SNR	2.14
H γ broad SNR	0.79
AGN frac	0.31
Host frac	0.69
$\log L_{5100, \text{Host}}$	43.28
Fe II/H β	0.36
Fe II/[O III]	1.47

Quality Flags

spurious_hab/hbb	0/0
15100	1
balmer	1
balmer_snr	2
hb_width	0
balmer_width	0