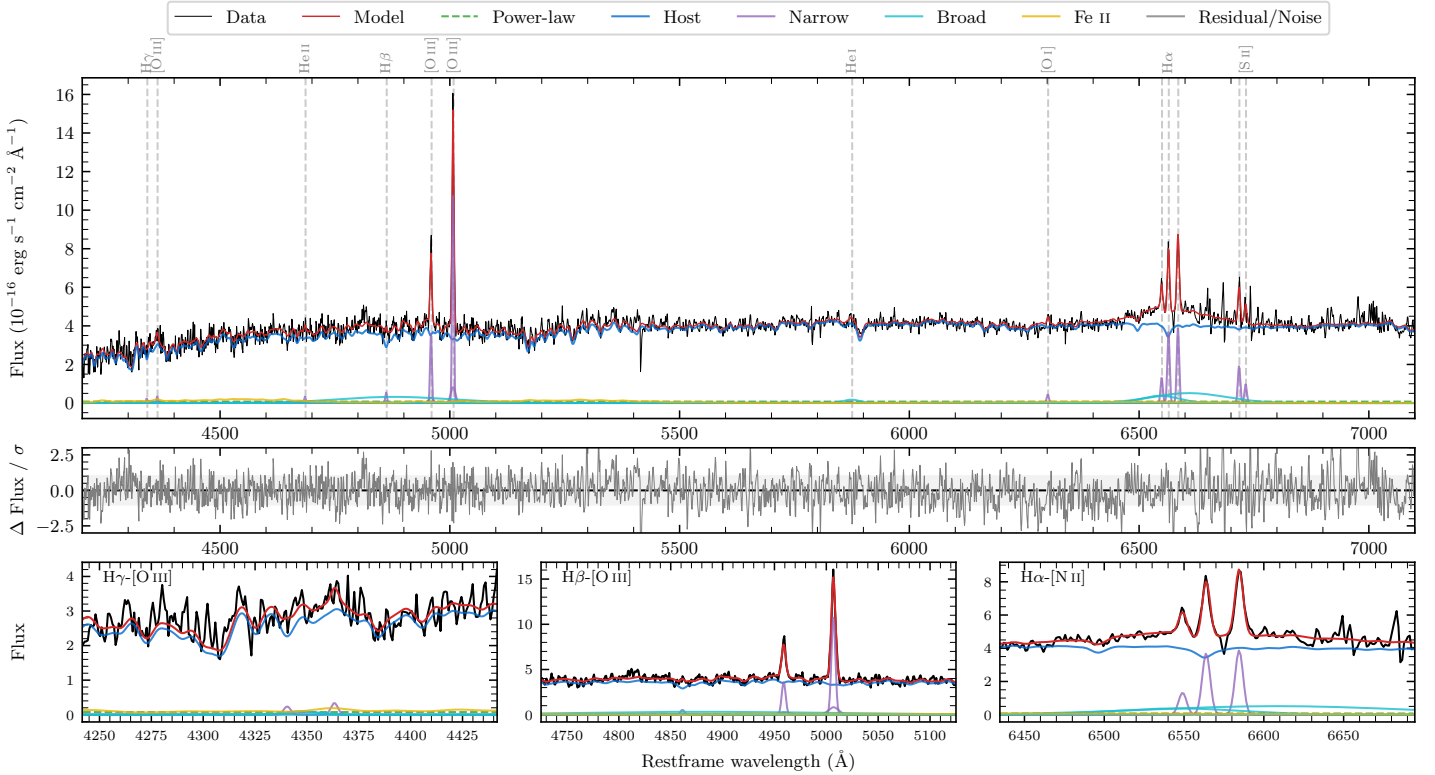
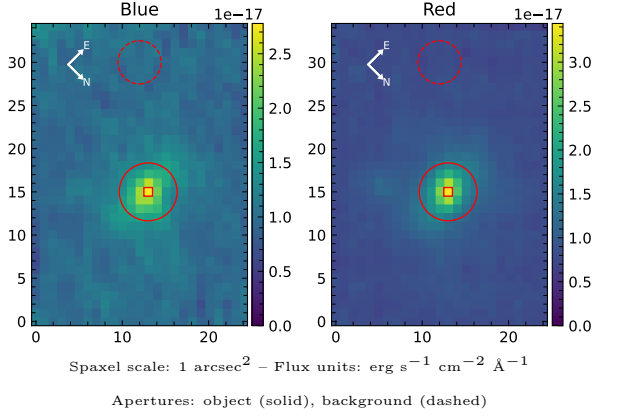


# LEDA 1023398

Spectrum ID	8033344_sp1	Spectrum type	Sy 1.5+
Alt name	g2330048-071013	Quality flag	good
$z$	0.0887	AGN reference	6dFGS
RA, Dec	352.5199, -7.1703	MW $E(B-V)$	0.026
MJD	60171.66	Power law $\alpha_\nu$	$-1.93 \pm 0.08$
SNR/ $\text{\AA}$ B/R	10.8/18.5	$\log L_{5100, \text{AGN}}$	$41.88 \pm 0.56$
Obs airmass	1.10	$\log H\beta_{\text{Br}}/[\text{O III}]$	$< -0.47$
SMSS ID	8033344	$\log M_{L5100}/M_\odot$	—
Neighbour	None $< 15''$	$\log M_{\text{H}\alpha}/M_\odot$	$7.97 \pm 0.05$
SMSS $\langle r_6''_{\text{ap}} \rangle$	$16.92 \pm 0.07$	$\log M_{\text{H}\beta}/M_\odot$	—
2MASS $K_{\text{ext}}$	$12.49 \pm 0.13$	$\log M_{[\text{O III}]} / M_\odot$	—



## Emission Line Measurements

Line	$\log L$ ( $\text{erg s}^{-1}$ )	FWHM ( $\text{km s}^{-1}$ )	$\sigma$ ( $\text{km s}^{-1}$ )	EW ( $\text{\AA}$ )
H $\gamma$ Narrow	$39.41 \pm 0.39$	$284 \pm 63$	$159 \pm 27$	$17.16 \pm 15.75$
<b>H<math>\gamma</math> Broad</b>	—	—	—	—
[O III] 4364	$39.49 \pm 0.32$	$272 \pm 62$	$115 \pm 25$	$20.56 \pm 10.63$
He II Narrow	$39.51 \pm 0.30$	$272 \pm 62$	$115 \pm 25$	$21.59 \pm 9.49$
<b>He II Broad</b>	—	—	—	—
H $\beta$ Narrow	$39.81 \pm 0.20$	$284 \pm 63$	$159 \pm 27$	$43.84 \pm 15.31$
<b>H<math>\beta</math> Broad</b>	$< 40.66$	—	—	—
[O III] 5007	$41.12 \pm 0.02$	$284 \pm 63$	$159 \pm 27$	$899.69 \pm 17.56$
He I Narrow	—	—	—	—
<b>He I Broad</b>	<b><math>40.22 \pm 0.15</math></b>	<b><math>2127 \pm 62</math></b>	<b><math>903 \pm 25</math></b>	<b><math>113.83 \pm 21.23</math></b>
[O I] 6300	$39.76 \pm 0.15$	$272 \pm 62$	$115 \pm 25$	$39.54 \pm 8.77$
H $\alpha$ Narrow	$40.70 \pm 0.02$	$272 \pm 62$	$115 \pm 25$	$345.04 \pm 8.24$
<b>H<math>\alpha</math> Broad</b>	<b><math>41.48 \pm 0.02</math></b>	<b><math>7754 \pm 373</math></b>	<b><math>2913 \pm 35</math></b>	<b><math>2096.59 \pm 51.41</math></b>
[N II] 6585	$40.72 \pm 0.02$	$272 \pm 62$	$115 \pm 25$	$363.17 \pm 8.80$
[S II] 6718	$40.42 \pm 0.04$	$272 \pm 62$	$115 \pm 25$	$183.37 \pm 10.56$
[S II] 6732	$40.13 \pm 0.08$	$272 \pm 62$	$115 \pm 25$	$93.63 \pm 10.24$

## Emission Summary

H $\alpha$ broad SNR	2.26
H $\beta$ broad SNR	0.00
H $\gamma$ broad SNR	0.00
AGN frac	0.02
Host frac	0.98
$\log L_{5100, \text{Host}}$	43.54
Fe II/H $\beta$	—
Fe II/[O III]	—

## Quality Flags

spurious_hab/hbb	0/1
15100	2
balmer	2
balmer_snr	2
hb_width	2
balmer_width	2