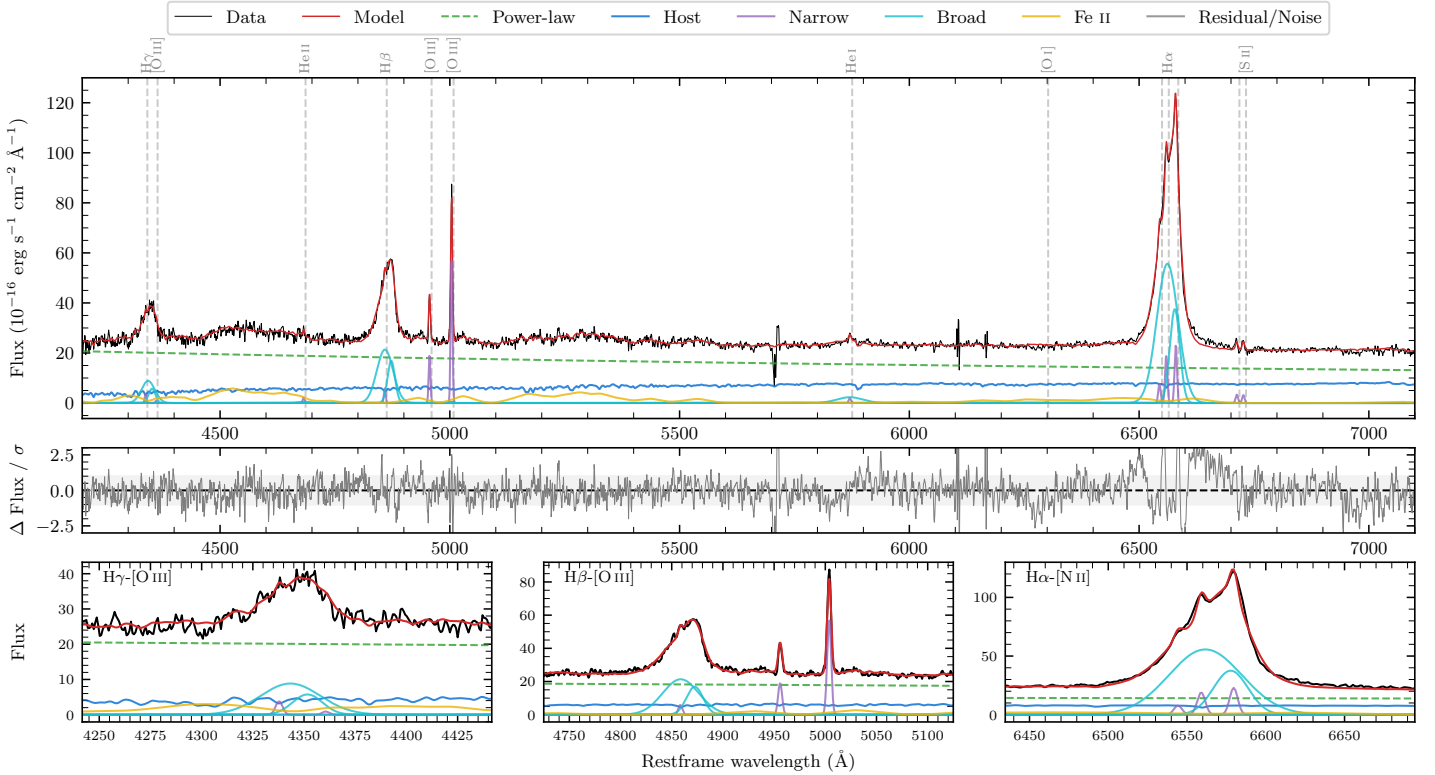
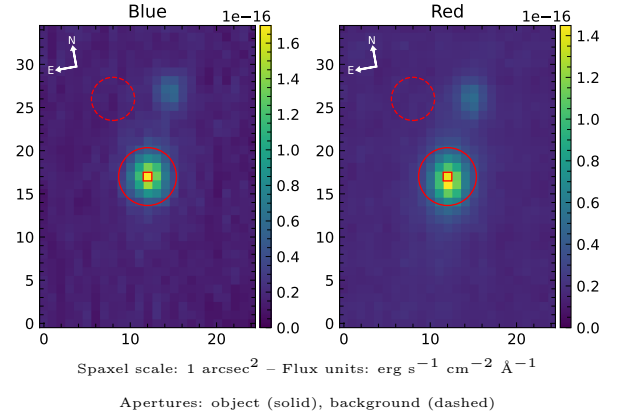


LEDA 3081667

Spectrum ID	80229823_sp1	Spectrum type	Sy 1.2
Alt name	g0954025-341343	Quality flag	good
z	0.0314	AGN reference	6dFGS
RA, Dec	148.5106, -34.2285	MW $E(B - V)$	0.086
MJD	60078.37	Power law α_ν	-1.13 ± 0.10
SNR/ \AA B/R	15.6/23.9	$\log L_{5100, \text{AGN}}$	43.33 ± 0.02
Obs airmass	1.00	$\log H\beta_{\text{Br}}/[\text{O III}]$	0.66 ± 0.01
SMSS ID	80229823	$\log M_{L5100}/M_\odot$	7.31 ± 0.03
Neighbour	9.8", 80229822	$\log M_{\text{H}\alpha}/M_\odot$	7.19 ± 0.03
SMSS $\langle r_6''_{\text{ap}} \rangle$	15.24 ± 0.05	$\log M_{\text{H}\beta}/M_\odot$	7.30 ± 0.03
2MASS K_{ext}	11.90 ± 0.07	$\log M_{[\text{O III}]} / M_\odot$	7.13 ± 0.04



Emission Line Measurements

Line	$\log L$ (erg s^{-1})	FWHM (km s^{-1})	σ (km s^{-1})	EW (\AA)
H γ Narrow	39.61 ± 0.21	279 ± 63	118 ± 25	0.85 ± 0.23
Hγ Broad	41.02 ± 0.03	1968 ± 166	780 ± 28	21.97 ± 0.65
[O III] 4364	—	—	—	—
He II Narrow	39.41 ± 0.24	278 ± 63	117 ± 25	0.58 ± 0.18
He II Broad	39.58 ± 0.37	1776 ± 68	754 ± 27	0.85 ± 0.46
H β Narrow	39.85 ± 0.10	279 ± 63	118 ± 25	1.61 ± 0.19
Hβ Broad	41.50 ± 0.01	2219 ± 57	902 ± 25	73.19 ± 0.66
[O III] 5007	40.85 ± 0.01	279 ± 63	118 ± 25	16.53 ± 0.23
He I Narrow	39.47 ± 0.14	278 ± 63	117 ± 25	0.79 ± 0.15
He I Broad	40.61 ± 0.04	3358 ± 73	1426 ± 30	10.85 ± 0.58
[O I] 6300	—	—	—	—
H α Narrow	40.48 ± 0.03	278 ± 63	117 ± 25	9.01 ± 0.25
Hα Broad	42.02 ± 0.01	2169 ± 64	860 ± 25	313.46 ± 0.64
[N II] 6585	40.56 ± 0.02	278 ± 63	117 ± 25	10.89 ± 0.27
[S II] 6718	39.74 ± 0.08	278 ± 63	117 ± 25	1.66 ± 0.18
[S II] 6732	39.72 ± 0.09	278 ± 63	117 ± 25	1.59 ± 0.18

Emission Summary

H α broad SNR	48.46
H β broad SNR	19.45
H γ broad SNR	7.90
AGN frac	0.74
Host frac	0.26
$\log L_{5100, \text{Host}}$	42.87
Fe II/H β	0.87
Fe II/[O III]	3.94

Quality Flags

spurious_hab/hbb	0/0
15100	0
balmer	0
balmer_snr	0
hb_width	0
balmer_width	0