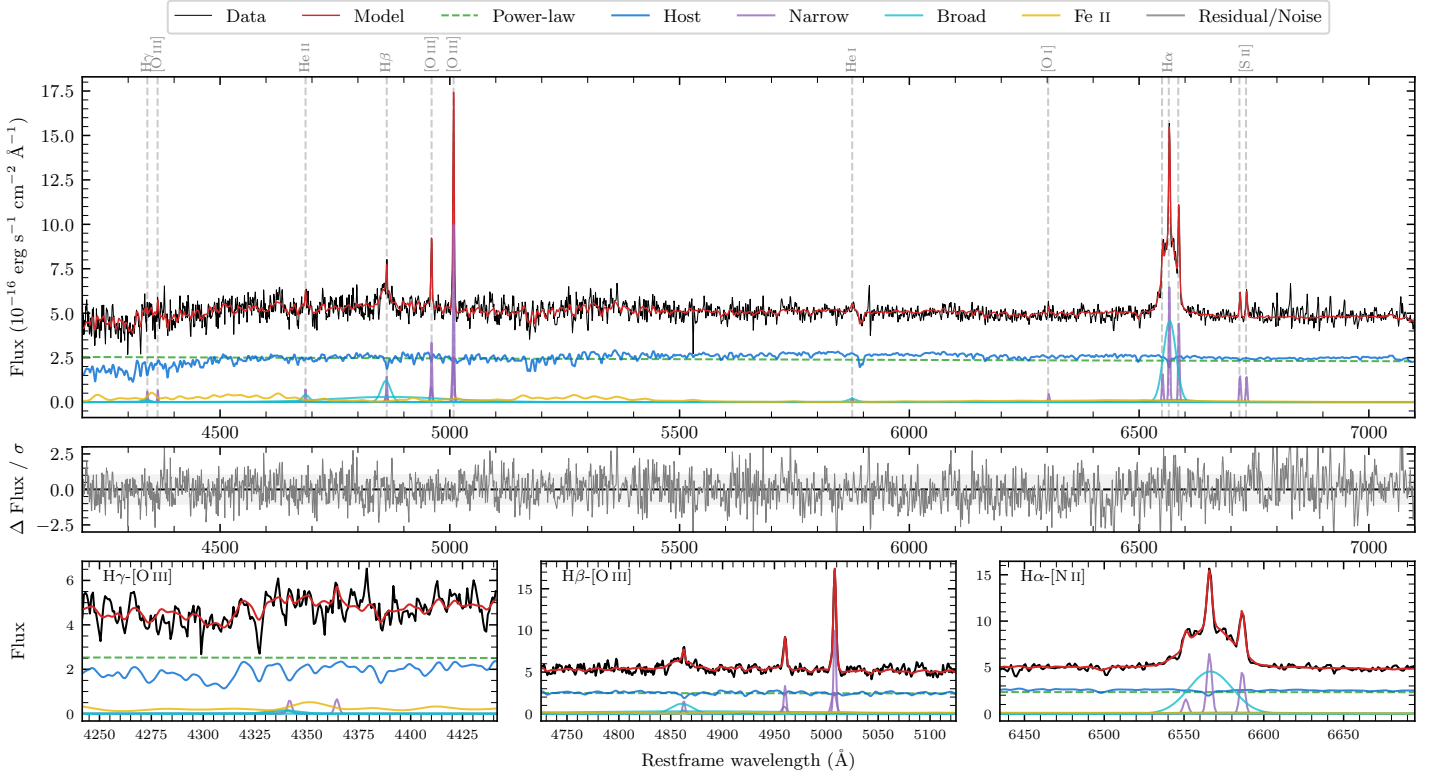
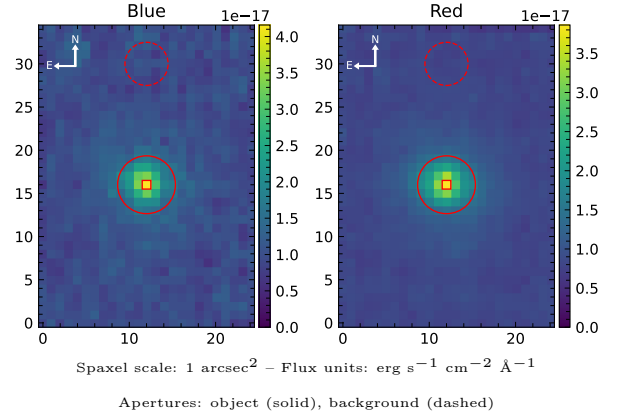


LEDA 195163

Spectrum ID	7928423_sp1	Spectrum type	Sy 1.5
Alt name	g2312169-101410	Quality flag	good
z	0.0657	AGN reference	6dFGS
RA, Dec	348.0702, -10.2362	MW $E(B - V)$	0.032
MJD	60171.64	Power law α_ν	-1.81 ± 0.05
SNR/ \AA B/R	12.3/20.7	$\log L_{5100, \text{AGN}}$	43.11 ± 0.02
Obs airmass	1.07	$\log H\beta_{\text{Br}}/[\text{O III}]$	-0.15 ± 0.32
SMSS ID	7928423	$\log M_{L5100}/M_\odot$	6.87 ± 0.03
Neighbour	None $< 15''$	$\log M_{H\alpha}/M_\odot$	6.40 ± 0.05
SMSS $\langle r_6''_{\text{ap}} \rangle$	nan \pm nan	$\log M_{H\beta}/M_\odot$	6.52 ± 0.17
2MASS K_{ext}	12.98 ± 0.10	$\log M_{[\text{O III}]} / M_\odot$	6.71 ± 0.04



Emission Line Measurements

Line	$\log L$ (erg s ⁻¹)	FWHM (km s ⁻¹)	σ (km s ⁻¹)	EW (Å)
H γ Narrow	39.42 ± 0.24	187 ± 63	100 ± 26	0.99 ± 0.40
Hγ Broad	—	—	—	—
[O III] 4364	39.28 ± 0.27	173 ± 63	70 ± 25	0.72 ± 0.31
He II Narrow	39.34 ± 0.25	173 ± 63	70 ± 25	0.85 ± 0.28
He II Broad	—	—	—	—
H β Narrow	39.87 ± 0.09	187 ± 63	100 ± 26	2.85 ± 0.38
Hβ Broad	$40.54^{+0.59}_{-0.05}$	1499 ± 28	547 ± 25	13.38 ± 0.86
[O III] 5007	40.69 ± 0.02	187 ± 63	100 ± 26	19.17 ± 0.42
He I Narrow	38.98 ± 0.36	173 ± 63	70 ± 25	0.38 ± 0.24
He I Broad	39.70 ± 0.21	1182 ± 63	502 ± 25	1.97 ± 0.59
[O I] 6300	39.28 ± 0.15	173 ± 63	70 ± 25	0.77 ± 0.17
H α Narrow	40.45 ± 0.02	173 ± 63	70 ± 25	11.45 ± 0.24
Hα Broad	41.27 ± 0.01	1482 ± 65	583 ± 53	76.59 ± 1.04
[N II] 6585	40.30 ± 0.02	173 ± 63	70 ± 25	8.14 ± 0.22
[S II] 6718	39.82 ± 0.05	173 ± 63	70 ± 25	2.71 ± 0.20
[S II] 6732	39.80 ± 0.06	173 ± 63	70 ± 25	2.59 ± 0.21

Emission Summary

H α broad SNR	11.50
H β broad SNR	2.94
H γ broad SNR	0.81
AGN frac	0.52
Host frac	0.49
$\log L_{5100, \text{Host}}$	43.09
Fe II/H β	—
Fe II/[O III]	—

Quality Flags

spurious_hab/hbb	0/1
15100	0
balmer	1
balmer_snr	2
hb_width	0
balmer_width	0